



# 2021 Montana Youth Risk Behavior Survey

## Regional Data Graphs

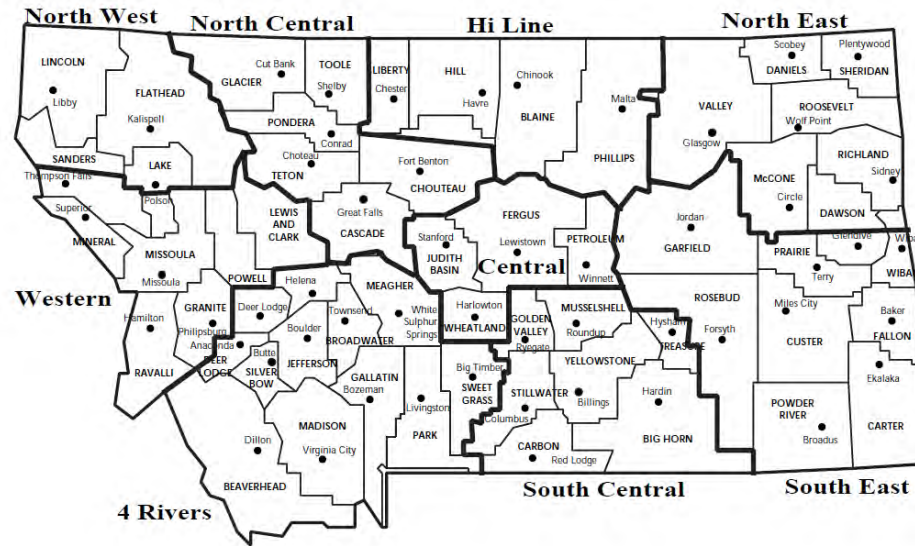


Youth Risk Behavior Survey  
Montana Office of Public Instruction  
Coordinated School Health Unit  
July 2021





## Montana Association of School Superintendents



Topic	Page
Unintentional Injuries and Violence .....	3
Tobacco Use .....	9
Alcohol and Other Drug Use.....	12
Sexual Behaviors .....	17
Nutrition and Dietary Behaviors .....	19
Physical Activity.....	23
Other Health-Related Behaviors.....	24

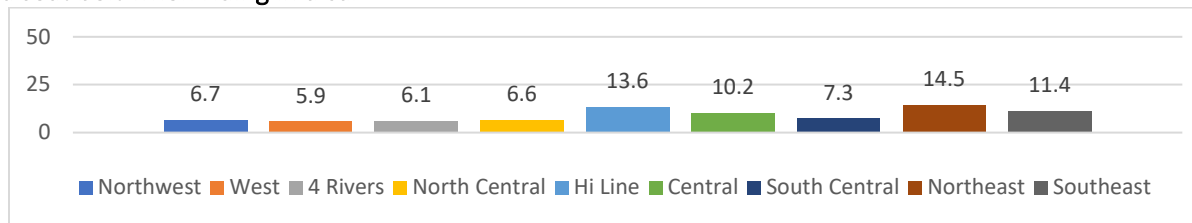
[www.opi.mt.gov/yrbs](http://www.opi.mt.gov/yrbs)



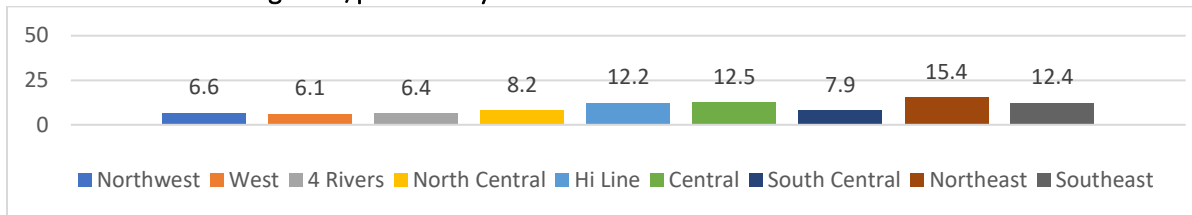
# 2021 Montana Youth Risk Behavior Survey

## MASS Regional Data – Percentage of High School Students

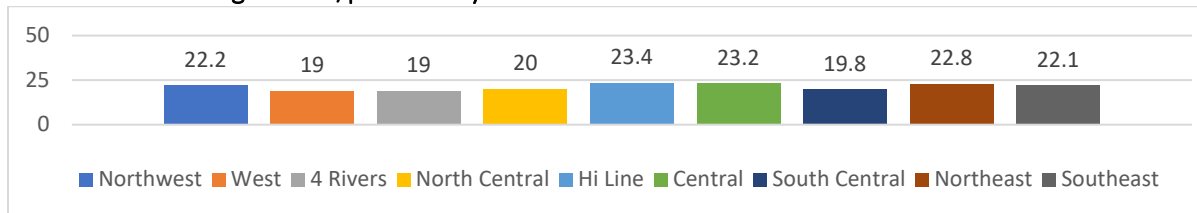
Rarely or never wore a seat belt when riding in a car



Rarely or never wore a seat belt when driving a car/past 30 days

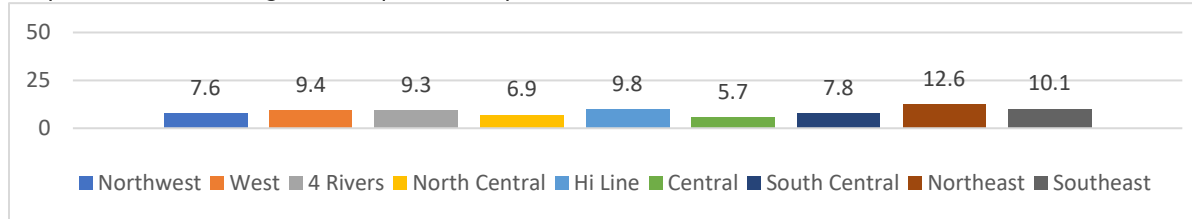


Rode with a driver who had been drinking alcohol/past 30 days

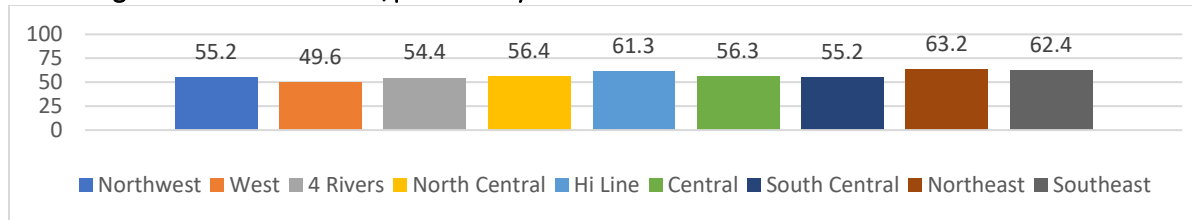




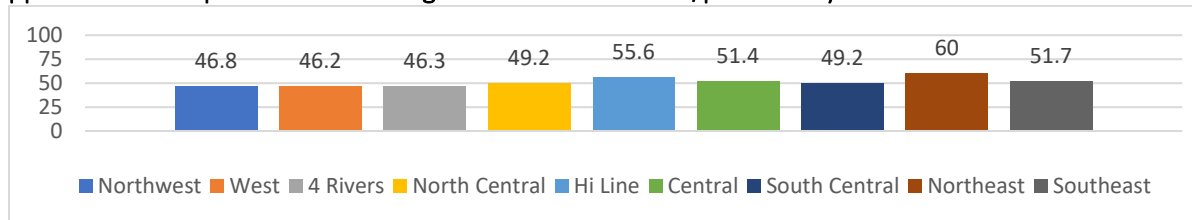
**Drove a vehicle when they had been drinking alcohol/past 30 days**



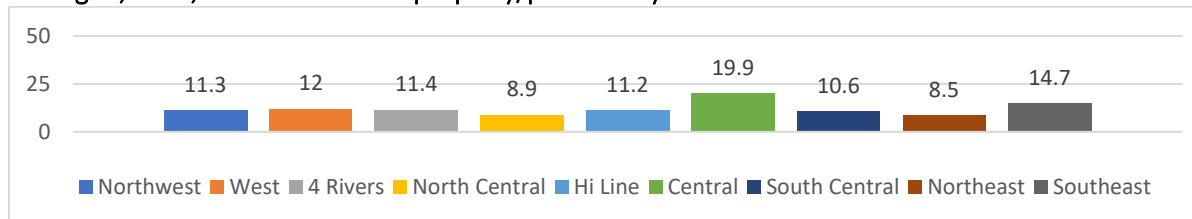
**Texted or e-mailed while driving a car or other vehicle/past 30 days**



**Used the Internet or apps on their cell phone while driving a car or other vehicle/past 30 days**

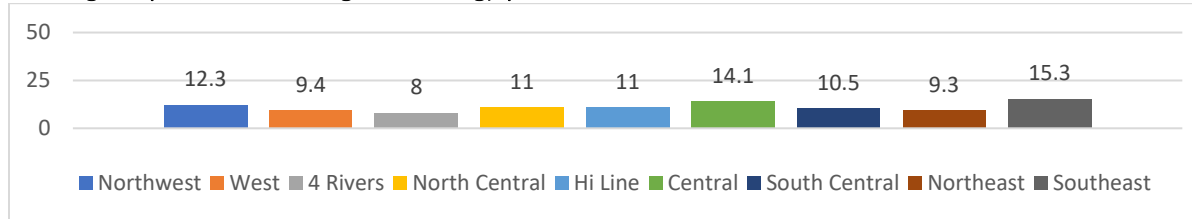


**Carried a weapon such as a gun, knife, or club on school property/past 30 days**

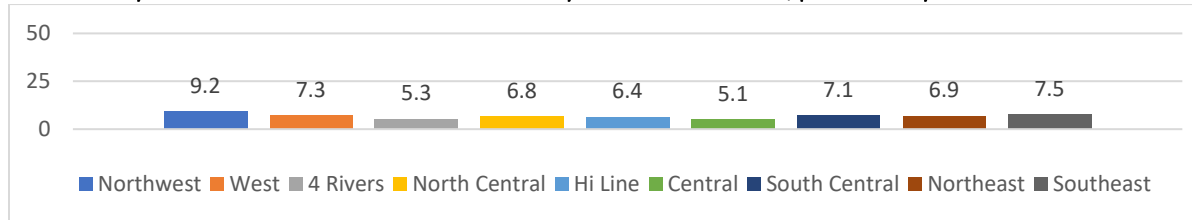




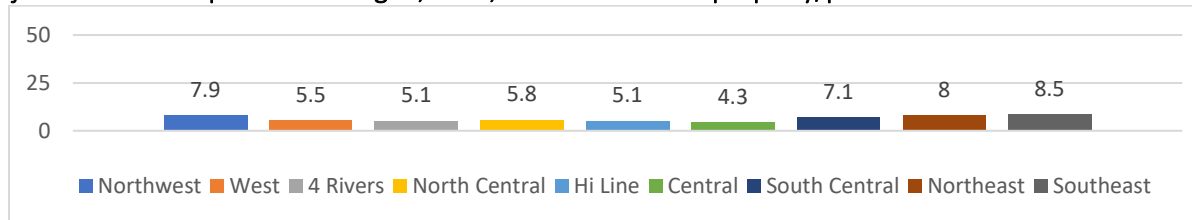
Carried a gun (not for hunting or sport, such as target shooting)/past 12 months



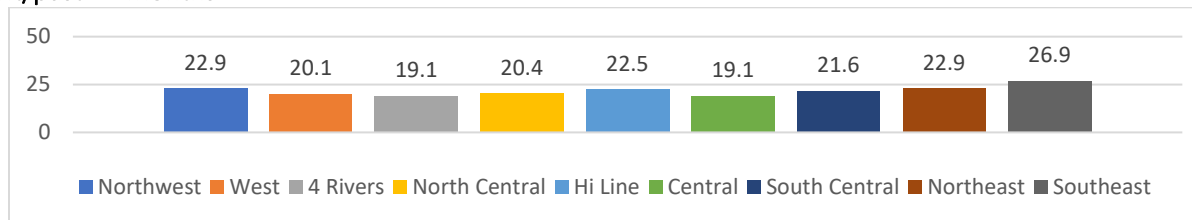
Did not go to school because they felt unsafe at school or on their way to or from school/past 30 days



Were threatened or injured with a weapon such as a gun, knife, or club on school property/past 12 months

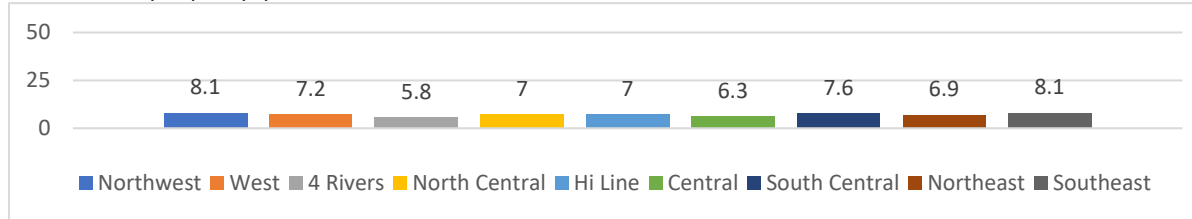


Were in a physical fight/past 12 months

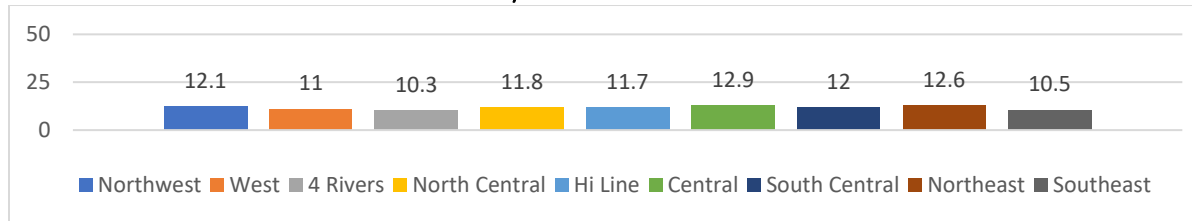




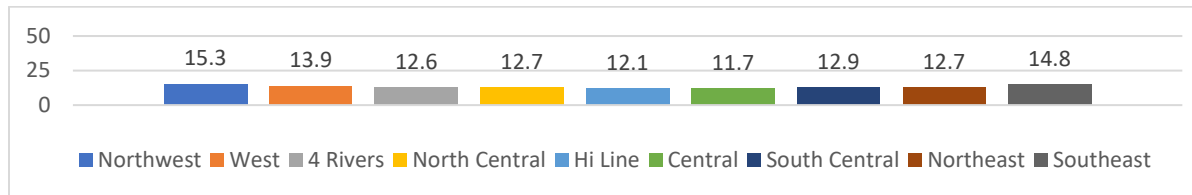
Were in a physical fight on school property/past 12 months



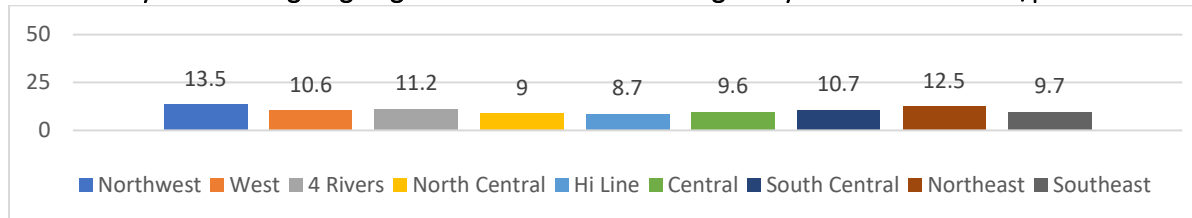
Were ever physically forced to have sexual intercourse when they did not want to



Had been forced to do sexual things they did not want to do (such as kissing, touching, or being physically forced to have sexual intercourse)/past 12 months

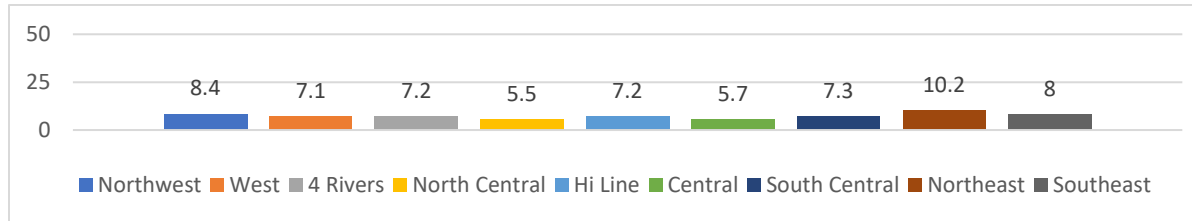


Had been forced by someone they were dating or going out with to do sexual things they did not want to do/past 12 months

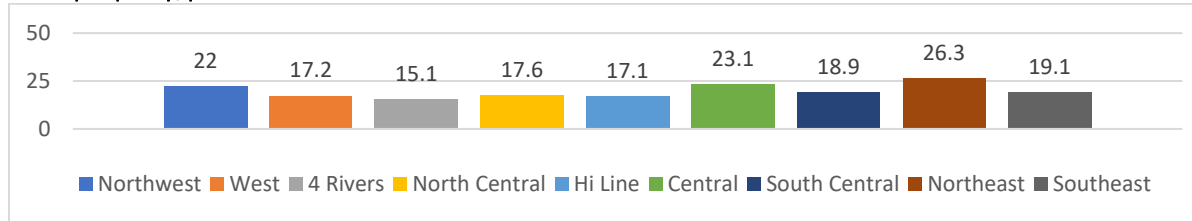




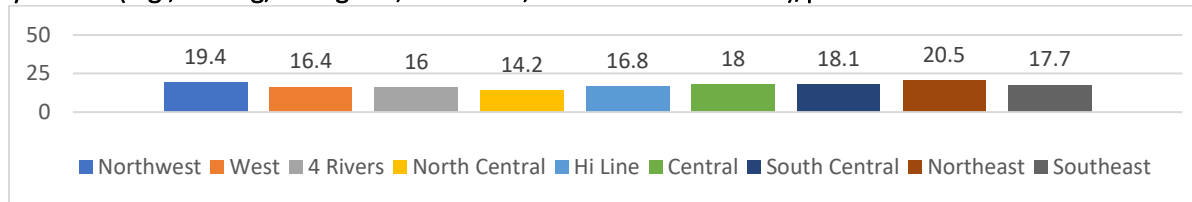
Had been physically hurt on purpose by someone they were dating or going out with (e.g., slammed into something, or injured with an object or weapon)/past 12 months



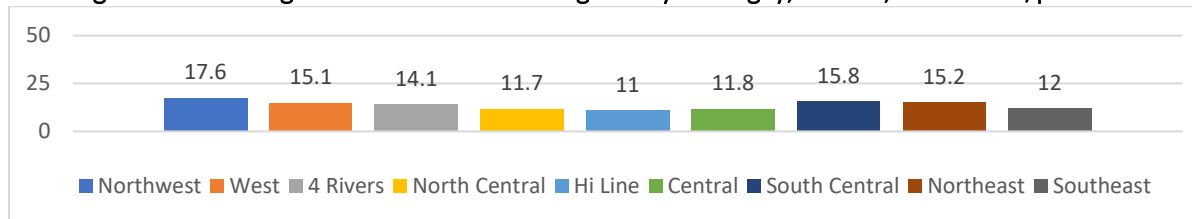
Had been bullied on school property/past 12 months



Had been electronically bullied (e.g., texting, Instagram, Facebook, or other social media)/past 12 months

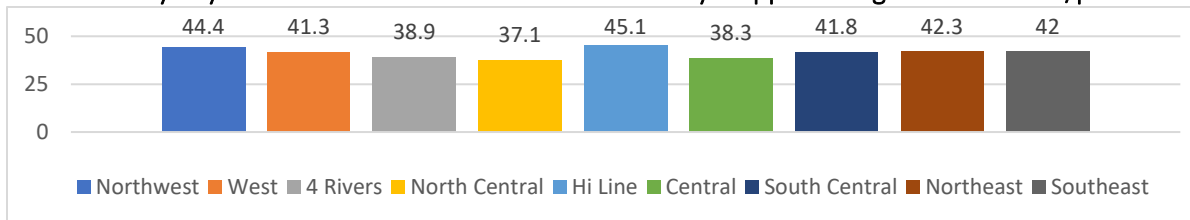


Had been the victim of teasing or name calling because someone thought they were gay, lesbian, or bisexual/past 12 months

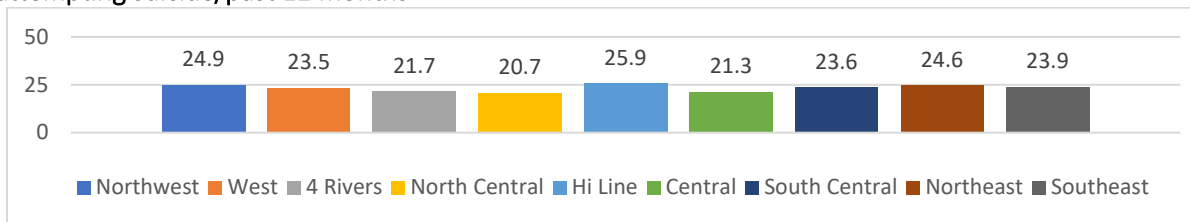




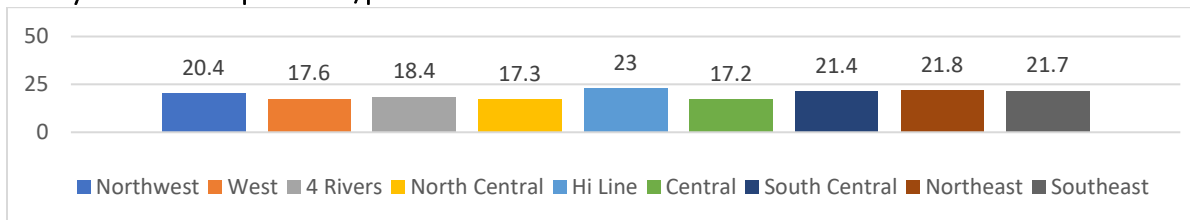
Felt so sad or hopeless almost every day for two weeks or more in a row that they stopped doing usual activities/past 12 months



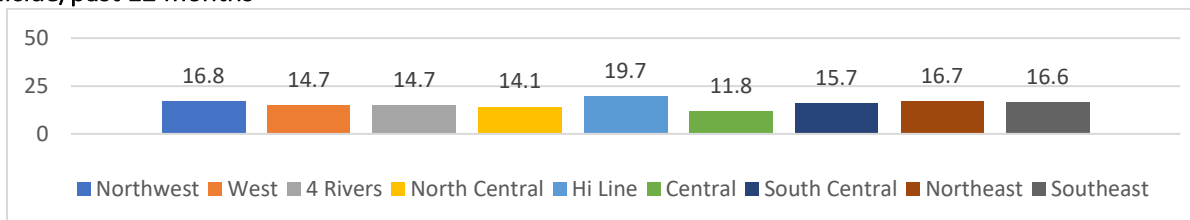
Seriously considered attempting suicide/past 12 months



Made a plan about how they would attempt suicide/past 12 months



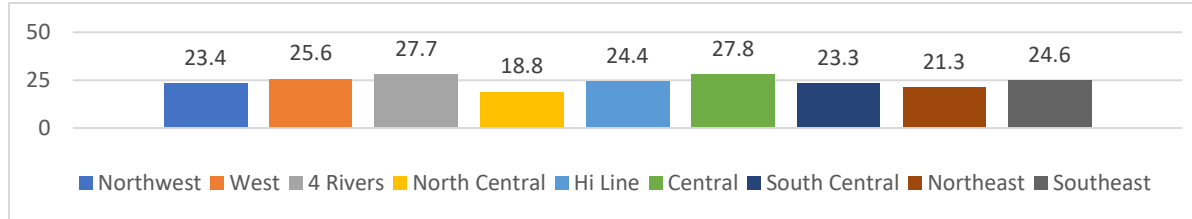
Actually attempted suicide/past 12 months



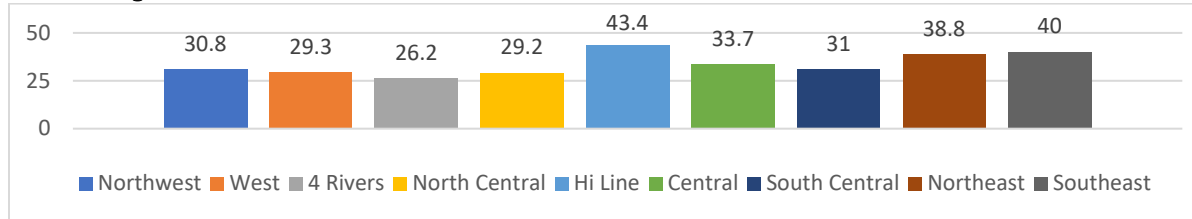




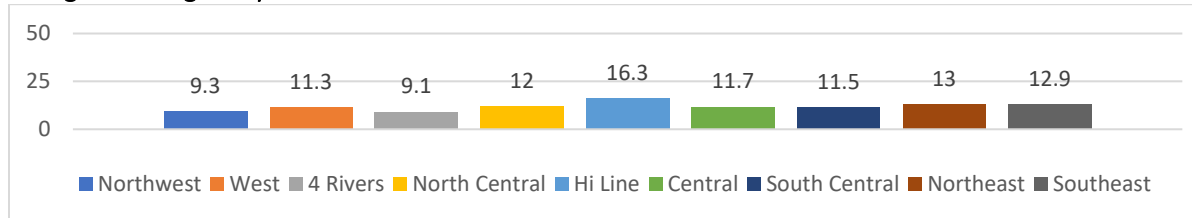
Among students who attempted suicide, had a suicide attempt that resulted in an injury, poisoning, or overdose that needed medical treatment/past 12 months



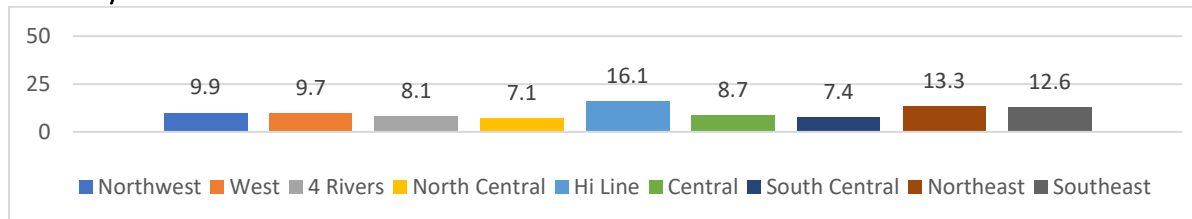
Have ever tried cigarette smoking



First tried cigarette smoking before age 13 years

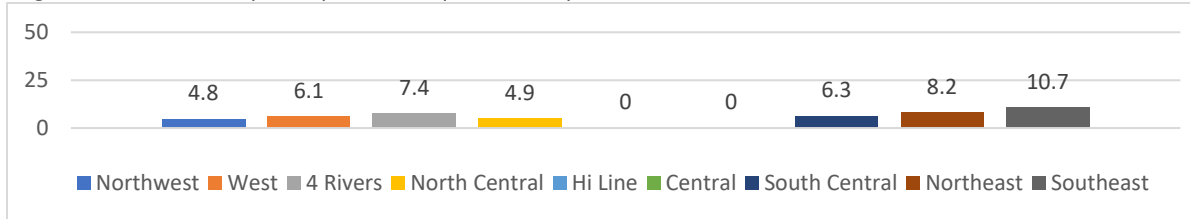


Smoked a cigarette/past 30 days – “current smoker”

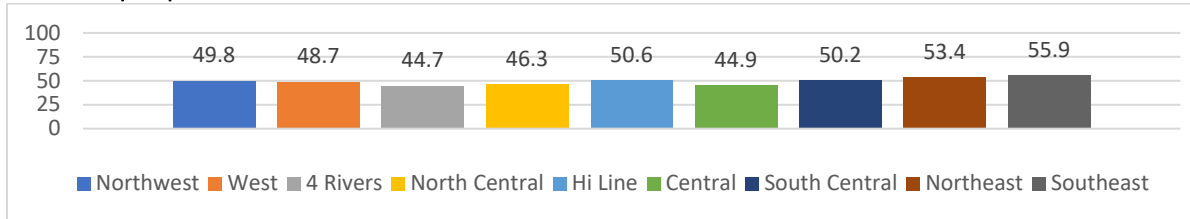




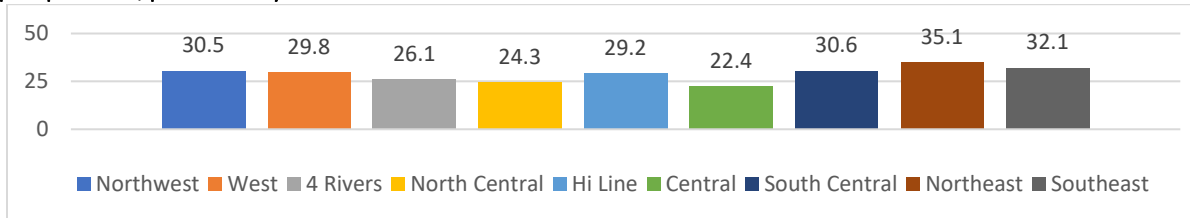
Smoked more than 10 cigarettes on the days they smoked/past 30 days



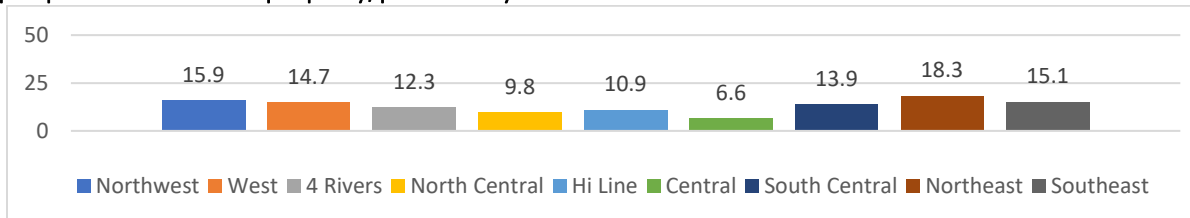
Have ever used an electronic vapor product



Used an electronic vapor product/past 30 days

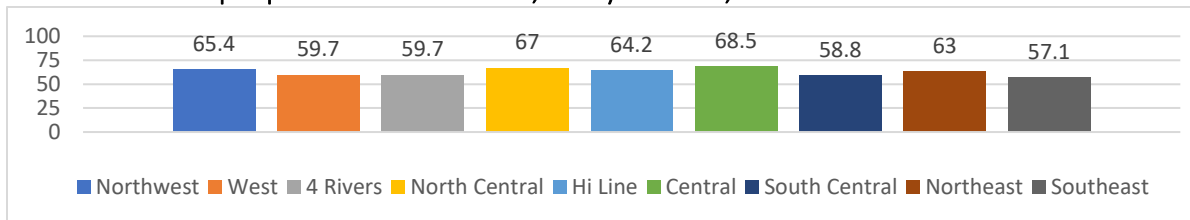


Used an electronic vapor product on school property/past 30 days

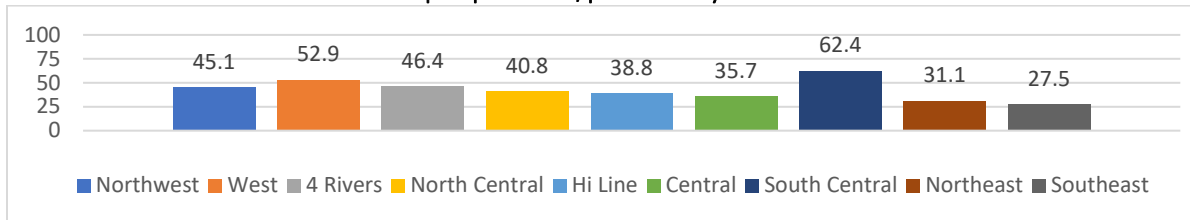




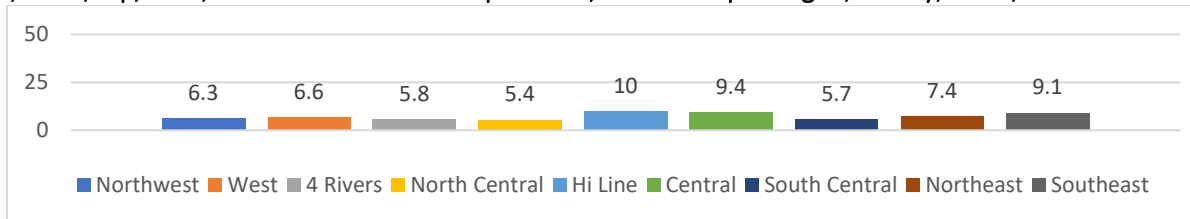
### Usually got or bought their electronic vapor products from a friend, family member, or someone else



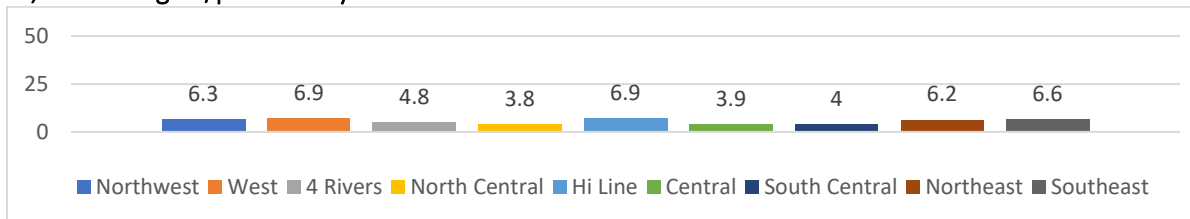
### When vaping, most often used fruit flavored electronic vapor products/past 30 days



### Used chewing tobacco, snuff, dip, snus, or dissolvable tobacco products, such as Copenhagen, Grizzly, Skoal, or Camel Snus/past 30 days

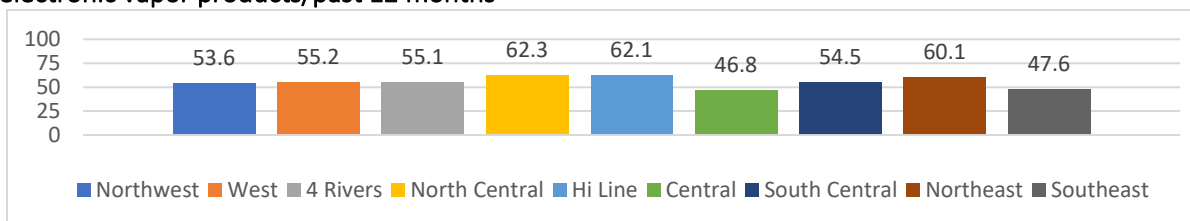


### Smoked cigars, cigarillos, or little cigars/past 30 days

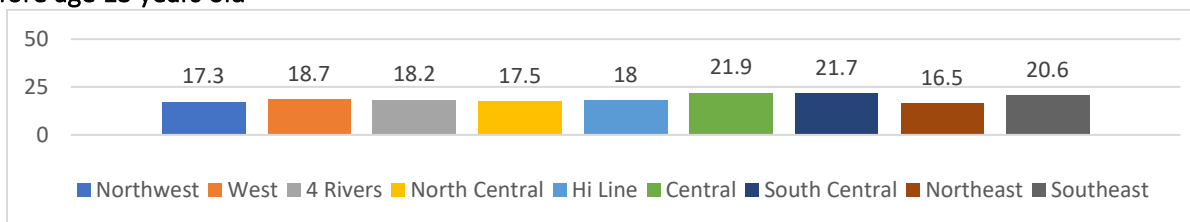




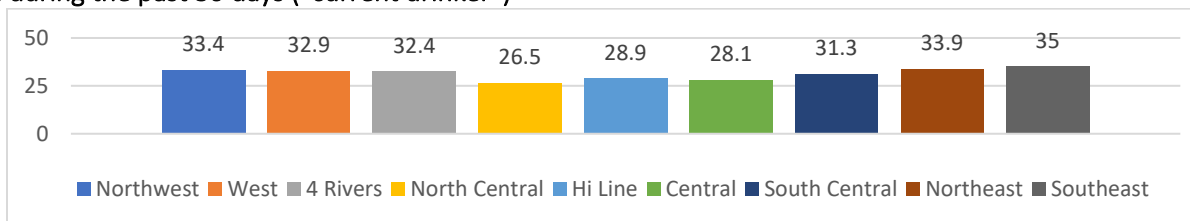
Among tobacco product users, those who tried to quit using all tobacco products, including cigarettes, cigars, smokeless tobacco, shisha, or hookah tobacco, and electronic vapor products/past 12 months



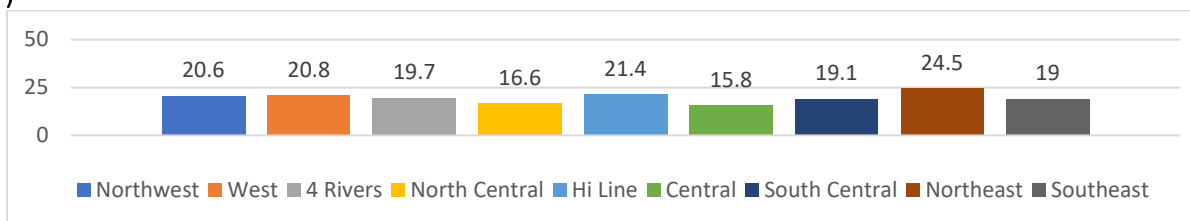
First drank alcohol before age 13 years old



Had a drink of alcohol during the past 30 days (“current drinker”)

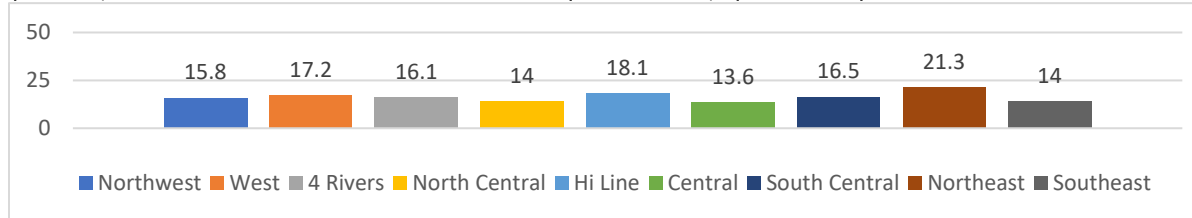


Had four or more drinks of alcohol in a row, if female, or five or more drinks of alcohol in a row, if male, within a couple hours during the past 30 days (“binge drinking”)

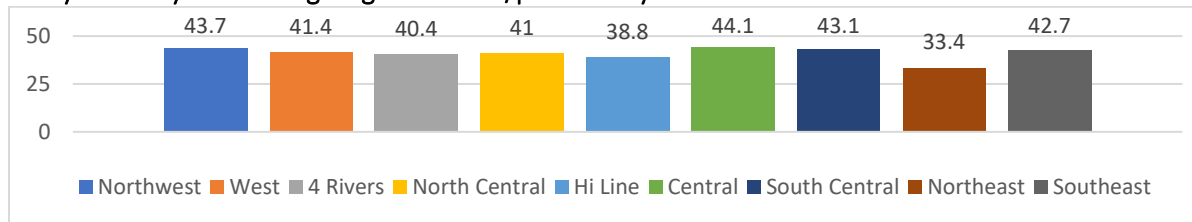




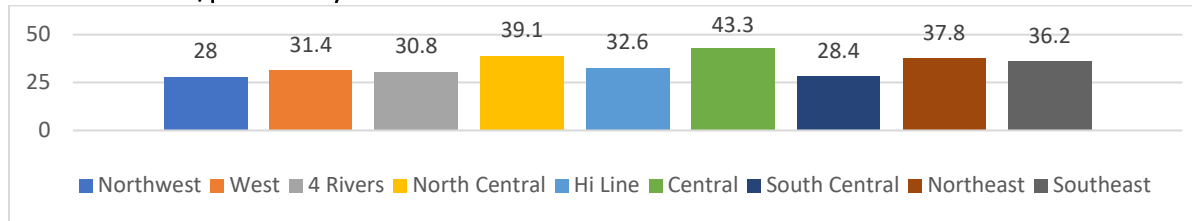
### Drank excessively on episode (10 or more drinks in a row within a couple of hours) /past 30 days



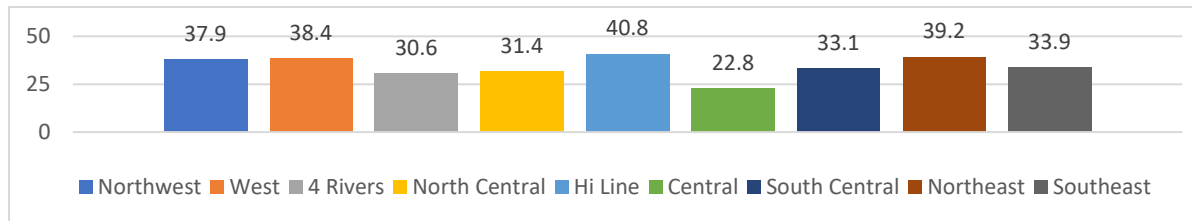
### Usually got the alcohol they drank by someone giving it to them /past 30 days



### When drinking, most often drank beer/past 30 days

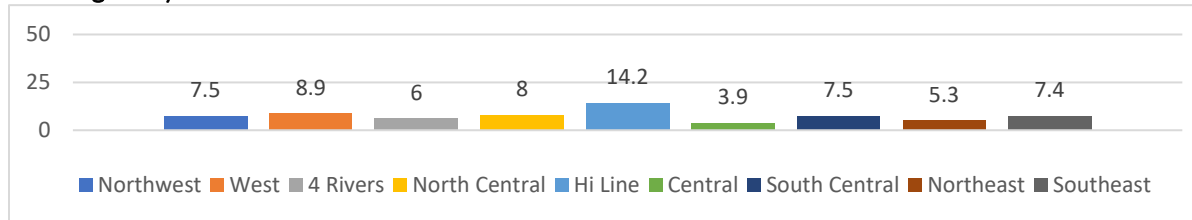


### Have ever used marijuana

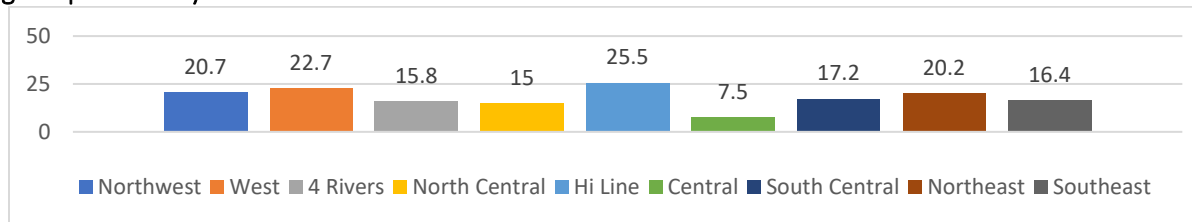




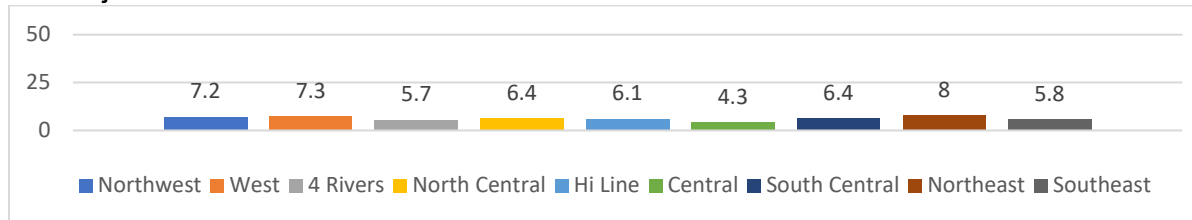
**First tried marijuana before age 13 years old**



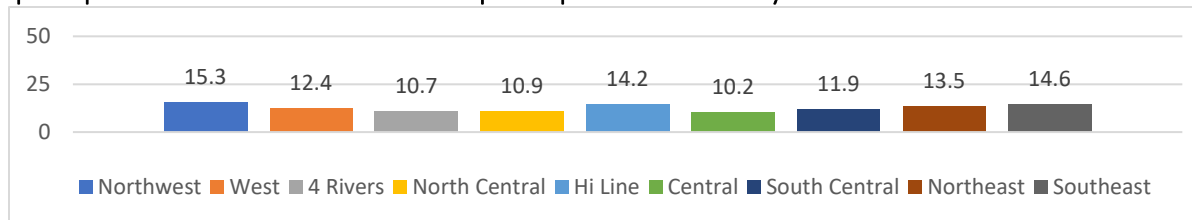
**Used marijuana during the past 30 days**



**Have ever used synthetic marijuana**

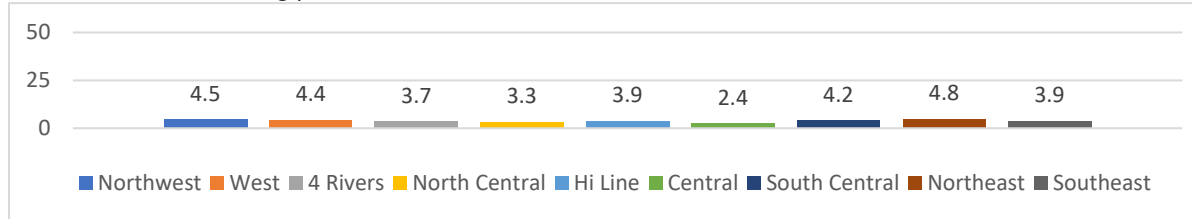


**Have ever used prescription pain medicine without a doctor's prescription or differently than how a doctor told them to use it**

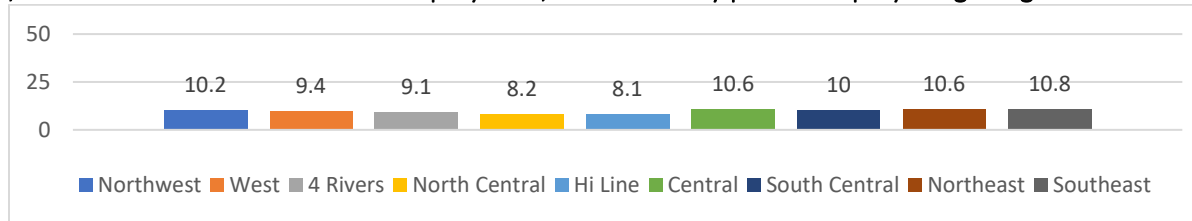




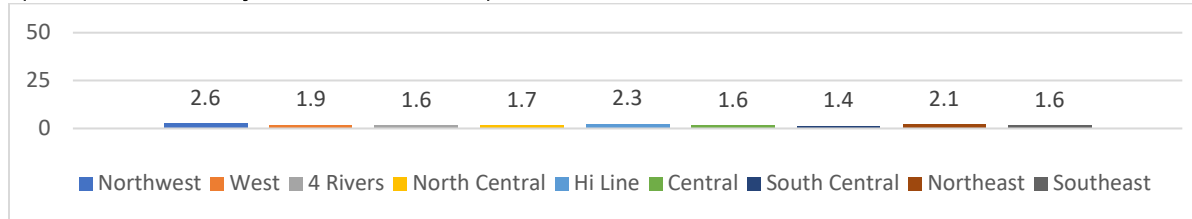
Have ever used any form of cocaine, including powder, crack, or freebase



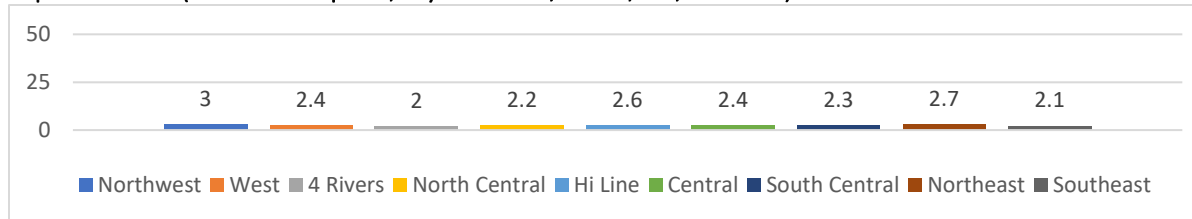
Have ever sniffed glue, breathed the contents of aerosol spray cans, or inhaled any paints or sprays to get high



Have ever used heroin (also called smack, junk, or China White)

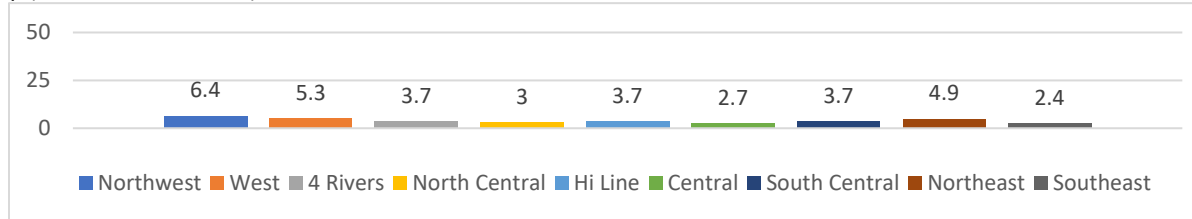


Have ever used methamphetamines (also called speed, crystal meth, crank, ice, or meth)

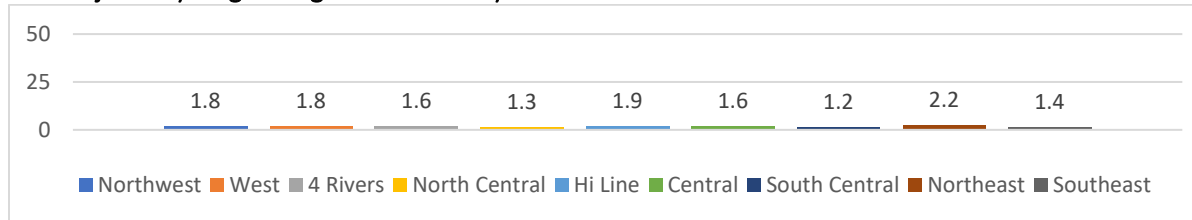




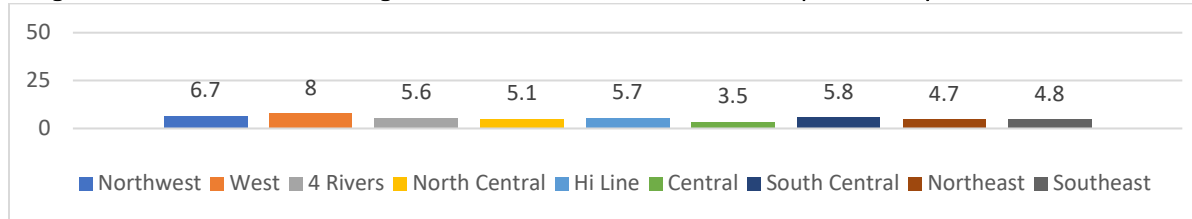
Have ever used ecstasy (also called MDMA)



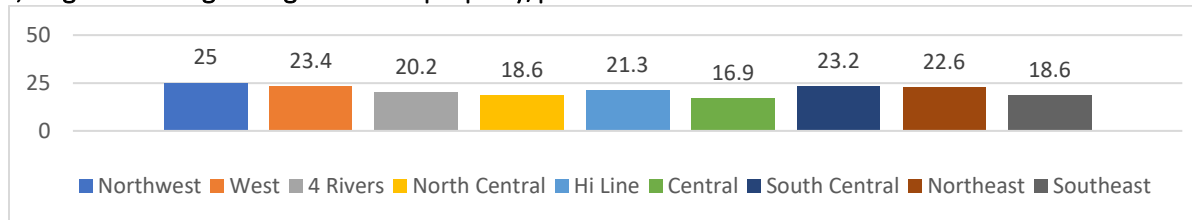
Have ever used a needle to inject any illegal drug into their body



Used a hallucinogenic drug, such as LSD, acid, PCP, angel dust, mescaline, or mushrooms/past 30 days



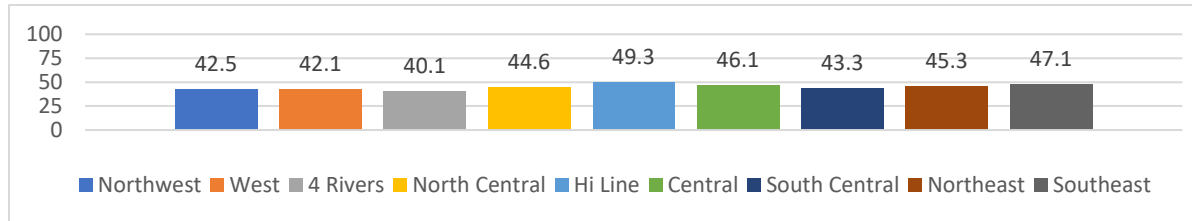
Had been offered, sold, or given an illegal drug on school property/past 12 months



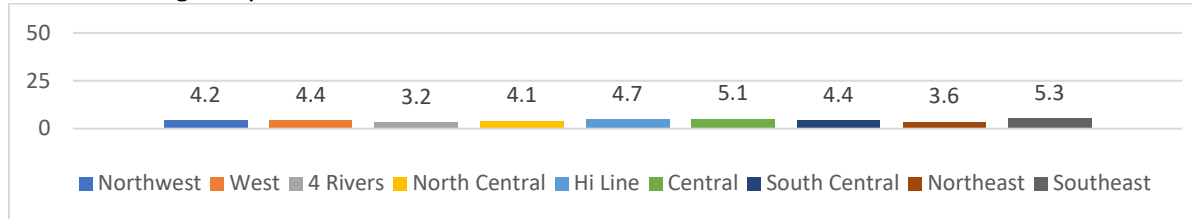




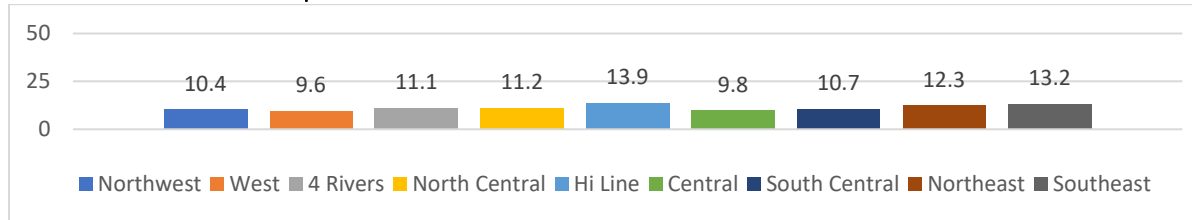
Have ever had sexual intercourse



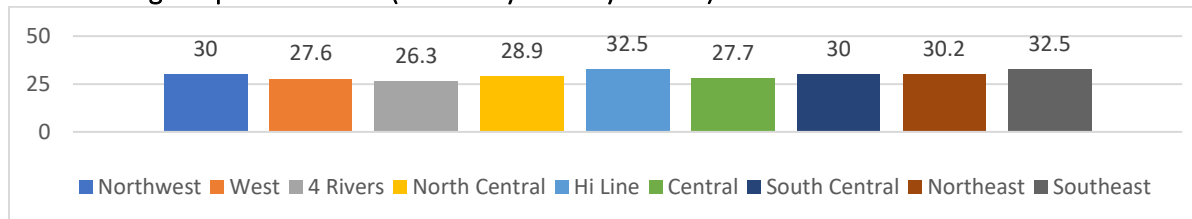
Had first sexual intercourse before age 13 years



Have had sexual intercourse with four or more persons in their lifetime

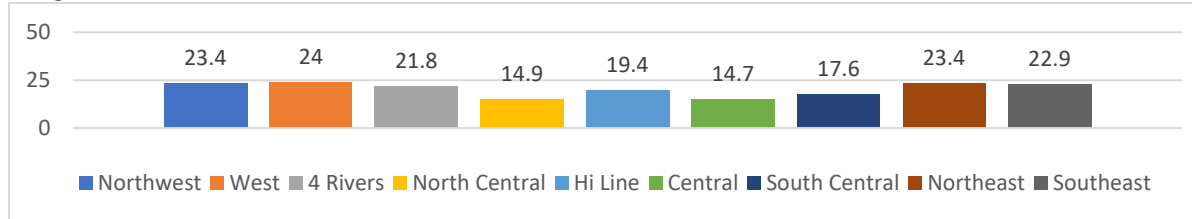


Have had sexual intercourse during the past 3 months (“currently sexually active”)

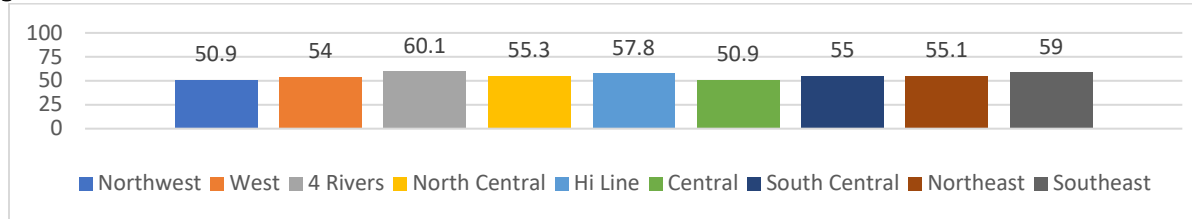




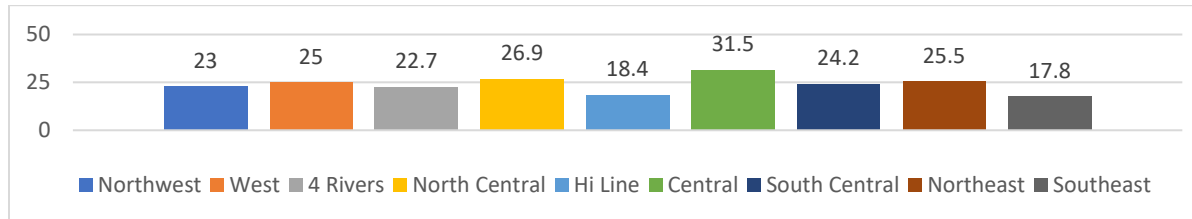
**Drank alcohol or used drugs before last sexual intercourse**



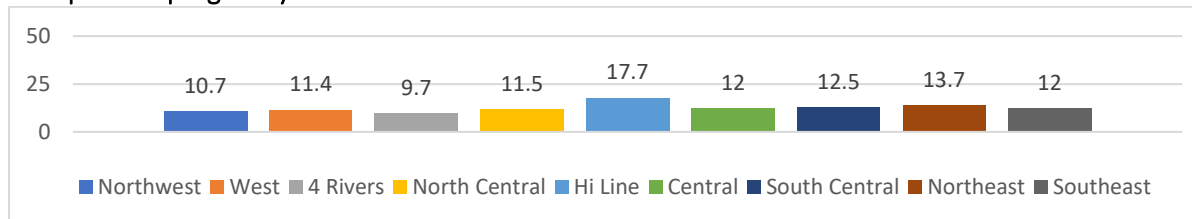
**Used a condom during last sexual intercourse**



**Used birth control pills before last sexual intercourse**

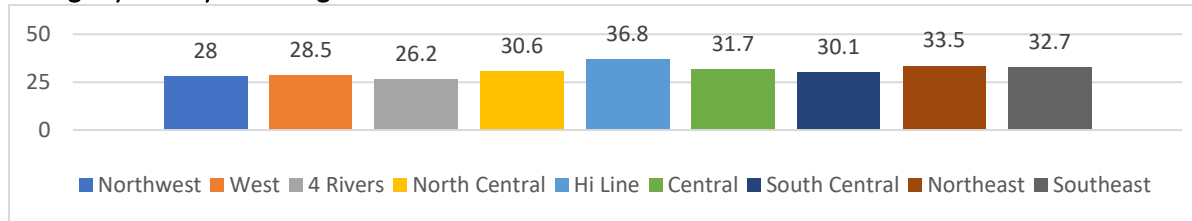


**Did not use any method to prevent pregnancy at last sexual intercourse**

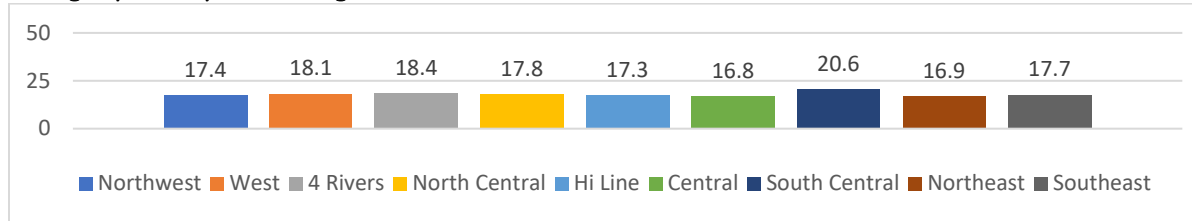




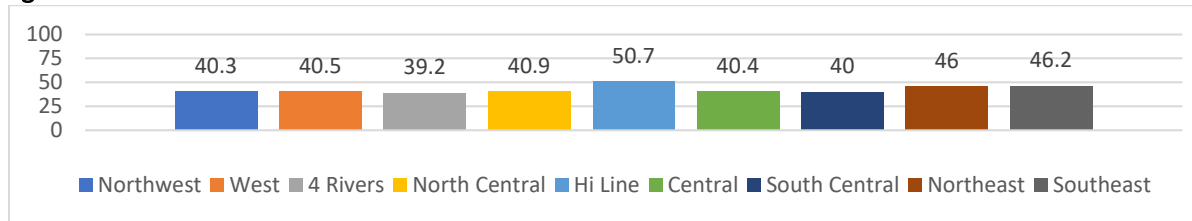
Described themselves as slightly or very overweight



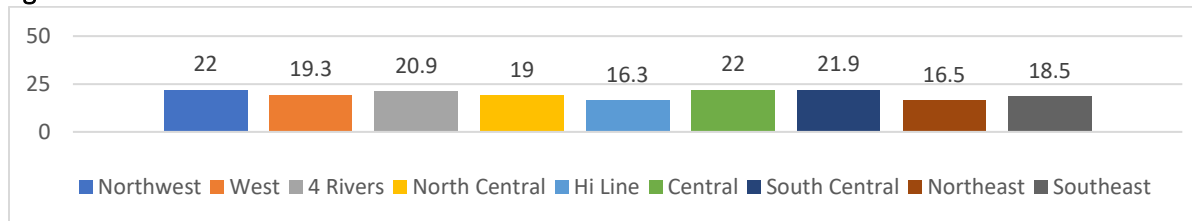
Described themselves as slightly or very underweight



Were trying to lose weight

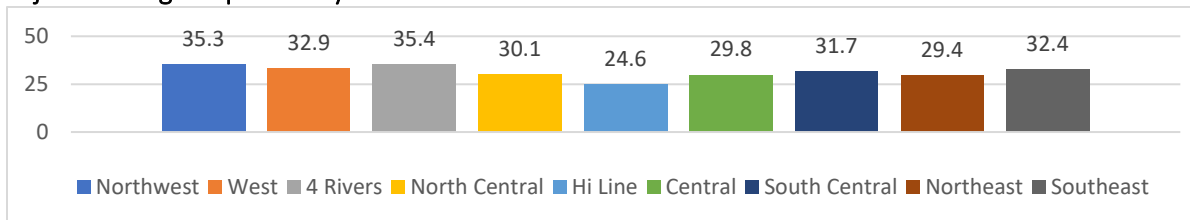


Were trying to gain weight

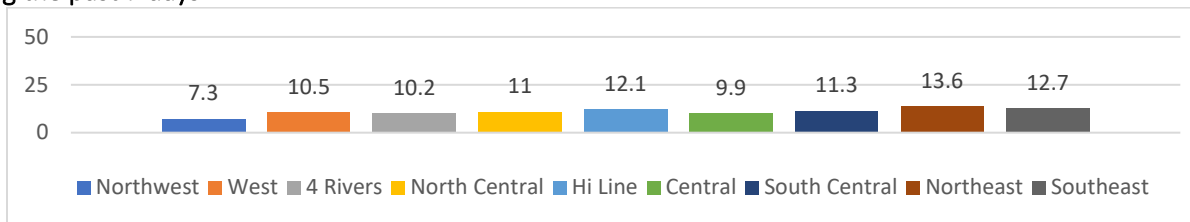




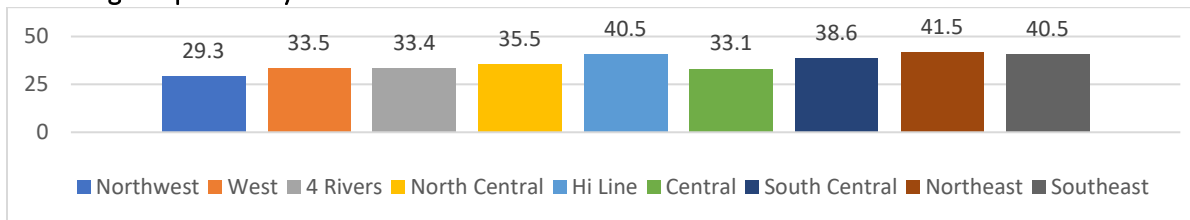
### Did not drink 100% fruit juice during the past 7 days



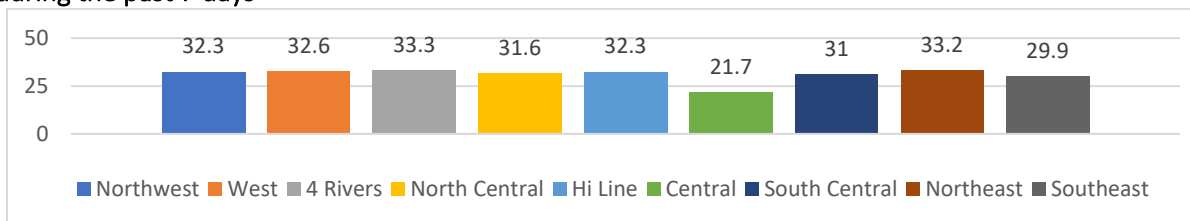
### Did not eat fruit during the past 7 days



### Did not eat a green salad during the past 7 days

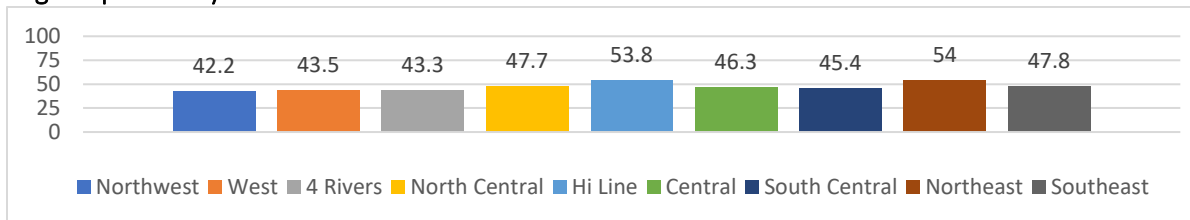


### Did not eat potatoes during the past 7 days

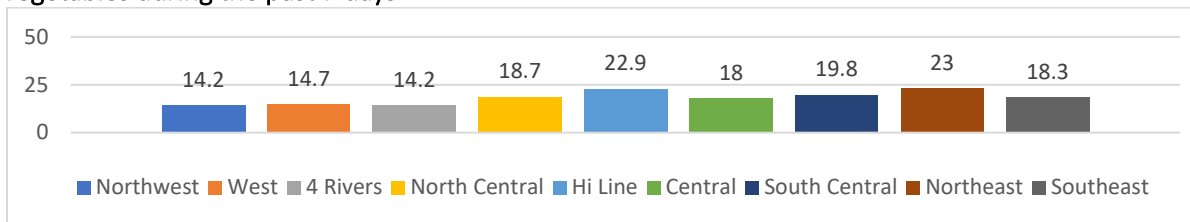




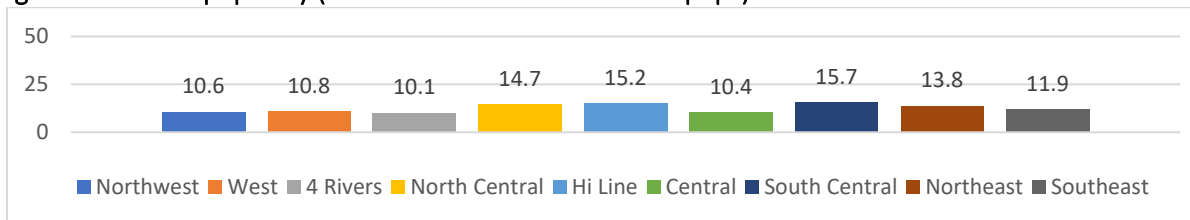
Did not eat carrots during the past 7 days



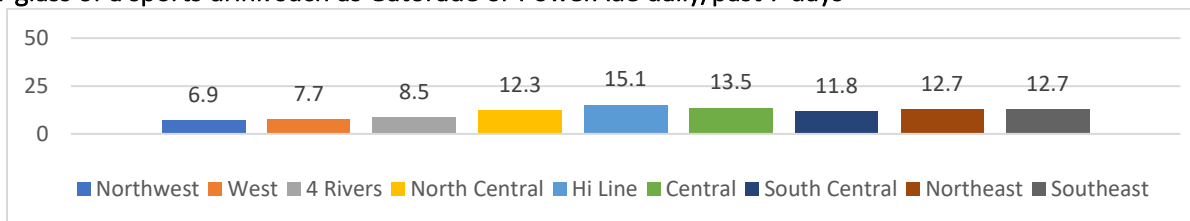
Did not eat any other vegetables during the past 7 days



Drank a can, bottle, or glass of soda or pop daily (do not count diet soda or diet pops)

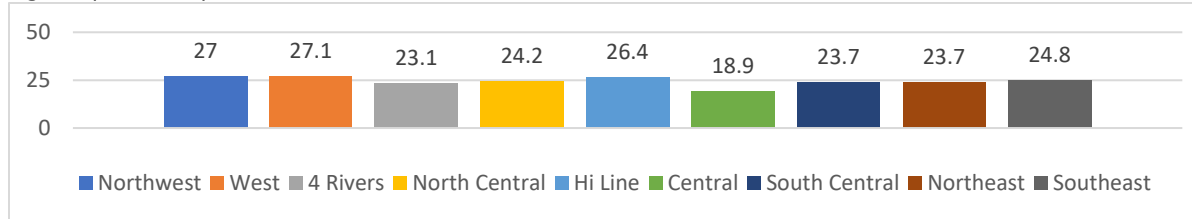


Drank a can, bottle, or glass of a sports drink such as Gatorade or PowerAde daily/past 7 days

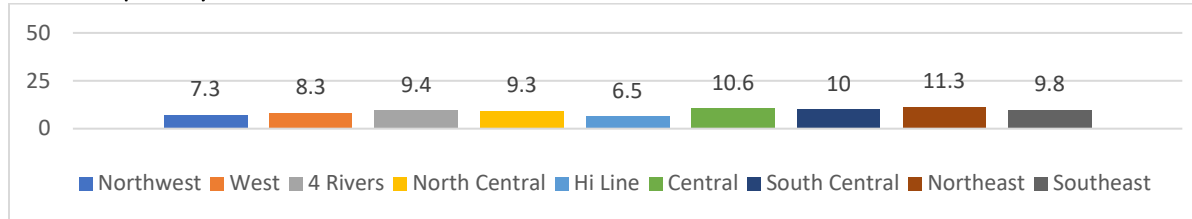




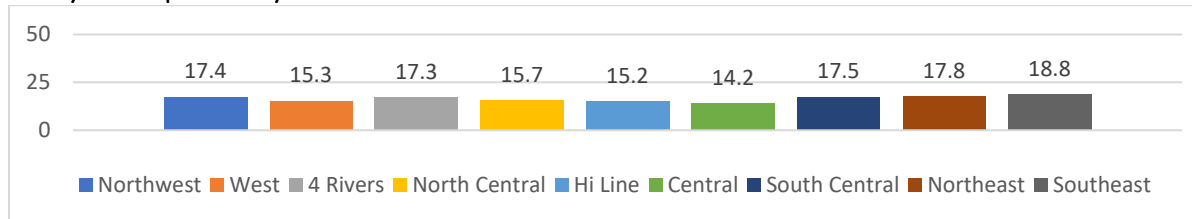
Did not drink milk during the past 7 days



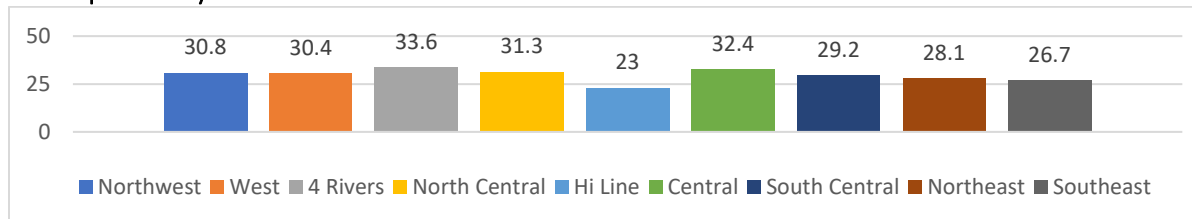
Drank 3 or more glasses of milk per day



Did not eat breakfast on any of the past 7 days

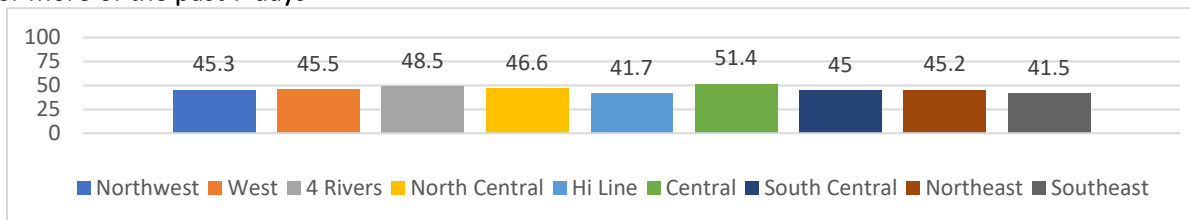


Ate breakfast on each of the past 7 days

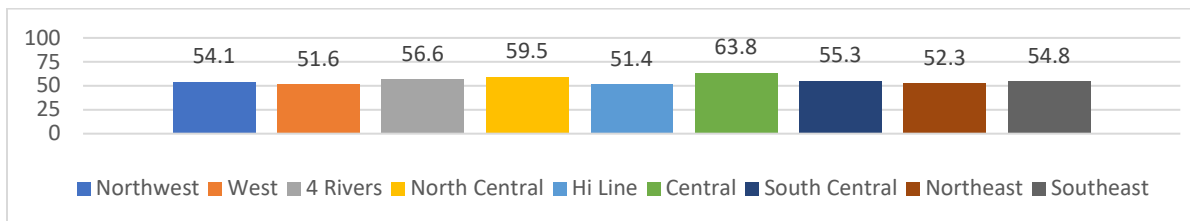




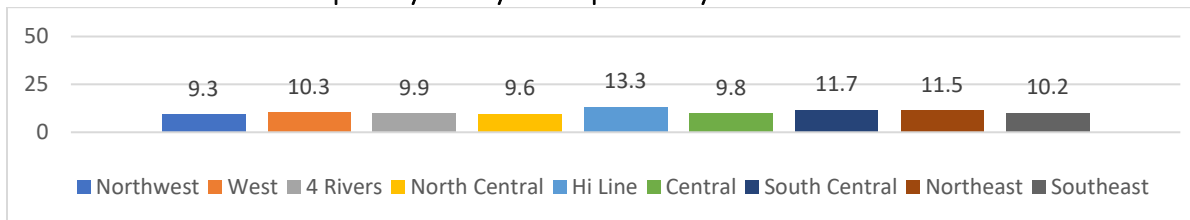
**Ate breakfast on five or more of the past 7 days**



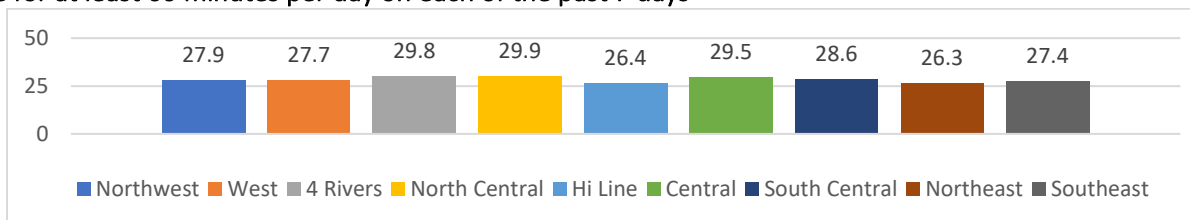
**Were physically active for at least 60 minutes per day on five or more of the past 7 days (physical activity that increased heart rate and made you breathe hard)**



**Were not physically active for at least 60 minutes per day on any of the past 7 days**

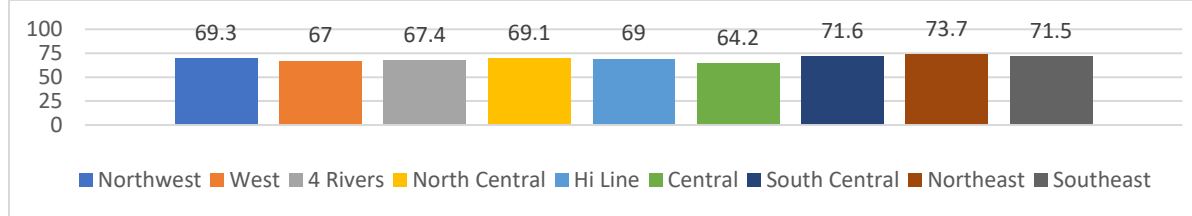


**Were physically active for at least 60 minutes per day on each of the past 7 days**

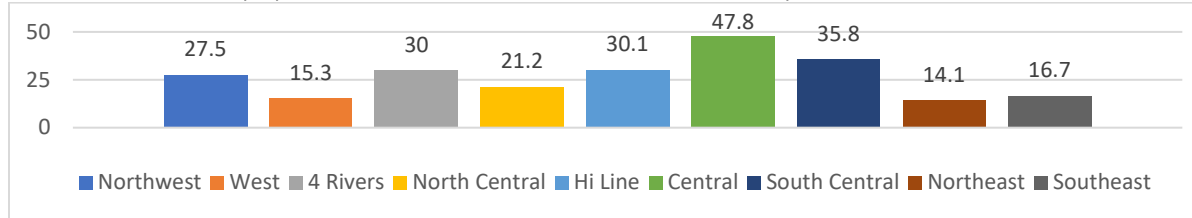




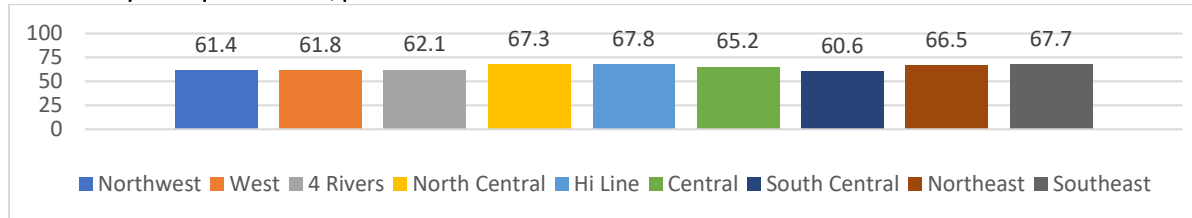
Spent 3 or more hours on screen time on an average school day (e.g., in front of a TV, computer, smart phone, or other electronic device watching shows or videos, playing games, accessing the Internet, or using social media. Do not count time spent doing schoolwork.)



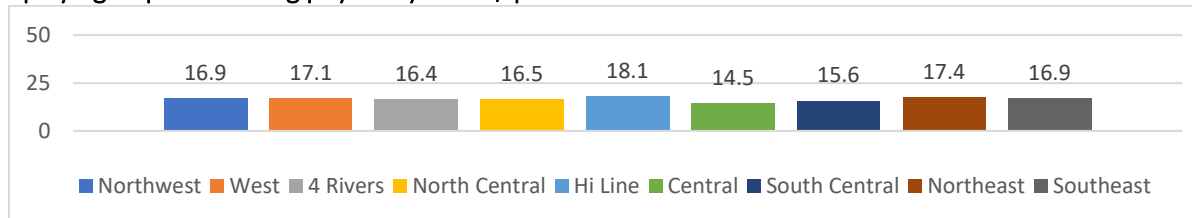
During an average school week, attended physical education classes on each of the 5 days



Played on a school or community-led sports team/past 12 months



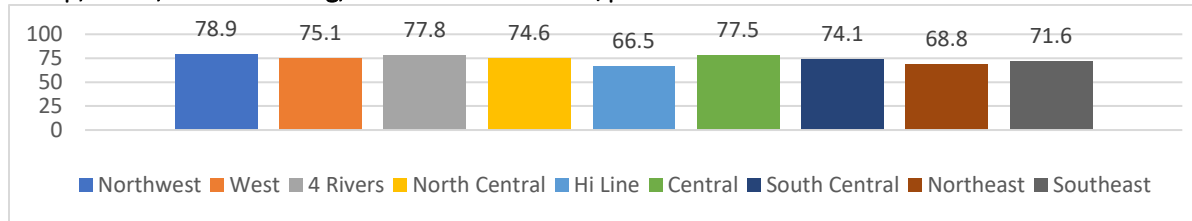
Had a concussion from playing a sport or being physically active/ past 12 months



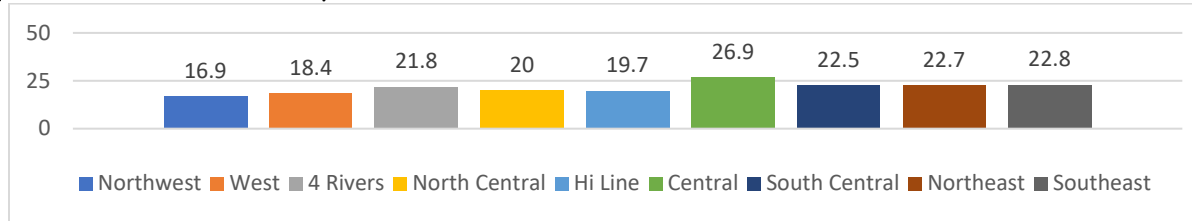




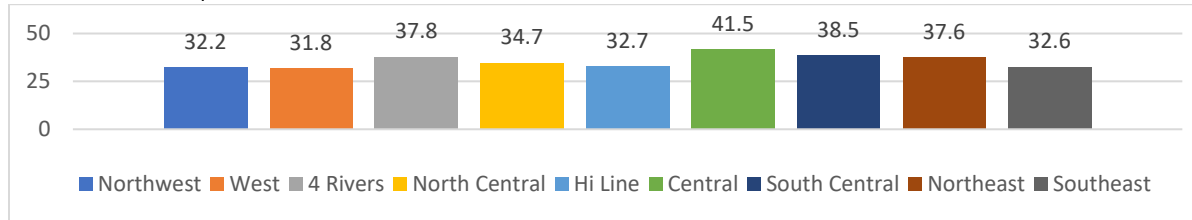
**Saw a dentist for a check-up, exam, teeth cleaning, or other dental work/past 12 months**



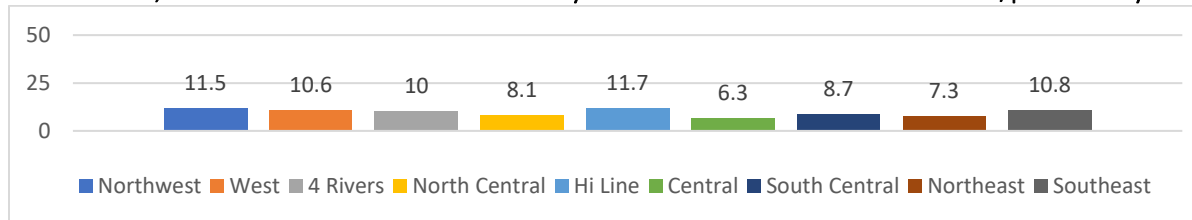
**Had ever been told by a doctor or nurse that they have asthma**



**Among students who ever had asthma, those who still have asthma**

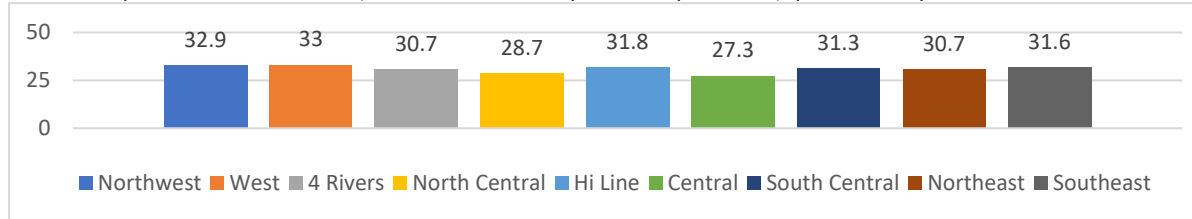


**Among students who have asthma, those who missed one or more days of school because of their asthma/past 30 days**

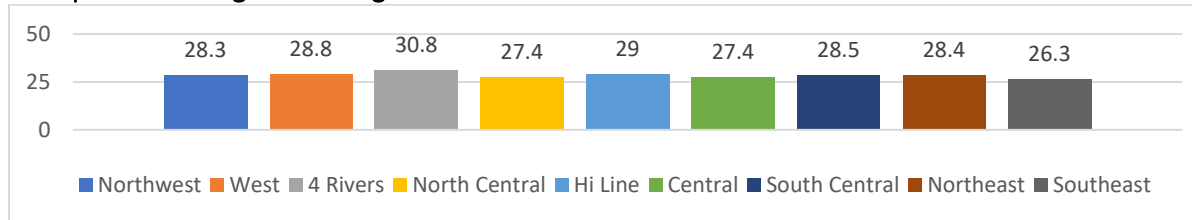




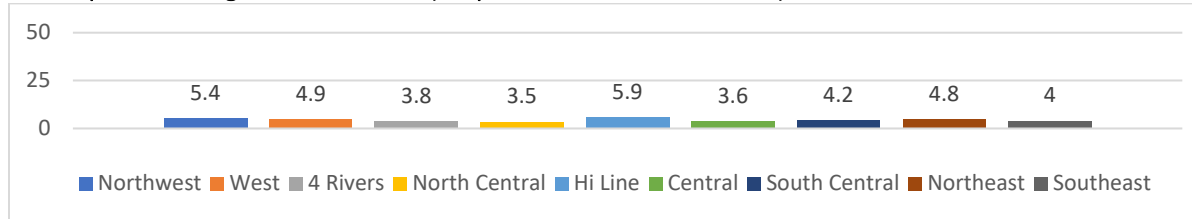
Always or most of the time had poor mental health (i.e., stress, anxiety, and depression)/past 30 days



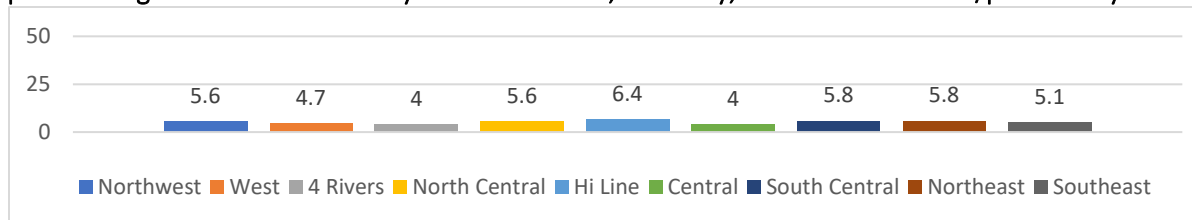
Got 8 or more hours of sleep on an average school night



Did not usually sleep in their parent’s or guardian’s home (“experienced homelessness”)

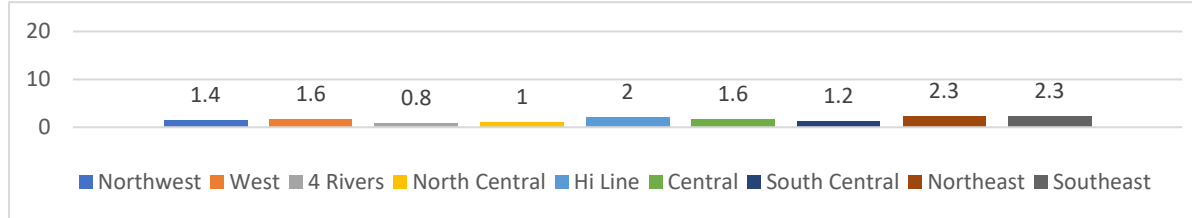


Slept away from their parents or guardians because they were kicked out, ran away, or were abandoned/past 30 days

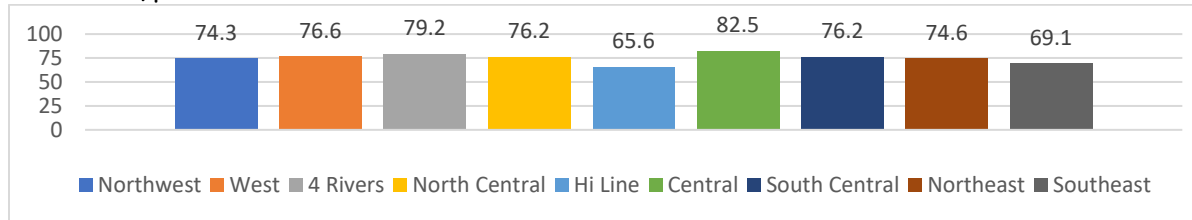




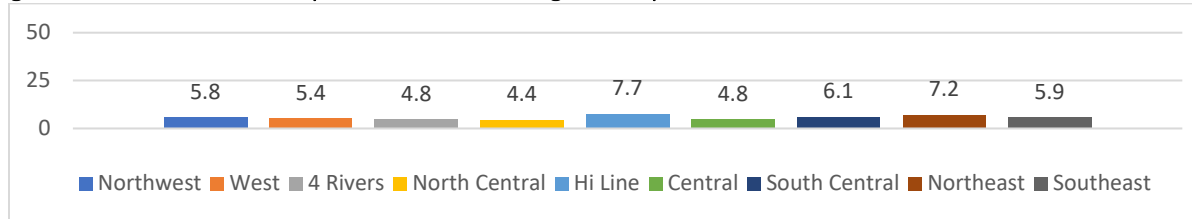
Always or most of the time went hungry because there was not enough food in their home/past 30 days



Earned mostly A's or B's in school/past 12 months



Used an indoor tanning device such as a sunlamp, sunbed, or tanning booth/past 12 months



Received help from a resource teacher, speech therapist or other special education teacher at school/past 12 months

