

User Management

District ARs and STCs have been assigned the District Test Coordinator (DTC) role.

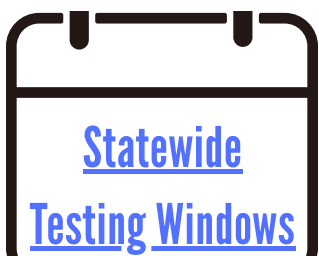
Districts/Schools create and maintain user accounts within the Kite Platform. *When adding teacher accounts, please use a unique value such as the teacher's SEID number or email in the Educator Identifier field.*

If a user already exists for MAST, just add a DLM role to their profile.

Users administering both DLM and MAST must have user roles for both assessments, and all educators administering DLM must have the teacher role.

Resources

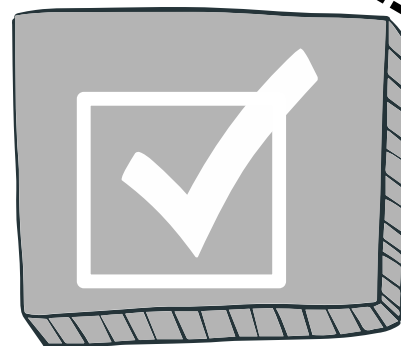
- [Adding and Editing Users Video](#)
- [Data Management Manual](#)
- [Educator Portal User Guide](#)



DLM

Dynamic Learning Maps Math, ELA, and Science

Before Testing Tasks

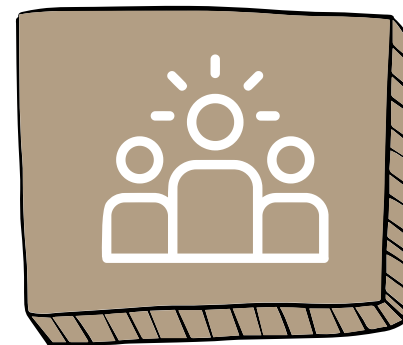


Ensuring Eligibility

Only students with active IEPs AND the Alternate Assessment checkbox marked under the Statewide Assessments Editor are eligible to take DLM assessments. Ensure all students eligible for Alternate Assessments are identified and in the Kite Portal before the opening of each window.

Resources

- [Alternate Assessment Eligibility Guidelines](#)

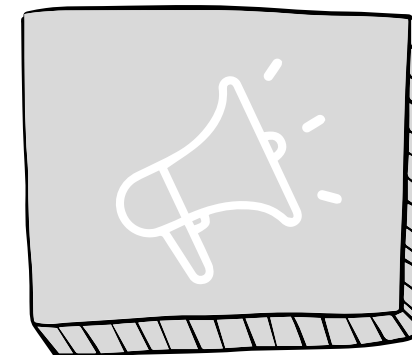


Rostering Students

After the OPI performs an initial student enrollment in mid-August, districts can begin rostering students to teachers in the Kite Educator Portal. Initial rostering should be completed at least one week before the opening of each testing window.

Resources

- [Adding and Editing Rosters Video](#)
- [Educator Portal User Guide](#)

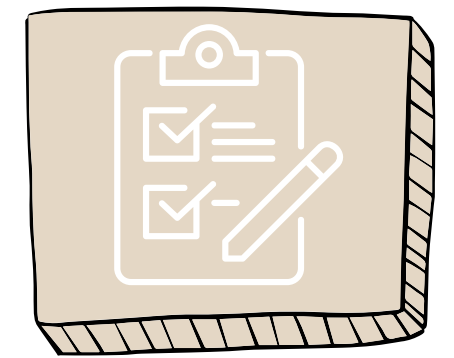


Test Administrator Training

All test administrators must complete DLM administrator training prior to administration of any testlet. Training can either be completed through an OPI-facilitated training or independently in the Kite Educator Portal. The [DLM Training for District Roles](#) course can help identify which training is required for each role.

Resources:

- [Guide to DLM Required Test Administrator Training](#)
- [Assessment Coordinator Manual](#)



First Contact Survey & PNP Profile

After the OPI performs an initial student enrollment in mid-August, districts can begin entering student PNPs (accommodations) in the Kite Educator Portal and complete each student's first contact survey. Both should be completed at least one week before the opening of each testing window.

Resources

- [First Contact Survey and PNP Video](#)
- [Accessibility Crosswalk](#)
- [Accessibility Manual](#)

