

MAST Overview

The MAST assessment is Montana's statewide assessment students take in Grades 3-8 for Math and English Language Arts. The MAST is a "through year" assessment that satisfies federal testing requirements and better aligns assessment with instruction.

Statewide assessments provide only one measure of student learning, but when combined with grades, classroom activities, unit quizzes and tests, and district-level assessments, statewide assessments can complete the picture of a child's abilities and help him/her down a path toward academic success in reaching Montana's Content Standards.

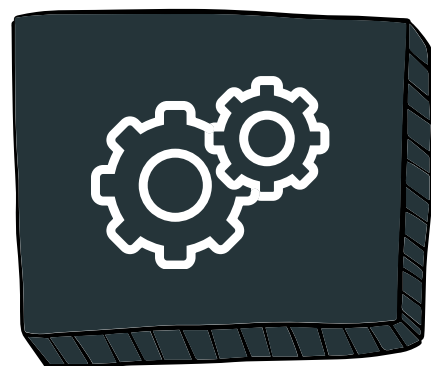
Resources

- [MAST Overview](#)
- [Six Things Stakeholders Should Know About Participation and Testing in Montana](#)

MAST

Montana Aligned to Standards Through-Year

Parent Resources

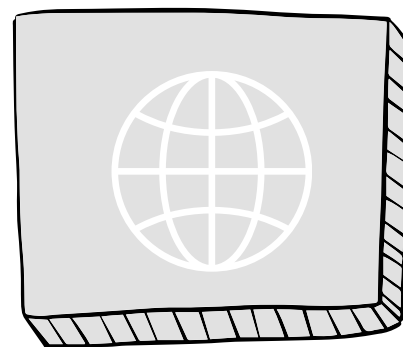


Accessing Your Child(ren)'s MAST Score Reports

Student reports are available weekly after completion of each testlet within window. If your child's district has set up the Kite Parent Portal, you will be able to access individual testlet results by logging into the Kite Parent Portal with the email address you have on file with the school.

Resources

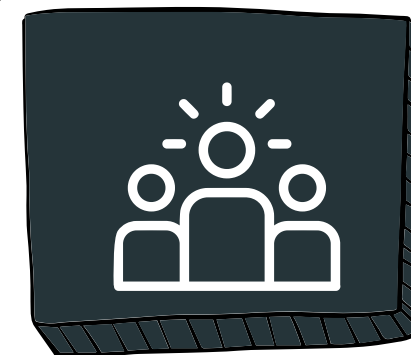
- (found on [MAST Portal](#))
- [Parent Portal Manual & Tutorial](#)
 - [Kite Parent Portal](#) log in page



Talking to my child about their MAST results

Talking about your child's score report helps support student learning and success in the classroom. It's important to understand your child's data and talk with your child about their strengths and areas of growth.

- What do you think you did well?
- What would you like to improve?
- Goals/next steps



Understanding MAST Score Reports

Each testlet score report provides a snapshot of academic performance on a small set of related standards. Score reports should be considered alongside other information.

Resources

(found on [MAST Portal](#))

- [Math](#) and [ELA](#) Blueprint documents
- [Math](#) and [ELA](#) Assessment Specifications

Testlet & Progress Reporting

- [Progress Overview](#) for Families
- [Understanding MAST Testlet Levels VIDEO](#) and [Slide Deck](#)
- [Testlet](#) and [Progress](#) Interpretive Guides

Through-Year Reporting

- [Through-Year Overview](#) for Families
- [Through-Year Interpretive Guide](#)



Thank you for supporting your child in their learning.

Please reach out to your child's school if you have more questions

MAST Testing Windows

The actual number of testlets your child(ren) takes each testing window will be contingent on your district's local curriculum sequence.

