

Schedule MAST Math Testlets

Opens July 22, 2024. District math testlet schedules must be submitted by **Sept. 20, 2024**. District STCs have access to the MAST Scheduler and can create other district accounts.

Resources (found on [MAST Portal](#))

- Scheduler Portal
- Scheduler Tool Manual
- MAST Scheduling Guide & FAQs for Test Coordinators
- Math Standards Blueprint
- ELA Standards Blueprint
- [MAST Testing Windows](#)

Professional Learning Opportunities

- [Scheduler Tool Focused Support Video](#) and [Slides](#)
- Scheduler Training [Recording](#)

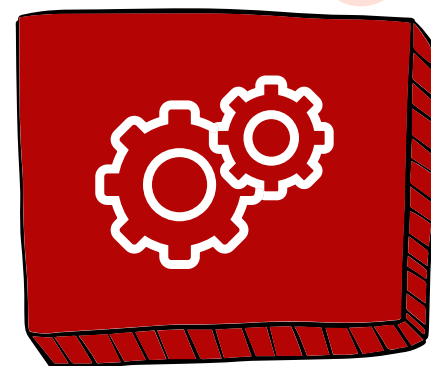
July 23-Sept. 19

MAST Weekly Office Hours
8:00-9:00 AM every Tues.
3:00-4:00 PM every Thurs.

Montana Aligned to Standards Through-Year MAST



Before Testing Tasks

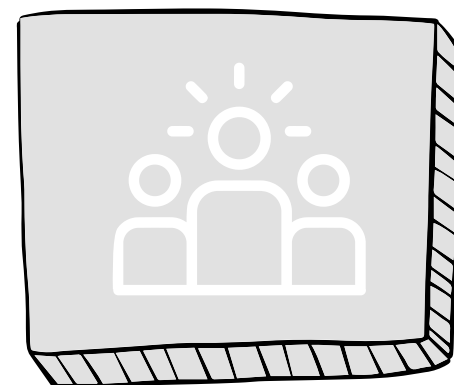


User Management

District ARs and STCs have access to the Kite Educator Portal with the District Test Coordinator (DTC) role. Districts/Schools create and maintain user accounts within the Kite Platform. *When adding teacher accounts, please use a unique value such as the teacher's SEID number or email in the Educator Identifier field.*

Resources (found on [MAST Portal](#))

- User Management Quick Reference Guide
- [User Management Focused Support Video](#) and [Slides](#)

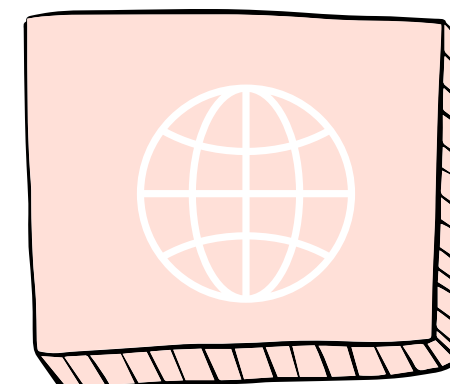


Rostering Students

After the OPI performs an initial student enrollment, districts can begin rostering students to teachers **Aug. 5, 2024** in the Kite Educator Portal. Initial rostering due **Sept. 30, 2024**.

Resources (found on [MAST Portal](#))

- Kite Educator Portal Manual
- [Rostering Focused Support Video](#) and [Slides](#)

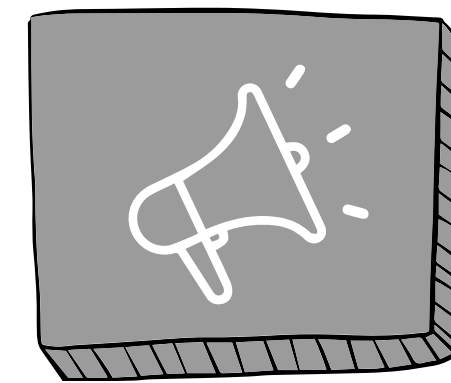


Entering Student PNP's

Districts can begin entering student PNP's (accommodations) **August 5, 2024** in the Kite Educator Portal. Initial entering of PNP's due **Sept. 30, 2024**.

Resources (found on [MAST Portal](#))

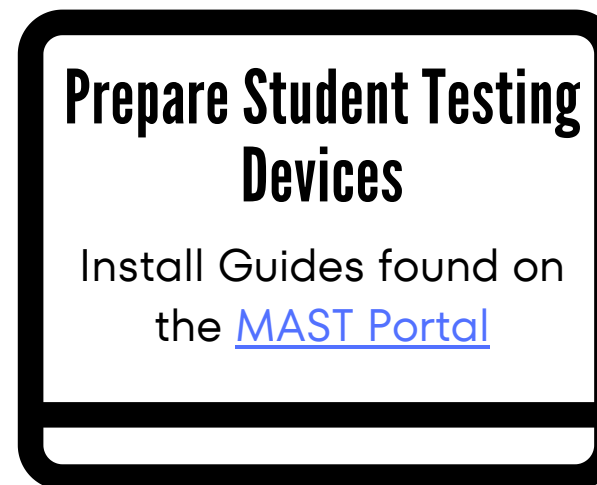
- Kite Educator Portal Manual
- MAST Accessibility Guide
- MAST Accommodations & Accessibility Crosswalk
- [Entering Student PNP's Focused Support Video](#) and [Slides](#)



Professional Learning

- [MAST Training, Install Links, & Whitelisting Document](#)
- MAST Summit (**Sept. 5th**) [REGISTER](#)
- [MAST Training & Listening Sessions](#) and [Office Hours](#)
- [STC Workshop Series](#)
- [OPI Assessment Monthly Bulletin](#)

[Zoom Link for all Virtual Live Sessions](#)



Prepare Student Testing Devices

Install Guides found on the [MAST Portal](#)