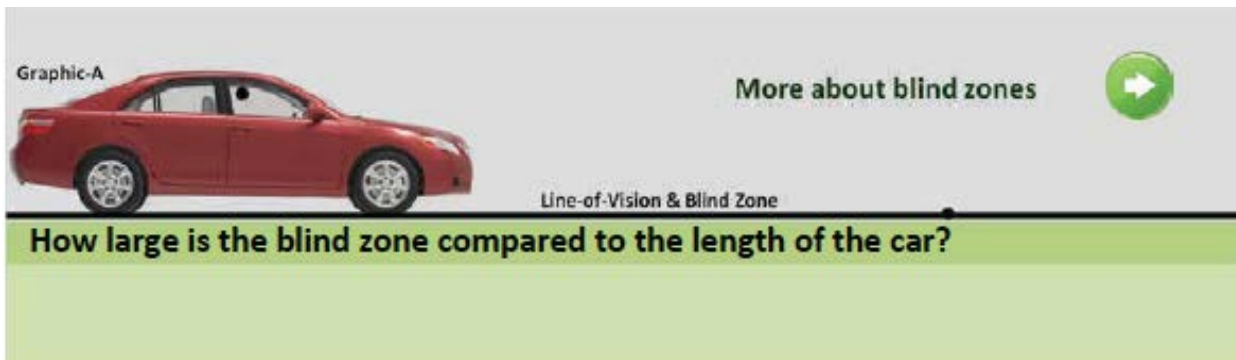


REFERENCE POINT ROUNDUP – Rich Hanson

Blind Zone Activity:

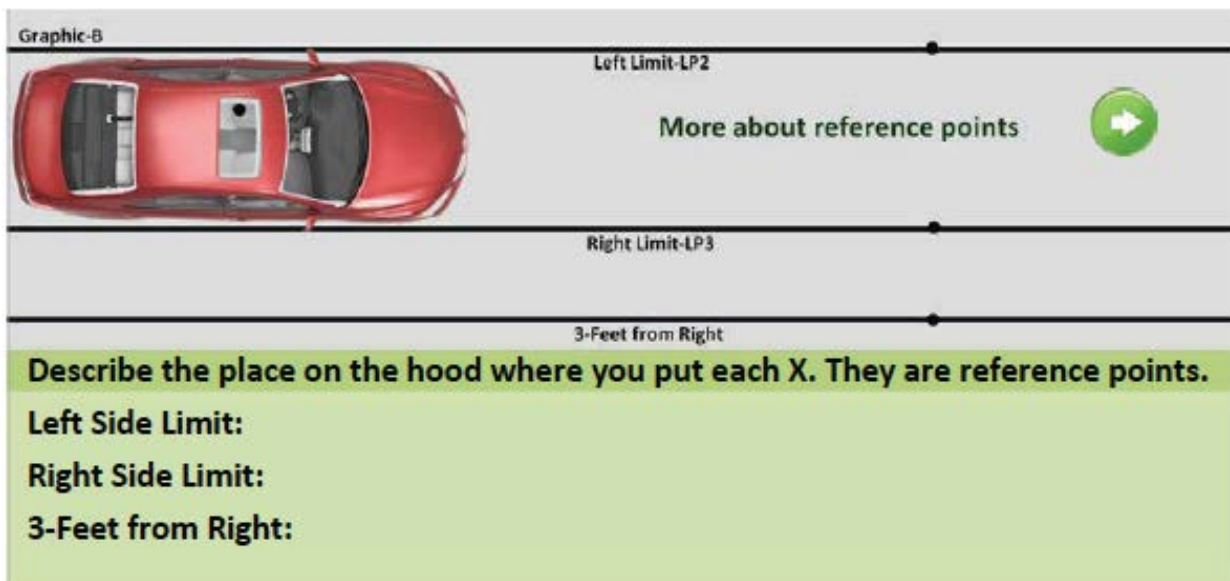
Connect the dots and determine how much of the road in front of the car is not visible to the driver.



About how much of the road is not visible?

Standard Reference Point Activity

Using a straight edge and a pen or pencil connect the dot from the driver's seat to the dots on the lines in front of the car. Where the line crosses the hood or windshield of the car make an X. That is where the standard reference point is on most vehicles.



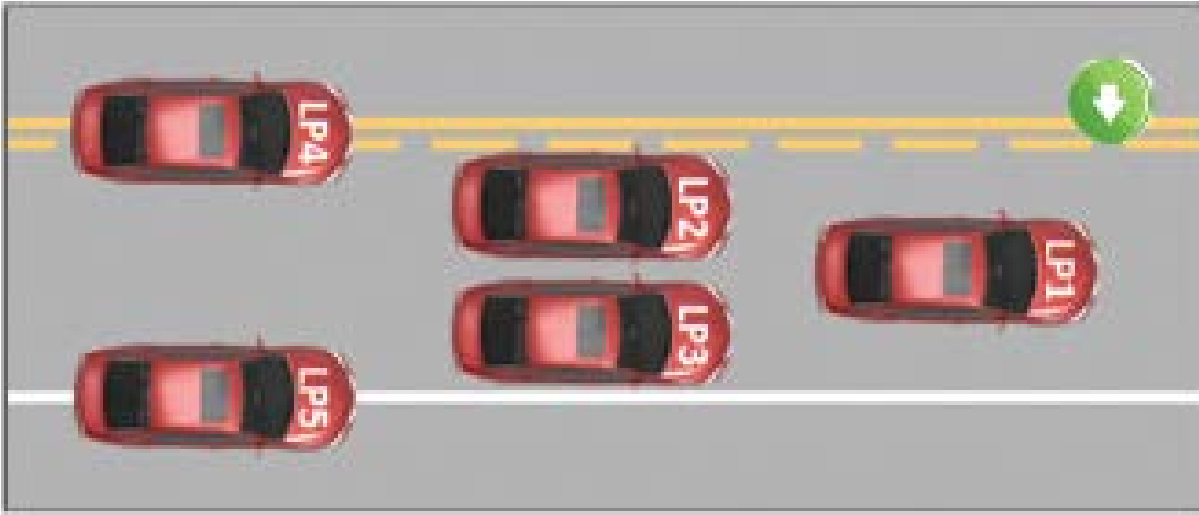
Uses for the standard reference points:

Right side limit:

Left side limit:

Three feet from right edge:

Lane Positions: Benefits to knowing lane position



LP 1:

LP 2:

LP 3:

LP 4:

LP 5: