

EMBARGOED
UNTIL MARCH 15, 2013

ANNUAL MONTANA ACCREDITATION REPORT

2012 – 2013

Board of Public Education Meeting – March 2013



Montana
Office of Public Instruction
Denise Juneau, State Superintendent

opi.mt.gov

Annual Montana Accreditation Report

TABLE OF CONTENTS

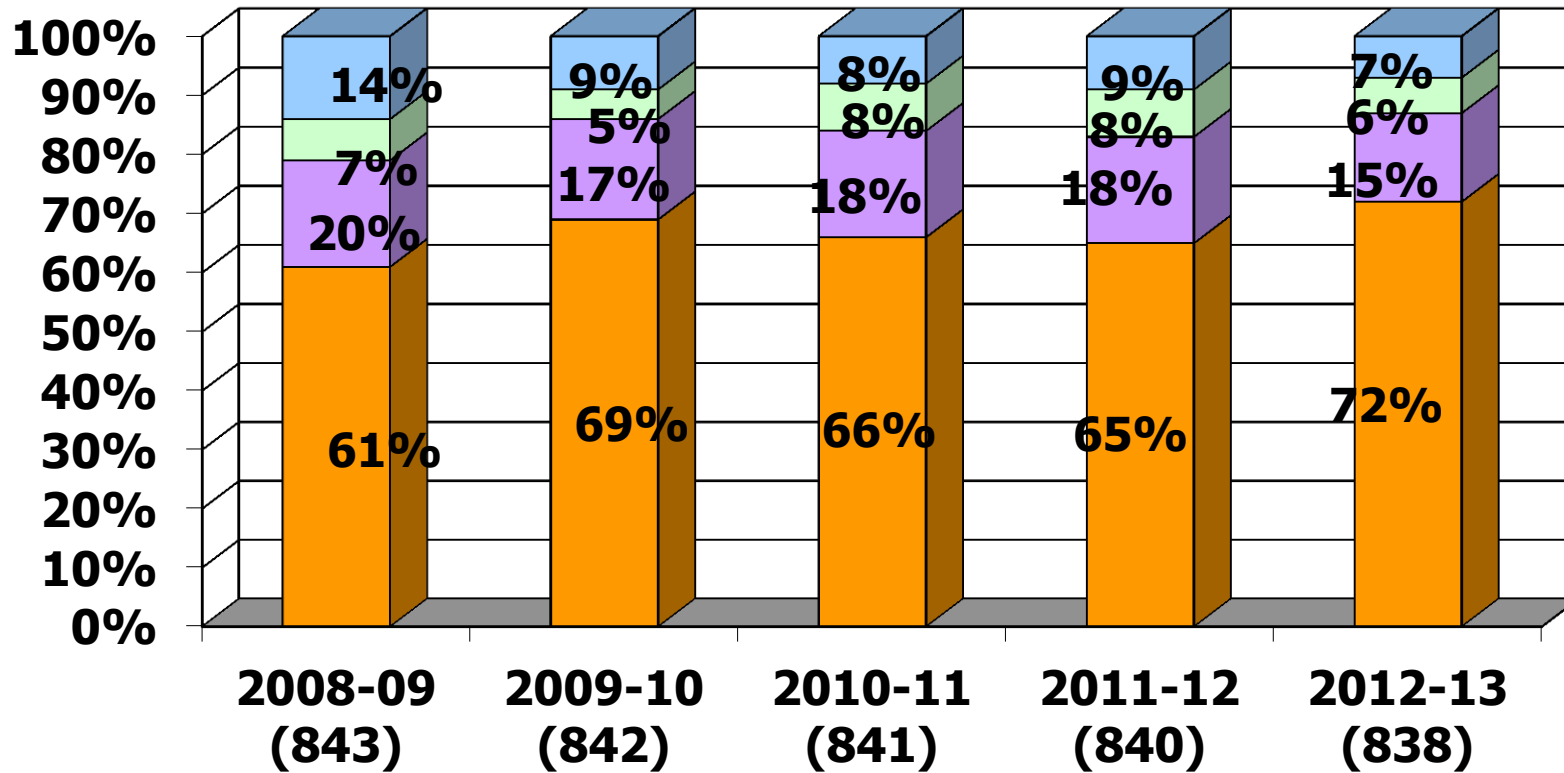
ACCREDITATION HISTORY GRAPHS	1-4
DEVIATION SUMMARY BY ACCREDITATION STATUS	5-7
ACCREDITATION STATUS RECOMMENDATIONS	8-42
ADVICE STATUS SUMMARY	43
DEFICIENCY STATUS SUMMARY	44
LIBRARY AND COUNSELING SUMMARY	45-47
MISASSIGNMENT SUMMARY	48-50
NON-LICENSED TEACHER SUMMARY	51

ACCREDITATION HISTORY GRAPHS

Montana Accreditation History

(All schools – public, state funded and private – are included)

All Schools



Regular

Reg w/Dev

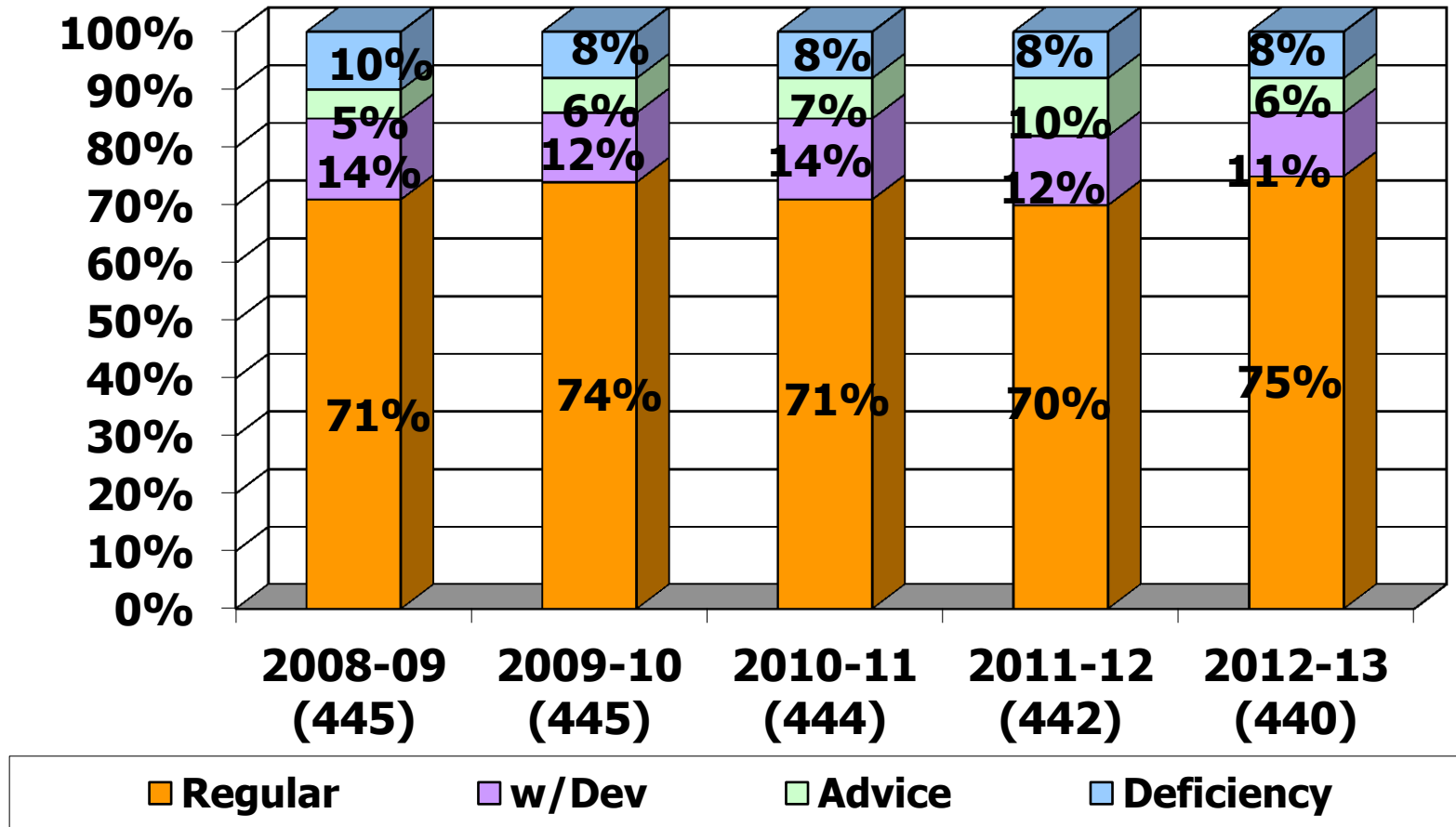
Advice

Deficiency

Montana Accreditation History

(All schools – public, state funded and private – are included)

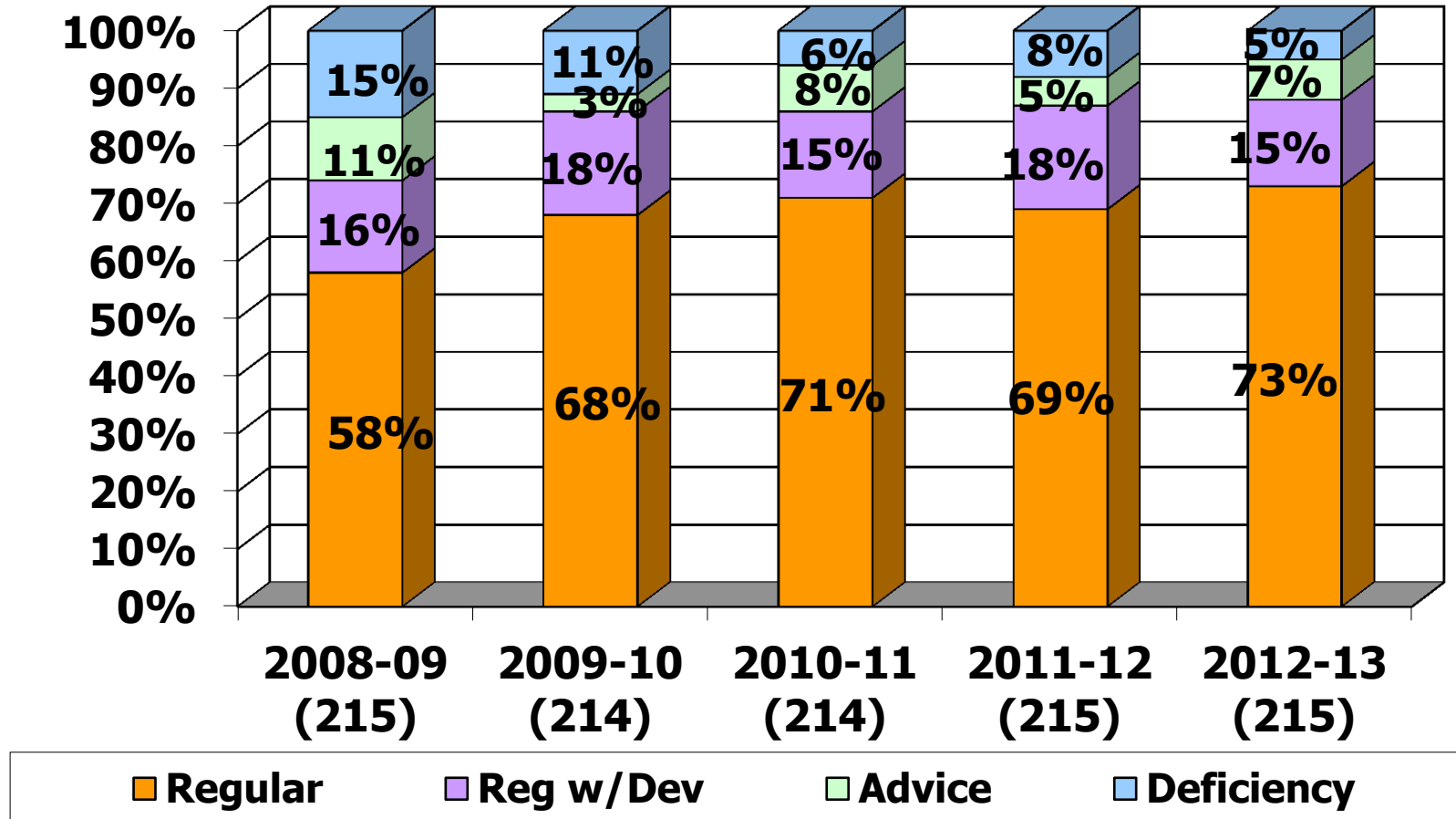
Elementary Schools



Montana Accreditation History

(All schools - public, state funded and private - are included)

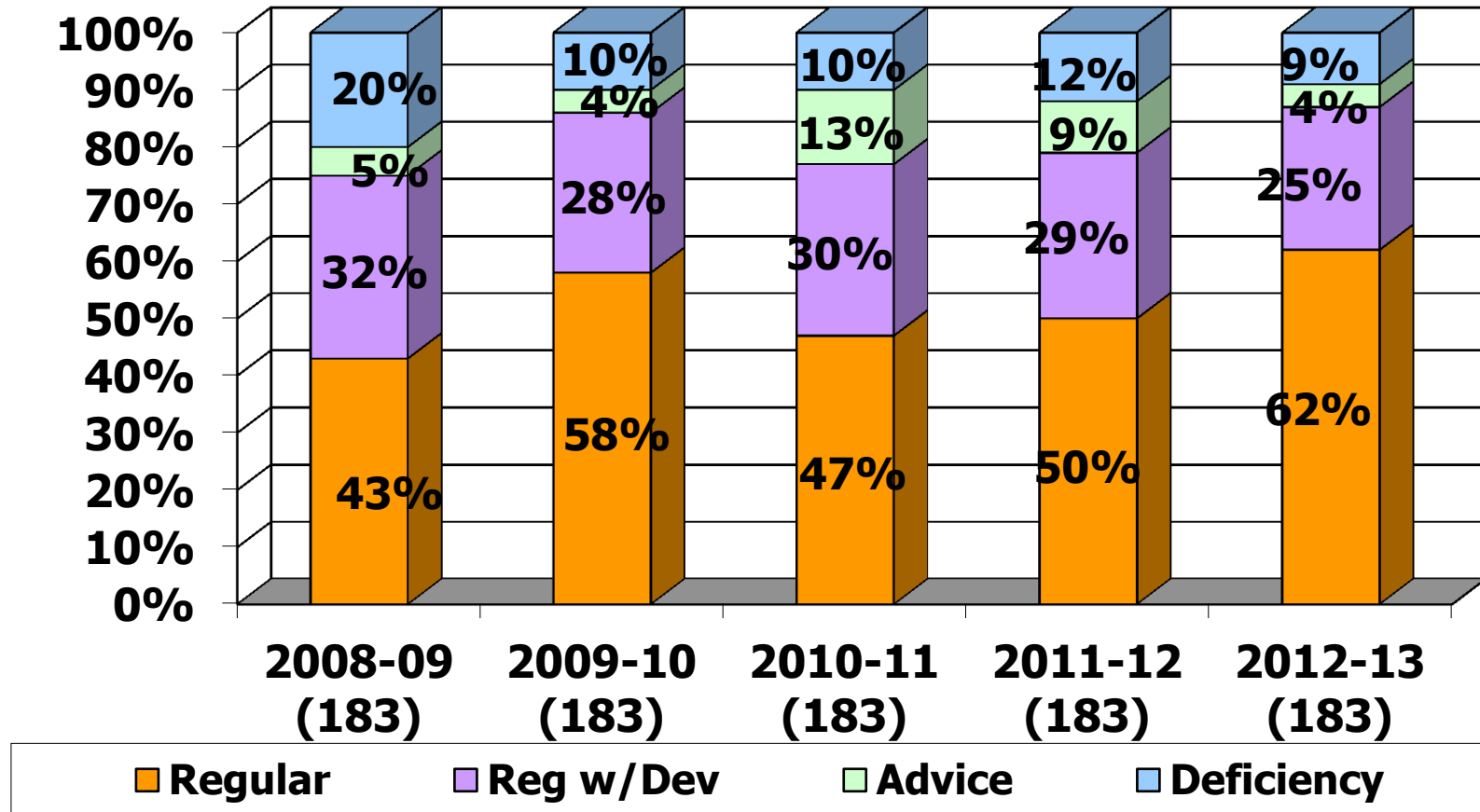
Middle Grade Schools



Montana Accreditation History

(All schools – public, state funded and private – are included)

High Schools



DEVIATION SUMMARY BY ACCREDITATION STATUS

2012-2013 Deviation Summary by Accreditation Status

Sector	Status	Grade Type	Total Number of Schools	Deviation Category						
				702-705 Administration	707 Non-licensed Teacher	708 Misassigned Teacher	709 Library/Media Services	710 Counseling Services	712-713 Class Size (represents total number of classrooms overloaded)	902-904 Basic Program
PUBLIC										
	REGULAR	Elementary	331							
		Middle School	156							
		High School	104							
	REGULAR Total		591							
	REGULAR WITH MINOR DEVIATION	Elementary	46	5		10	2	13	56	
		Middle School	33	2		21	8	5	41	
		High School	45	1		45	8	2	22	
	REGULAR WITH MINOR DEVIATION Total		124	8	0	76	18	20	119	0
	ADVICE	Elementary	28	5		4	11	11	46	
		Middle School	14	3		4	4	1	6	
		High School	8	1		4	1	1		1
	ADVICE Total		50	9	0	12	16	13	52	1
	DEFICIENCY	Elementary	31	1	8	2	9	10	59	4
		Middle School	11		6	0	6			
		High School	11	1	7	8	3	1	12	2
	DEFICIENCY Total		53	2	21	10	18	11	71	6
	Grand Total		818	19	21	98	52	44	242	1

2012-2013 Deviation Summary by Accreditation Status

Sector	Status	Grade Type	Total Number of Schools	Deviation Category							
				702-705 Administration	707 Non-licensed Teacher	708 Misassigned Teacher	709 Library/Media Services	710 Counseling Services	712-713 Class Size (represents total number of classrooms overloaded)	902-904 Basic Program	Other
NONPUBLIC											
	REGULAR	Elementary									
		Middle School	1								
		High School	9								
	REGULAR Total		10								
	REGULAR WITH MINOR DEVIATION	Elementary	1					1			
		Middle School									
		High School	1			1					
	REGULAR WITH MINOR DEVIATION Total		2			1		1			
	ADVICE	Elementary									
		Middle School									
		High School									
	ADVICE Total		0								
	DEFICIENCY	Elementary									
		Middle School									
		High School	2			1					1
	DEFICIENCY Total		2			1					1
	Grand Total		14			1		1			1

2012-2013 Deviation Summary by Accreditation Status

Sector	Status	Grade Type	Total Number of Schools	Deviation Category						
				702-705 Administration	707 Non-licensed Teacher	708 Misassigned Teacher	709 Library/Media Services	710 Counseling Services	712-713 Class Size (represents total number of classrooms overloaded)	902-904 Basic Program
STATE-FUNDED										
	REGULAR	Elementary	1							
		Middle School								
		High School	1							
	REGULAR Total		2							
	REGULAR WITH MINOR DEVIATION	Elementary								
		Middle School								
		High School								
	REGULAR WITH MINOR DEVIATION Total									
	ADVICE	Elementary								
		Middle School								
		High School								
	ADVICE Total		0			0				
	DEFICIENCY	Elementary	2		1	2	1			
		Middle School								
		High School	2		1	2	1			
	DEFICIENCY Total		4		2	4	2			
	Grand Total		6		2	4	2			

ACCREDITATION STATUS RECOMMENDATIONS

Definitions and Explanation of Report Notations

Summary of **Basic Accreditation Criteria** (Reference: Montana School Accreditation Standards and Procedures Manual, Appendix E):

Regular or Regular with Deviations	Advice	Deficiency
<ul style="list-style-type: none"> • Applicable accreditation standards are met • Licensed staff is appropriately endorsed and assigned • School programs and resources are adequate • When the school meets the regular accreditation standards with only minor deviations – Regular w/Deviations 	<ul style="list-style-type: none"> • Misassigned teacher – third occurrence • Non-endorsed administrators – first occurrence • Library and/or guidance services not present – first occurrence • Minimum programs are not offered – first occurrence • Non-endorsed counselor/librarians – second occurrence • Continuing deviations for three (3) consecutive years • Incomplete reports – first occurrence • Approved variance(s) not followed – first occurrence 	<ul style="list-style-type: none"> • Non-licensed staff – first occurrence • Misassigned teacher – fourth occurrence • Non-endorsed administrators – second occurrence • Library and/or guidance services not present – second occurrence • Library and/or guidance FTE requirements not met – third occurrence • Minimum programs are not offered – second occurrence • Non-endorsed counselor/librarians – fourth occurrence • Continuing deviations for four (4) consecutive years • Incomplete reports – second occurrence • Approved variance(s) not followed – second occurrence

Full-Time Equivalent (FTE) – staffing requirements may only represent a part of a full time staff member’s time.

Occurrence – the number of years a particular deviation has repeated continuously

Examples of report notations for number of occurrences of a deviation:

(1st), (2nd), (3rd), etc., first year, second year, third year, etc.

Non-licensed - A non-licensed teacher as noted in the report is one whose license was not valid *as of December 1, 2012*. When a teacher’s license was issued after that date, it is noted with a double asterisk, e.g., 1 Teacher **. However, the deviation still remains in effect.

Process Comment: During the Annual Data Collection (ADC) data entry, preliminary accreditation reports are available to schools/districts/counties. This allows the opportunity to correct errors or to notify the Office of Public Instruction (OPI) of corrections already undertaken.

2012-2013 Accreditation Status Recommendation

County/System	School	Accreditation Status	Corrective Plan Required	702-705 Administration	707 Non-licensed Teacher/Specialist	708 Teaching Assignments	709 Library Media Services	710 Counseling Services	712-713 Class Size	901-904 Basic Education Program	Other
Beaverhead											
Beaverhead Co High School	Beaverhead Co High School	REGULAR									
Dillon Elementary	Dillon Middle School	REGULAR WITH MINOR DEVIATION		Sup FTE (1st)							
	Parkview School	REGULAR WITH MINOR DEVIATION		Sup FTE (1st)							
Grant Elementary	Grant School	REGULAR									
Jackson Elementary	Jackson School	REGULAR									
Lima K-12 Schools	Lima 7-8	REGULAR WITH MINOR DEVIATION	YES			1 Teacher (1st)					
	Lima High School	REGULAR WITH MINOR DEVIATION	YES			1 Teacher (2nd)					
	Lima School	REGULAR									
Polaris Elementary	Polaris School	REGULAR									
Reichle Elementary	Reichle School	REGULAR									
Wisdom Elementary	Wisdom School	REGULAR									
Wise River Elementary	Wise River School	REGULAR									
Big Horn											
Hardin Public Schools	Crow Agency School	REGULAR									
	Fort Smith School	REGULAR									
	Hardin High School	REGULAR									
	Hardin Intermediate	REGULAR									
	Hardin Middle School	REGULAR									
	Hardin Primary	REGULAR									
Lodge Grass Public Schls	Lodge Grass 7-8	REGULAR									
	Lodge Grass High School	REGULAR									
	Lodge Grass School	REGULAR WITH MINOR DEVIATION	YES			1 Teacher (1st)					
Pryor Public Schools	Plenty Coups High School	ADVICE	YES							No Art Class Offered.	
	Pryor 7-8	REGULAR									
	Pryor Elem School	REGULAR									
Spring Creek Elementary	Spring Creek School	REGULAR									
Wyola Elementary	Wyola 7-8	REGULAR									
	Wyola School	REGULAR WITH MINOR DEVIATION							1 Class (1st)		
Bear Paw Elementary	Bear Paw School	REGULAR									

2012-2013 Accreditation Status Recommendation

County/System	School	Accreditation Status	Corrective Plan Required	702-705 Administration	707 Non-licensed Teacher/Specialist	708 Teaching Assignments	709 Library Media Services	710 Counseling Services	712-713 Class Size	901-904 Basic Education Program	Other
Blaine											
Chinook Public Schools	Chinook 7-8	REGULAR									
	Chinook High School	REGULAR									
	Hartland Elementary School	REGULAR									
	Meadowlark School	REGULAR									
Cleveland-Lone Tree Elem	Cleveland School	REGULAR									
Harlem Public Schools	Harlem 7-8	REGULAR									
	Harlem Elementary School	REGULAR									
	Harlem High School	REGULAR									
Hays-Lodge Pole K-12 Schls	Hays-Lodge Pole 7-8	REGULAR									
	Hays-Lodge Pole High Sch	REGULAR									
	Lodge Pole School	REGULAR WITH MINOR DEVIATION		Prin FTE (1st)							
North Harlem Colony Elem	North Harlem Elementary	REGULAR									
Turner Public Schools	Turner 7-8	REGULAR									
	Turner High School	REGULAR									
	Turner School	REGULAR									
Zurich Elementary	Zurich School	REGULAR									
Broadwater											
Townsend K-12 Schools	Broadwater High School	REGULAR									
	Cecelia Hazelton School	REGULAR									
	Townsend 7-8	REGULAR									
Carbon											
Belfry K-12 Schools	Belfry 7-8	REGULAR									
	Belfry High School	REGULAR									
	Belfry School	REGULAR									
Carbon											
Bridger K-12 Schools	Bridger 7-8	REGULAR WITH MINOR DEVIATION							2 Classes (2nd)		
	Bridger Elementary School	REGULAR									
	Bridger High School	REGULAR WITH MINOR DEVIATION	YES			1 Teacher (1st)					
Fromberg K-12	Fromberg 7-8	REGULAR									
	Fromberg High School	REGULAR									
	Fromberg School	REGULAR									
Joliet Public Schools	Joliet 7-8	REGULAR									
	Joliet High School	REGULAR WITH MINOR DEVIATION	YES			1 Teacher (1st)					
	Joliet School	REGULAR									

2012-2013 Accreditation Status Recommendation

County/System	School	Accreditation Status	Corrective Plan Required	702-705 Administration	707 Non-licensed Teacher/Specialist	708 Teaching Assignments	709 Library Media Services	710 Counseling Services	712-713 Class Size	901-904 Basic Education Program	Other
Carbon											
Luther Elementary	Luther School	DEFICIENCY	YES		1 Teacher (1st)						
Red Lodge Public Schools	Mountain View School	REGULAR									
	Red Lodge High School	REGULAR									
	Roosevelt Junior High	REGULAR									
Roberts K-12 Schools	Roberts 7-8	REGULAR									
	Roberts High School	REGULAR									
	Roberts School	REGULAR									
Carter											
Alzada Elementary	Alzada School	DEFICIENCY	YES								Required reporting not complete
Ekalaka Public Schools	Carter County High School	REGULAR									
	Ekalaka 7-8	REGULAR									
	Ekalaka Elementary School	REGULAR									
Hawks Home Elementary	Hammond School	REGULAR									
	Hawks Home School	REGULAR									
Cascade											
Belt Public Schools	Belt 7-8	REGULAR									
	Belt High School	REGULAR									
	Belt School	REGULAR									
	Pleasant Valley School	REGULAR									
Cascade Public Schools	Cascade 7-8	REGULAR									
	Cascade High School	REGULAR									
	Cascade School	REGULAR									
Centerville Public Schls	Big Stone School	REGULAR									
	Centerville 7-8	ADVICE	YES			1 Teacher (3rd)					
	Centerville High School	ADVICE	YES			1 Teacher (3rd)					
	Centerville School	REGULAR WITH MINOR DEVIATION							2 Classes (1st)		
Great Falls Public Schls	C M Russell High School	REGULAR									
	Chief Joseph School	REGULAR									
	East Middle School	ADVICE	YES						5 Classes (3rd)		
	Great Falls High School	REGULAR									
	Lewis & Clark School	REGULAR									

2012-2013 Accreditation Status Recommendation

County/System	School	Accreditation Status	Corrective Plan Required	702-705 Administration	707 Non-licensed Teacher/Specialist	708 Teaching Assignments	709 Library Media Services	710 Counseling Services	712-713 Class Size	901-904 Basic Education Program	Other
Cascade											
Great Falls Public Schls	Lincoln School	REGULAR									
	Longfellow School	ADVICE	YES					Endorsement (2nd)			
	Loy School	REGULAR									
	Meadow Lark School	REGULAR									
	Morningside School	REGULAR									
	Mountain View School	REGULAR									
	North Middle School	REGULAR									
	Riverview School	REGULAR									
	Roosevelt School	REGULAR									
	Sacajawea School	REGULAR									
	Sunnyside School	REGULAR									
	Valley View School	REGULAR									
	West Elementary	REGULAR									
	Whittier School	REGULAR									
Sun River Valley Pub Schls	Cascade Colony School	REGULAR									
	Fort Shaw Elem School	REGULAR									
	Simms High School	REGULAR									
	Sun River Middle School	REGULAR									
Ulm Elementary	Fairhaven Colony	DEFICIENCY	YES					Endorsement (3rd)			
	Ulm 7-8	ADVICE	YES					Endorsement (3rd)			
	Ulm School	DEFICIENCY	YES					Endorsement (3rd)			
Vaughn Elementary	Vaughn 7-8	REGULAR									
	Vaughn School	REGULAR									
Chouteau											
Benton Lake Elementary	Benton Lake School	REGULAR									
Big Sandy Public Schools	Big Sandy 7-8	REGULAR									
	Big Sandy High School	REGULAR WITH MINOR DEVIATION	YES			2 Teachers (1st;2nd)					
	F E Miley School	REGULAR									

2012-2013 Accreditation Status Recommendation

County/System	School	Accreditation Status	Corrective Plan Required	702-705 Administration	707 Non-licensed Teacher/Specialist	708 Teaching Assignments	709 Library Media Services	710 Counseling Services	712-713 Class Size	901-904 Basic Education Program	Other
Chouteau											
	Carter Elementary	Carter School	REGULAR								
	Fort Benton Public Schls	Fort Benton 7-8	REGULAR								
		Fort Benton High School	REGULAR								
		Fort Benton School	REGULAR WITH MINOR DEVIATION						1 Class (1st)		
	Geraldine Public Schools	Geraldine 7-8	DEFICIENCY	YES	1 Teacher (1st)						
		Geraldine High School	DEFICIENCY	YES	1 Teacher (1st)						
		Geraldine School	REGULAR								
	Highwood Public Schools	Highwood High School	REGULAR								
		Highwood Middle School	REGULAR								
		Highwood School	REGULAR								
	Knees Elementary	Knees School	REGULAR								
Custer											
	Cottonwood Elementary	Knowlton School	REGULAR								
	Kinsey Elementary	Kinsey School	REGULAR								
	Kircher Elementary	Kircher School	REGULAR								
	Miles City Public Schools	Custer Co District High	REGULAR								
		Garfield School	REGULAR								
		Highland Park School	REGULAR								
		Jefferson School	REGULAR								
		Lincoln School	REGULAR								
		Washington 7-8	REGULAR WITH MINOR DEVIATION	YES		1 Teacher (1st)					
	S H Elementary	S H School	REGULAR								
	S Y Elementary	S Y School	REGULAR								
	Spring Creek Elementary	Spring Creek School	REGULAR								
	Trail Creek Elementary	Riverview School	REGULAR								
Daniels											
	Scobey K-12 Schools	Scobey 7-8	REGULAR WITH MINOR DEVIATION				Endorsement (1st)				
		Scobey High School	REGULAR WITH MINOR DEVIATION				Endorsement (1st)				
		Scobey School	REGULAR WITH MINOR DEVIATION				Endorsement (1st)				

2012-2013 Accreditation Status Recommendation

County/System	School	Accreditation Status	Corrective Plan Required	702-705 Administration	707 Non-licensed Teacher/Specialist	708 Teaching Assignments	709 Library Media Services	710 Counseling Services	712-713 Class Size	901-904 Basic Education Program	Other
Dawson											
	Bloomfield Elementary	Bloomfield School	REGULAR								
	Deer Creek Elementary	Deer Creek School	REGULAR								
	Glendive Public Schools	Dawson High School	REGULAR								
		Jefferson School	ADVICE				FTE (2nd)				
		Lincoln School	ADVICE				FTE (2nd)				
		Washington Middle School	REGULAR								
	Lindsay Elementary	Lindsay School	REGULAR								
	Richey Public Schools	Richey 7-8	REGULAR								
		Richey High School	REGULAR								
		Richey School	REGULAR								
Deer Lodge											
	Anaconda Public Schools	Anaconda High School	REGULAR								
		Fred Moodry 7-8	REGULAR								
		Lincoln School	REGULAR								
		W K Dwyer School	REGULAR								
Fallon											
	Baker K-12 Schools	Baker 7-8	REGULAR								
		Baker High School	REGULAR								
		Lincoln School	REGULAR								
		Longfellow School	REGULAR								
	Plevna K-12 Schools	Plevna 7-8	REGULAR								
		Plevna High School	REGULAR WITH MINOR DEVIATION	YES		1 Teacher (1st)					
		Plevna School	REGULAR								
Fergus											
	Ayers Elementary	Ayers School	REGULAR								
	Deerfield Elementary	Deerfield School	REGULAR								
	Denton Public Schools	Denton 7-8	REGULAR								
		Denton High School	REGULAR WITH MINOR DEVIATION	YES		1 Teacher (1st)					
		Denton School	REGULAR								
	Grass Range Public Schls	Grass Range 7-8	REGULAR								
		Grass Range High School	REGULAR								
		Grass Range School	REGULAR								
	King Colony Elementary	King Colony School	REGULAR								
	Lewistown Public Schools	Fergus High School	REGULAR								

2012-2013 Accreditation Status Recommendation

County/System	School	Accreditation Status	Corrective Plan Required	702-705 Administration	707 Non-licensed Teacher/Specialist	708 Teaching Assignments	709 Library Media Services	710 Counseling Services	712-713 Class Size	901-904 Basic Education Program	Other
Fergus											
Lewistown Public Schools	Garfield School	REGULAR									
	Highland Park School	REGULAR									
	Lewis & Clark School	REGULAR									
	Lewistown 7-8	REGULAR									
Moore Public Schools	Moore 7-8	REGULAR									
	Moore High School	REGULAR WITH MINOR DEVIATION	YES			1 Teacher (2nd)					
	Moore School	REGULAR									
Roy K-12 Schools	Roy 7-8	REGULAR									
	Roy High School	REGULAR WITH MINOR DEVIATION	YES			1 Teacher (1st)					
	Roy School	REGULAR									
Spring Creek Colony Elem	Spring Creek Colony Schl	REGULAR									
Winifred K-12 Schools	Winifred 7-8	REGULAR									
	Winifred High School	REGULAR									
	Winifred School	REGULAR									
Flathead											
Bigfork Public Schools	Bigfork 7-8	REGULAR									
	Bigfork Elementary	REGULAR									
	Bigfork High School	REGULAR									
Cayuse Prairie Elementary	Cayuse Prairie 7-8	REGULAR WITH MINOR DEVIATION					Endorsement (1st)				
	Cayuse Prairie School	REGULAR WITH MINOR DEVIATION					Endorsement (1st)				
Columbia Falls Pub Schls	Columbia Falls High Schl	REGULAR									
	Columbia Falls Jr HS	REGULAR									
	Glacier Gateway Elem	REGULAR									
	Ruder Elementary	REGULAR									
Creston Elementary	Creston School	REGULAR									
Deer Park Elementary	Deer Park 7-8	DEFICIENCY	YES				No Services (2nd)				
	Deer Park School	DEFICIENCY	YES				No Services (2nd)				
Evergreen Elementary	East Evergreen School	REGULAR									
	Evergreen 5-6 School	REGULAR									
	Evergreen 7-8	REGULAR									

2012-2013 Accreditation Status Recommendation

County/System	School	Accreditation Status	Corrective Plan Required	702-705 Administration	707 Non-licensed Teacher/Specialist	708 Teaching Assignments	709 Library Media Services	710 Counseling Services	712-713 Class Size	901-904 Basic Education Program	Other
Flathead											
Fair-Mont-Egan Elementary	Fair-Mont-Egan 7-8	REGULAR WITH MINOR DEVIATION					Endorsement (1st)				
	Fair-Mont-Egan School	REGULAR WITH MINOR DEVIATION					Endorsement (1st)				
Helena Flats Elementary	Helena Flats 7-8	REGULAR									
	Helena Flats School	REGULAR WITH MINOR DEVIATION	YES			1 Teacher (1st)					
Kalispell Public Schools	Cornelius Hedges School	DEFICIENCY	YES					FTE (3rd)	6 Classes (2nd)		
	Edgerton School	REGULAR WITH MINOR DEVIATION		Prin FTE (1st)							
	Elrod School	ADVICE	YES						9 Classes (3rd)		
	Flathead High School	DEFICIENCY	YES			1 Teacher (1st)			4 Classes (4th)		
	Glacier High School	REGULAR									
	Kalispell Middle School	ADVICE	YES						1 Class (3rd)		
	Lillian Peterson School	REGULAR									
	Russell School	REGULAR									
Kila Elementary	Kila 7-8	ADVICE	YES	Prin Endorsement (1st)							
	Kila School	ADVICE	YES	Prin Endorsement (1st)							
Marion Elementary	Marion 7-8	REGULAR									
	Marion School	REGULAR									
Olney-Bissell Elementary	Bissell 7-8	REGULAR									
	Bissell School	REGULAR									
Pleasant Valley Elem	Pleasant Valley School	REGULAR									
Smith Valley Elementary	Smith Valley 7-8	REGULAR									
	Smith Valley Primary Schl	REGULAR									
Somers Elementary	Lakeside Elementary School	REGULAR									
	Somers Middle School	REGULAR									

2012-2013 Accreditation Status Recommendation

County/System	School	Accreditation Status	Corrective Plan Required	702-705 Administration	707 Non-licensed Teacher/Specialist	708 Teaching Assignments	709 Library Media Services	710 Counseling Services	712-713 Class Size	901-904 Basic Education Program	Other
Flathead											
Swan River Elementary	Swan River 7-8	REGULAR									
	Swan River School	REGULAR									
West Glacier Elementary	West Glacier School	REGULAR									
West Valley Elementary	West Valley Middle School	REGULAR WITH MINOR DEVIATION	YES			2 Teachers (1st)					
	West Valley School	REGULAR									
Whitefish Public Schools	L A Muldown School	REGULAR WITH MINOR DEVIATION	YES						5 Classes (1st)		
	Whitefish High School	REGULAR									
	Whitefish Middle 5-8	REGULAR									
Gallatin											
Amsterdam Elementary	Amsterdam School	REGULAR									
Anderson Elementary	Anderson 7-8	REGULAR									
	Anderson School	REGULAR									
Belgrade Public Schools	Belgrade High School	REGULAR									
	Belgrade Intermediate	REGULAR									
	Belgrade Middle School	REGULAR WITH MINOR DEVIATION	YES			3 Teachers (2-1st; 1-2nd)					
	Heck/Quaw Elementary	REGULAR									
	Ridge View Elementary	REGULAR WITH MINOR DEVIATION		Prin FTE (1st)							
Big Sky K-12 Schools	Lone Peak High School	REGULAR									
	Ophir 7-8	REGULAR									
	Ophir Elementary School	REGULAR									
Bozeman Public Schools	Bozeman High School	REGULAR WITH MINOR DEVIATION							17 Classes (2nd)		
	Chief Joseph Middle School	REGULAR									
	Emily Dickinson School	REGULAR									
	Hawthorne School	REGULAR									
Bozeman Public Schools	Hyalite Elementary	DEFICIENCY	YES		1 Teacher (1st)		Endorsement (1st)				
	Irving School	REGULAR									
	Longfellow School	REGULAR									
	Morning Star School	REGULAR									
	Sacajawea Middle School	REGULAR WITH MINOR DEVIATION							29 Classes (2nd)		
	Whittier School	REGULAR									

2012-2013 Accreditation Status Recommendation

County/System	School	Accreditation Status	Corrective Plan Required	702-705 Administration	707 Non-licensed Teacher/Specialist	708 Teaching Assignments	709 Library Media Services	710 Counseling Services	712-713 Class Size	901-904 Basic Education Program	Other
Gallatin											
	Cottonwood Elementary	Cottonwood School	REGULAR								
	Gallatin Gateway Elem	Gallatin Gateway 7-8	REGULAR								
		Gallatin Gateway School	REGULAR								
	LaMotte Elementary	LaMotte 7-8	REGULAR								
		LaMotte School	REGULAR								
	Malmborg Elementary	Malmborg School	REGULAR								
	Manhattan Public Schools	Manhattan 7-8	REGULAR								
		Manhattan Elem	REGULAR								
		Manhattan H S	REGULAR								
	Monforton Elementary	Monforton 7-8	REGULAR								
		Monforton Primary	REGULAR								
		Monforton School	REGULAR								
	Pass Creek Elementary	Pass Creek School	REGULAR								
	Springhill Elementary	Springhill School	REGULAR								
	Three Forks Public Schls	Three Forks 7-8	REGULAR								
		Three Forks Elem School	REGULAR								
		Three Forks High School	ADVICE	YES		1 Teacher (3rd)					
	West Yellowstone K-12 Schls	West Yellowstone 7-8	REGULAR								
		West Yellowstone HS	REGULAR								
		West Yellowstone School	REGULAR								
	Willow Creek Public Schls	Willow Creek 7-8	REGULAR								
		Willow Creek High School	REGULAR								
		Willow Creek School	REGULAR								
Garfield											
	Cohagen Elementary	Cohagen School	REGULAR								
	Jordan Public Schools	Garfield Co Dist HS	REGULAR								
		Jordan 7-8	REGULAR								
		Jordan Elementary School	REGULAR								
	Kester Elementary	Kester School	REGULAR								
	Pine Grove Elementary	Pine Grove School	REGULAR								
	Ross Elementary	Ross School	REGULAR								
	Sand Springs Elementary	Sand Springs School	REGULAR								

2012-2013 Accreditation Status Recommendation

County/System	School	Accreditation Status	Corrective Plan Required	702-705 Administration	707 Non-licensed Teacher/Specialist	708 Teaching Assignments	709 Library Media Services	710 Counseling Services	712-713 Class Size	901-904 Basic Education Program	Other
Glacier											
Browning Public Schools	Babb School	REGULAR									
	Big Sky School	REGULAR									
	Browning Elementary	REGULAR									
	Browning High School	REGULAR									
	Browning Middle School	REGULAR WITH MINOR DEVIATION	YES			2 Teachers (1st)					
	Glendale School	REGULAR									
	K W Bergan School	REGULAR									
	Napi School	REGULAR									
	Vina Chattin School	REGULAR									
	Cut Bank Public Schools	Anna Jeffries Elementary	REGULAR								
Cut Bank High School		REGULAR									
Cut Bank Middle School		REGULAR									
Glacier Elementary School		REGULAR									
H C Davis Elementary		REGULAR									
Hidden Lake Elementary		REGULAR									
Horizon Elementary		REGULAR									
Zenith Elementary		REGULAR									
East Glacier Park Elem	East Glacier Park School	REGULAR									
Mountain View Elementary	Mountain View Elementary	REGULAR									
Golden Valley											
Lavina K-12 Schools	Lavina 7-8	REGULAR WITH MINOR DEVIATION	YES			1 Teacher (1st)	Endorsement (1st)				
	Lavina High School	REGULAR WITH MINOR DEVIATION	YES			2 Teachers (1-1st 1-2nd)	Endorsement (1st)				
	Lavina School	REGULAR WITH MINOR DEVIATION	YES			1 Teacher (1st)	Endorsement (1st)				
Ryegate K-12 Schools	Ryegate 7-8	REGULAR									
	Ryegate High School	REGULAR									
	Ryegate School	REGULAR									

2012-2013 Accreditation Status Recommendation

County/System	School	Accreditation Status	Corrective Plan Required	702-705 Administration	707 Non-licensed Teacher/Specialist	708 Teaching Assignments	709 Library Media Services	710 Counseling Services	712-713 Class Size	901-904 Basic Education Program	Other
Granite											
Drummond Public Schools	Drummond 7-8	REGULAR									
	Drummond High School	REGULAR									
	Drummond School	REGULAR									
Hall Elementary	Hall School	REGULAR									
Philipsburg K-12 Schools	Granite High School	REGULAR									
	Philipsburg 7-8	REGULAR									
	Philipsburg School	REGULAR									
Hill											
Box Elder Public Schools	Box Elder 7-8	REGULAR WITH MINOR DEVIATION	YES			1 Teacher (2nd)					
	Box Elder High School	REGULAR WITH MINOR DEVIATION	YES			1 Teacher (2nd)					
	Box Elder School	REGULAR									
Cottonwood Elementary	Cottonwood School	REGULAR									
Davey Elementary	Davey Elementary	REGULAR									
Gildford Colony Elem	Gildford Colony School	REGULAR									
Havre Public Schools	Havre High School	REGULAR									
	Havre Middle School	REGULAR									
	Highland Park School	REGULAR									
	Lincoln-McKinley School	REGULAR									
	Sunnyside School	REGULAR									
North Star Public Schools	North Star 7-8	REGULAR									
	North Star High School	REGULAR									
	North Star School	REGULAR									
Rocky Boy Public Schools	Rocky Boy 7-8	REGULAR									
	Rocky Boy High School	REGULAR									
	Rocky Boy School	REGULAR									
Jefferson											
Basin Elementary	Basin School	REGULAR									
Boulder Elementary	Boulder 7-8	REGULAR									
	Boulder Elementary School	REGULAR									
Cardwell Elementary	Cardwell School	REGULAR									
Clancy Elementary	Clancy 7-8	REGULAR									
	Clancy School	REGULAR									
Jefferson High School	Jefferson High School	REGULAR									
Montana City Elementary	Montana City Middle Schl	REGULAR									
	Montana City School	REGULAR									

2012-2013 Accreditation Status Recommendation

County/System	School	Accreditation Status	Corrective Plan Required	702-705 Administration	707 Non-licensed Teacher/Specialist	708 Teaching Assignments	709 Library Media Services	710 Counseling Services	712-713 Class Size	901-904 Basic Education Program	Other
Jefferson											
Whitehall Public Schools	Whitehall 7-8	REGULAR WITH MINOR DEVIATION	YES			1 Teacher (1st)					
	Whitehall Elementary	REGULAR									
	Whitehall High School	REGULAR									
Judith Basin											
Geysers Public Schools	Geysers 7-8	DEFICIENCY	YES				Endorsement (2rd)				
	Geysers High School	DEFICIENCY	YES				Endorsement (2rd)				
	Geysers School	DEFICIENCY	YES		1 Teacher (1st)		Endorsement (3rd)				
	Surprise Creek School	DEFICIENCY	YES		1 Teacher (1st)		Endorsement (3rd)				
Hobson K-12 Schools	Hobson 7-8	REGULAR									
	Hobson High School	REGULAR									
	Hobson School	REGULAR									
Stanford K-12 Schools	Stanford 7-8	REGULAR									
	Stanford High School	REGULAR									
	Stanford School	REGULAR									
Lake											
Arlee Public Schools	Arlee 7-8	REGULAR WITH MINOR DEVIATION		Sup FTE (1st)							
	Arlee Elementary	REGULAR WITH MINOR DEVIATION		Sup FTE (1st)							
	Arlee High School	REGULAR WITH MINOR DEVIATION		Sup FTE (1st)							
Charlo Public Schools	Charlo 7-8	REGULAR									
	Charlo Elementary	REGULAR WITH MINOR DEVIATION							1 Class (1st)		
	Charlo High School	ADVICE	YES			1 Teacher (3rd)					

2012-2013 Accreditation Status Recommendation

County/System	School	Accreditation Status	Corrective Plan Required	702-705 Administration	707 Non-licensed Teacher/Specialist	708 Teaching Assignments	709 Library Media Services	710 Counseling Services	712-713 Class Size	901-904 Basic Education Program	Other
Lake											
Polson Public Schools	Cherry Valley School	REGULAR									
	Linderman School	REGULAR WITH MINOR DEVIATION	YES			1 Teacher (1st)					
	Polson 5-6 School	REGULAR									
	Polson 7-8	REGULAR									
	Polson High School	REGULAR WITH MINOR DEVIATION							1 Class (1st)		
Ronan Public Schools	K William Harvey Elem	REGULAR									
	Pablo Elementary	REGULAR									
	Ronan High School	REGULAR									
	Ronan Middle School	REGULAR									
St Ignatius K-12 Schools	St Ignatius Elementary School	REGULAR									
	St Ignatius High School	REGULAR									
	St Ignatius Middle School	REGULAR									
Swan Lake-Salmon Elem	Salmon Prairie School	REGULAR									
Upper West Shore Elem	Dayton School	ADVICE	YES			1 Teacher (2nd)		No Services (1st)			
Valley View Elementary	Valley View School	REGULAR WITH MINOR DEVIATION	YES			1 Teacher (2nd)					
Lewis & Clark											
Auchard Creek Elementary	Auchard Creek School	REGULAR									
Augusta Public Schools	Augusta 7-8	REGULAR									
	Augusta Elementary School	REGULAR									
	Augusta High School	REGULAR									
East Helena Elementary	East Valley Middle School	REGULAR									
	Eastgate School	REGULAR WITH MINOR DEVIATION						FTE (1st)			
	Radley Elementary School	REGULAR WITH MINOR DEVIATION						FTE (1st)			
Helena Public Schools	Broadwater School	DEFICIENCY	YES					No Services (1st)	2 Classes (4th)		
	Bryant School	ADVICE	YES					No Services (1st)	4 Classes (3rd)		
	C R Anderson Middle Schl	REGULAR WITH MINOR DEVIATION					FTE (1st)				

2012-2013 Accreditation Status Recommendation

County/System	School	Accreditation Status	Corrective Plan Required	702-705 Administration	707 Non-licensed Teacher/Specialist	708 Teaching Assignments	709 Library Media Services	710 Counseling Services	712-713 Class Size	901-904 Basic Education Program	Other
Lewis & Clark											
Helena Public Schools	Capital High School	REGULAR WITH MINOR DEVIATION					FTE (1st)				
	Central School	REGULAR									
	Four Georgians School	REGULAR WITH MINOR DEVIATION						FTE (1st)			
	Hawthorne School	ADVICE	YES					No Services (1st)			
	Helena High School	DEFICIENCY	YES			3 Teachers (2-1st, 1-2nd)	FTE (1st)		8 Classes (5th)		
	Helena Middle School	ADVICE	YES				FTE (2nd)				
	Jefferson School	ADVICE	YES					No Services (1st)			
	Jim Darcy School	ADVICE	YES					No Services (1st)			
	Kessler Elementary School	REGULAR WITH MINOR DEVIATION						FTE (1st)			
	Rossiter School	ADVICE	YES					No Services (1st)			
	Smith School	ADVICE	YES					No Services (1st)			
	Warren School	ADVICE	YES					No Services (1st)			
Lincoln K-12 Schools	Lincoln 7-8	REGULAR									
	Lincoln Elementary School	REGULAR WITH MINOR DEVIATION	YES			2 Teachers (1st)					
	Lincoln High School	REGULAR									
Trinity Elementary	Trinity School	REGULAR									
Wolf Creek Elementary	Wolf Creek School	REGULAR									

2012-2013 Accreditation Status Recommendation

County/System	School	Accreditation Status	Corrective Plan Required	702-705 Administration	707 Non-licensed Teacher/Specialist	708 Teaching Assignments	709 Library Media Services	710 Counseling Services	712-713 Class Size	901-904 Basic Education Program	Other
Liberty											
Chester-Joplin-Inverness PS	Chester-Joplin-Inverness 7-8	REGULAR									
	Chester-Joplin-Inverness HS	REGULAR									
	Chester-Joplin-Inverness Schl	REGULAR									
	Riverview Elementary	REGULAR									
	Sage Creek Elementary	REGULAR									
Liberty Elementary	Liberty Elementary School	REGULAR									
Lincoln											
Eureka Public Schools	Eureka Elementary School	REGULAR									
	Eureka Middle School 5-8	REGULAR									
	Lincoln Co High School	REGULAR									
Fortine Elementary	Fortine 7-8	REGULAR									
	Fortine School	REGULAR									
Libby K-12 Schools	Libby Elementary School	REGULAR									
	Libby High School	REGULAR									
	Libby Middle School	REGULAR									
McCormick Elementary	McCormick School	DEFICIENCY	YES							Required reporting not completed	
Trego Elementary	Trego School	DEFICIENCY	YES							Required reporting not completed	
Troy Public Schools	Troy 7-8	ADVICE	YES	Sup Endorsement (1st)							
	Troy High School	ADVICE	YES	Sup Endorsement (1st)							
	W F Morrison School	ADVICE	YES	Sup Endorsement (1st)				2 Classes (3rd)			
Yaak Elementary	Yaak School	REGULAR									

2012-2013 Accreditation Status Recommendation

County/System	School	Accreditation Status	Corrective Plan Required	702-705 Administration	707 Non-licensed Teacher/Specialist	708 Teaching Assignments	709 Library Media Services	710 Counseling Services	712-713 Class Size	901-904 Basic Education Program	Other
Madison											
Alder-Upper Ruby Elem	Alder School	ADVICE	YES				No Services (1st)				
Ennis K-12 Schools	Ennis 7-8	ADVICE	YES			1 Teacher (3rd)					
	Ennis High School	ADVICE	YES			1 Teacher (3rd)					
	Ennis School	ADVICE	YES			1 Teacher (3rd)					
Harrison K-12 Schools	Harrison 7-8	REGULAR									
	Harrison High School	REGULAR WITH MINOR DEVIATION	YES			1 Teacher (1st)					
	Harrison School	REGULAR									
Sheridan Public Schools	Sheridan 7-8	ADVICE	YES				No Services (1st)				
	Sheridan Elementary Schl	DEFICIENCY	YES		1 Teacher (1st)		No Services (1st)				
	Sheridan High School	ADVICE	YES				No Services (1st)				
Twin Bridges K-12 Schools	Twin Bridges 7-8	REGULAR									
	Twin Bridges High School	REGULAR									
	Twin Bridges School	REGULAR									
McCone											
Circle Public Schools	Bo Peep School	REGULAR									
	Circle High School	REGULAR WITH MINOR DEVIATION	YES			1 Teacher (1st)					
	Redwater 7-8	REGULAR									
	Redwater School	REGULAR									
Vida Elementary	Prairie Elk Colony School	REGULAR									
	Vida School	REGULAR									
Meagher											
White Sul Spgs Pub Schls	White Sulphur Springs 7-8	ADVICE	YES			1 Teacher (3rd)					
	White Sulphur Springs El	DEFICIENCY	YES			1 Teacher (4th)					
	White Sulphur Springs HS	DEFICIENCY	YES			1 Teacher (5th)					

2012-2013 Accreditation Status Recommendation

County/System	School	Accreditation Status	Corrective Plan Required	702-705 Administration	707 Non-licensed Teacher/Specialist	708 Teaching Assignments	709 Library Media Services	710 Counseling Services	712-713 Class Size	901-904 Basic Education Program	Other
Mineral											
Alberton K-12 Schools	Alberton 7-8	REGULAR									
	Alberton High School	REGULAR									
	Alberton School	REGULAR									
St Regis K-12 Schools	St Regis 7-8	REGULAR									
	St Regis High School	REGULAR									
	St Regis School	REGULAR									
Superior K-12 Schools	Superior 7-8	DEFICIENCY	YES		1 Teacher (1st)						
	Superior Elementary	REGULAR									
	Superior High School	DEFICIENCY	YES		1 Teacher (1st)						
Missoula											
Bonner Elementary	Bonner 7-8	REGULAR									
	Bonner School	REGULAR									
Clinton Elementary	Clinton 7-8	REGULAR									
	Clinton School	REGULAR									
DeSmet Elementary	DeSmet 7-8	REGULAR									
	DeSmet School	REGULAR									
Frenchtown K-12 Schools	Frenchtown 7-8	REGULAR									
	Frenchtown Elementary School	REGULAR WITH MINOR DEVIATION							4 Classes (1st)		
	Frenchtown High School	REGULAR									
	Frenchtown Intermediate School	REGULAR									
Hellgate Elementary	Hellgate Middle School	REGULAR									
	Lower Grade Hellgate	REGULAR									
Lolo Elementary	Lolo Elementary	REGULAR									
	Lolo Middle School	REGULAR									
Missoula Co Public Schls	Big Sky High School	REGULAR WITH MINOR DEVIATION	YES			1 Teacher (2nd)					
	Chief Charlo School	REGULAR									
	Cold Springs School	REGULAR									
	Franklin School	REGULAR									
	Hawthorne School	REGULAR									
	Hellgate High School	REGULAR WITH MINOR DEVIATION	YES			2 Teachers (1st)					
	Lewis & Clark School	REGULAR									

2012-2013 Accreditation Status Recommendation

County/System	School	Accreditation Status	Corrective Plan Required	702-705 Administration	707 Non-licensed Teacher/Specialist	708 Teaching Assignments	709 Library Media Services	710 Counseling Services	712-713 Class Size	901-904 Basic Education Program	Other
Missoula											
Missoula Co Public Schls	Lowell School	REGULAR									
	Meadow Hill Middle School	REGULAR									
	Paxson School	REGULAR									
	Porter Middle School	REGULAR									
	Rattlesnake Elementary School	REGULAR									
	Russell School	REGULAR									
	Seeley-Swan High School	REGULAR									
	Sentinel High School	REGULAR									
	Washington Middle School	REGULAR									
	Potomac Elementary	Potomac 7-8	REGULAR WITH MINOR DEVIATION							1 Class (1st)	
	Potomac School	REGULAR									
Seeley Lake Elementary	Seeley Lake 7-8	REGULAR									
	Seeley Lake Elementary	REGULAR WITH MINOR DEVIATION						FTE (1st)			
Sunset Elementary	Sunset School	REGULAR									
Swan Valley Elementary	Swan Valley 7-8	REGULAR									
	Swan Valley School	REGULAR									
Target Range Elementary	Target Range 7-8	REGULAR									
	Target Range School	REGULAR									
Woodman Elementary	Woodman 7-8	REGULAR									
	Woodman School	REGULAR									
Musselshell											
Melstone Public Schools	Melstone 7-8	ADVICE	YES							Endorsement (2nd)	
	Melstone High School	ADVICE	YES							Endorsement (2nd)	
	Melstone School	ADVICE	YES							Endorsement (2nd)	
Roundup Public Schools	Central School	REGULAR									
	Roundup 7-8	REGULAR									
	Roundup H S	REGULAR									

2012-2013 Accreditation Status Recommendation

County/System	School	Accreditation Status	Corrective Plan Required	702-705 Administration	707 Non-licensed Teacher/Specialist	708 Teaching Assignments	709 Library Media Services	710 Counseling Services	712-713 Class Size	901-904 Basic Education Program	Other
Park											
Arrowhead Elementary	Arrowhead 7-8	REGULAR									
	Arrowhead School	REGULAR									
Cooke City Elementary	Cooke City School	REGULAR									
Gardiner Public Schools	Gardiner 7-8	DEFICIENCY	YES		1 Teacher (1st)						
	Gardiner High School	DEFICIENCY	YES		1 Teacher (1st)						
	Gardiner School	REGULAR									
Livingston Public Schools	B A Winans School	REGULAR WITH MINOR DEVIATION							4 Classes (1st)		
	East Side School	REGULAR									
	Park High School	DEFICIENCY	YES		1 Teacher (1st)	1 Teacher (2nd)	FTE (3rd)				
	Sleeping Giant Middle Sch	REGULAR									
Pine Creek Elementary	Pine Creek 7-8	REGULAR									
	Pine Creek School	REGULAR									
Shields Valley Pub Schls	Shields Valley 7-8	REGULAR									
	Shields Valley Elementary	REGULAR									
	Shields Valley High Schl	REGULAR WITH MINOR DEVIATION	YES			1 Teacher (1st)					
Springdale Elementary	Springdale School	REGULAR									
Petroleum											
Winnett K-12 Schools	Winnett 7-8	REGULAR									
	Winnett High School	REGULAR WITH MINOR DEVIATION	YES			1 Teacher (2nd)					
	Winnett School	REGULAR									
Phillips											
Dodson K-12	Dodson 7-8	REGULAR									
	Dodson High School	REGULAR									
	Dodson School	REGULAR									
Malta K-12 Schools	Loring Colony School	REGULAR									
	Malta 6-7-8	REGULAR									
	Malta High School	REGULAR									
	Malta K-5	REGULAR									

2012-2013 Accreditation Status Recommendation

County/System	School	Accreditation Status	Corrective Plan Required	702-705 Administration	707 Non-licensed Teacher/Specialist	708 Teaching Assignments	709 Library Media Services	710 Counseling Services	712-713 Class Size	901-904 Basic Education Program	Other
Phillips											
Saco Public Schools	Saco 7-8	REGULAR WITH MINOR DEVIATION	YES			1 Teacher (1st)	Endorsement (1st)				
	Saco High School	REGULAR WITH MINOR DEVIATION					Endorsement (1st)				
	Saco School	REGULAR WITH MINOR DEVIATION					Endorsement (1st)				
Whitewater K-12 Schools	Whitewater 7-8	REGULAR									
	Whitewater High School	REGULAR									
	Whitewater School	REGULAR									
Pondera											
Conrad Public Schools	Conrad High School	REGULAR WITH MINOR DEVIATION	YES			2 Teachers (1st)					
	Meadowlark School	REGULAR									
	Prairie View School	REGULAR									
	Utterback 6 School	REGULAR WITH MINOR DEVIATION	YES			1 Teacher (1st)					
	Utterback 7-8	REGULAR WITH MINOR DEVIATION	YES			1 Teacher (1st)					
Dupuyer Elementary	Dupuyer School	REGULAR									
Heart Butte K-12 Schools	Heart Butte 7-8	DEFICIENCY	YES		1 Teacher (1st)						
	Heart Butte Elementary	DEFICIENCY	YES	Prin FTE (1st)	1 Teacher (1st)						
	Heart Butte High School	DEFICIENCY	YES		1 Teacher (1st)	1 Teacher (1st)					
Miami Elementary	Miami School	REGULAR									
Valier Public Schools	Kingsbury Colony Attn Ctr	REGULAR									
	Valier 7-8	REGULAR									
	Valier High School	REGULAR									
	Valier School	REGULAR									
Powder River											
Biddle Elementary	Biddle School	REGULAR									
Broadus Public Schools	Broadus 7-8	ADVICE	YES			1 Teacher (3rd)					
	Broadus School	REGULAR									
	Powder River Co Dist High	REGULAR									
South Stacey Elementary	South Stacey School	REGULAR									

2012-2013 Accreditation Status Recommendation

County/System	School	Accreditation Status	Corrective Plan Required	702-705 Administration	707 Non-licensed Teacher/Specialist	708 Teaching Assignments	709 Library Media Services	710 Counseling Services	712-713 Class Size	901-904 Basic Education Program	Other
Powell											
	Avon Elementary	Avon School	REGULAR								
	Deer Lodge Elementary	E F Duvall 7-8	DEFICIENCY				FTE (3rd)				
		O D Speer School	ADVICE						3 Classes (3rd)		
	Elliston Elementary	Elliston School	REGULAR								
	Garrison Elementary	Garrison School	REGULAR								
	Gold Creek Elementary	Gold Creek School	REGULAR								
	Helmville Elementary	Helmville School	REGULAR								
	Ovando Elementary	Ovando School	REGULAR								
	Powell County High School	Powell County High School	REGULAR								
Prairie											
	Terry K-12 Schools	Terry High School	REGULAR								
		Terry Middle School	REGULAR								
		Terry School	REGULAR								
Ravalli											
	Corvallis K-12 Schools	Corvallis 7-8	REGULAR								
		Corvallis High School	REGULAR								
		Edna Thomas School	REGULAR								
		Quentin Brown Primary K-4	REGULAR								
	Darby K-12 Schools	Darby 7-8	REGULAR								
		Darby High School	REGULAR								
		Darby School	ADVICE				1 Teacher (1st)				
	Florence-Carlton K-12 Schls	Florence-Carlton 7-8	DEFICIENCY				FTE (3rd)				
		Florence-Carlton El Schl	REGULAR								
		Florence-Carlton HS	REGULAR WITH MINOR DEVIATION				FTE (1st)				
	Hamilton K-12 Schools	Daly School	REGULAR								
		Grantsdale School	REGULAR								
		Hamilton High School	REGULAR								
		Hamilton Middle School	REGULAR								
		Washington School	REGULAR WITH MINOR DEVIATION						11 Classes (1st)		
	Lone Rock Elementary	Lone Rock 7-8	REGULAR WITH MINOR DEVIATION				1 Teacher (2nd)				
		Lone Rock School	REGULAR								

2012-2013 Accreditation Status Recommendation

County/System	School	Accreditation Status	Corrective Plan Required	702-705 Administration	707 Non-licensed Teacher/Specialist	708 Teaching Assignments	709 Library Media Services	710 Counseling Services	712-713 Class Size	901-904 Basic Education Program	Other
Ravalli											
Stevensville Public Schls	Stevensville 7-8	REGULAR									
	Stevensville High School	REGULAR WITH MINOR DEVIATION	YES			1 Teacher (1st)					
	Stevensville K-6	REGULAR									
Victor K-12 Schools	Victor High School	REGULAR									
	Victor Middle School	REGULAR									
	Victor School	REGULAR									
Richland											
Brorson Elementary	Brorson School	REGULAR									
Fairview Public Schools	Fairview 7-8	REGULAR									
	Fairview High School	REGULAR WITH MINOR DEVIATION	YES			1 Teacher (1st)					
	Fairview School	REGULAR									
Lambert Public Schools	Lambert 7-8	REGULAR									
	Lambert High School	REGULAR									
	Lambert School	REGULAR									
Rau Elementary	Rau School	REGULAR									
Savage Public Schools	Savage 7-8	REGULAR WITH MINOR DEVIATION	YES			1 Teacher (1st)					
	Savage High School	REGULAR									
	Savage School	REGULAR									
Sidney Public Schools	Sidney Elementary	ADVICE	YES	Prin FTE (2nd)		1 Teacher (1st)					
	Sidney High School	REGULAR									
	Sidney Middle School	REGULAR									
Roosevelt											
Bainville K-12 Schools	Bainville 7-8	REGULAR									
	Bainville High School	REGULAR									
	Bainville School	REGULAR									
Brockton Public Schools	Barbara Gilligan 7-8	DEFICIENCY	YES		1 Teacher (1st)						
	Barbara Gilligan School	DEFICIENCY	YES		1 Teacher (1st)						
	Brockton High School	DEFICIENCY	YES		1 Teacher (1st)						

2012-2013 Accreditation Status Recommendation

County/System	School	Accreditation Status	Corrective Plan Required	702-705 Administration	707 Non-licensed Teacher/Specialist	708 Teaching Assignments	709 Library Media Services	710 Counseling Services	712-713 Class Size	901-904 Basic Education Program	Other
Roosevelt											
Culbertson Public Schools	Culbertson 7-8	REGULAR									
	Culbertson High School	REGULAR WITH MINOR DEVIATION	YES			1 Teacher (1st)					
	Culbertson School	REGULAR									
Froid Public Schools	Froid 7-8	REGULAR									
	Froid Elementary School	REGULAR									
	Froid High School	REGULAR									
Frontier Elementary	Frontier 7-8	REGULAR									
	Frontier School	REGULAR									
Poplar Public Schools	Poplar 5-6 School	ADVICE	YES	Sup Endorsement (1st)							
	Poplar 7-8	ADVICE	YES	Sup Endorsement (1st)							
	Poplar High School	DEFICIENCY	YES	Sup Endorsement (1st)	1 Teacher (1st)	1 Teacher (2nd)					
	Poplar School	ADVICE	YES	Sup Endorsement (1st)							
Wolf Point Public Schools	Northside School	REGULAR									
	Southside School	REGULAR									
	Wolf Point 7-8	REGULAR									
	Wolf Point High School	REGULAR WITH MINOR DEVIATION	YES			1 Teacher (1st)					
Rosebud											
Ashland Elementary	Ashland 7-8	REGULAR									
	Ashland School	REGULAR WITH MINOR DEVIATION	YES			1 Teacher (1st)					
Birney Elementary	Birney School	REGULAR									
Colstrip Public Schools	Colstrip High School	REGULAR									
	Frank Brattin Middle Schl	DEFICIENCY	YES		1 Teacher (1st)						
	Pine Butte Elementary Sch	ADVICE	YES				FTE (2nd)				
Forsyth Public Schools	Forsyth 7-8	REGULAR									
	Forsyth Elementary School	REGULAR									
	Forsyth High School	REGULAR									

2012-2013 Accreditation Status Recommendation

County/System	School	Accreditation Status	Corrective Plan Required	702-705 Administration	707 Non-licensed Teacher/Specialist	708 Teaching Assignments	709 Library Media Services	710 Counseling Services	712-713 Class Size	901-904 Basic Education Program	Other
Rosebud											
Lame Deer Public Schools	Lame Deer 7-8	REGULAR WITH MINOR DEVIATION	YES			2 Teachers (1st)					
	Lame Deer High School	REGULAR									
	Lame Deer School	DEFICIENCY	YES		1 Teacher (1st)						
Rosebud Public Schools	Rosebud 7-8	REGULAR WITH MINOR DEVIATION	YES			1 Teacher (1st)					
	Rosebud High School	REGULAR WITH MINOR DEVIATION	YES			1 Teacher (2nd)					
	Rosebud School	REGULAR									
Sanders											
Dixon Elementary	Dixon 7-8	REGULAR									
	Dixon Elementary	REGULAR									
Hot Springs K-12	Hot Springs 7-8	REGULAR									
	Hot Springs High School	REGULAR									
	Hot Springs School	REGULAR									
Noxon Public Schools	Noxon 7-8	REGULAR									
	Noxon High School	REGULAR									
	Noxon School	REGULAR									
Paradise Elementary	Paradise School	REGULAR									
Plains Public Schools	Plains 7-8	REGULAR WITH MINOR DEVIATION						Endorsement (1st)			
	Plains Elementary School	REGULAR									
	Plains High School	REGULAR WITH MINOR DEVIATION						Endorsement (1st)			
Thompson Falls Pub Schls	Thompson Falls 7-8	REGULAR									
	Thompson Falls Elem Schl	REGULAR WITH MINOR DEVIATION							2 Classes (1st)		
	Thompson Falls High Schl	REGULAR WITH MINOR DEVIATION	YES			1 Teacher (1st)					
Trout Creek Elementary	Trout Creek 7-8	REGULAR									
	Trout Creek School	REGULAR									

2012-2013 Accreditation Status Recommendation

County/System	School	Accreditation Status	Corrective Plan Required	702-705 Administration	707 Non-licensed Teacher/Specialist	708 Teaching Assignments	709 Library Media Services	710 Counseling Services	712-713 Class Size	901-904 Basic Education Program	Other
Sheridan											
Medicine Lake K-12 Schools	Medicine Lake 7-8	REGULAR									
	Medicine Lake High School	REGULAR									
	Medicine Lake School	REGULAR									
Plentywood K-12 Schools	Plentywood 7-8	REGULAR									
	Plentywood High School	REGULAR									
	Plentywood School	REGULAR									
Westby K-12 Schools	Westby 7-8	REGULAR									
	Westby High School	REGULAR									
	Westby School	REGULAR									
Silver Bow											
Butte Public Schools	Butte High School	REGULAR									
	East Middle School	REGULAR									
	Emerson School	REGULAR									
	Hillcrest School	REGULAR									
	Kennedy School	REGULAR WITH MINOR DEVIATION					Endorsement (1st)				
	Margaret Leary School	REGULAR									
	West Elementary School	REGULAR									
Divide Elementary	Whittier School	REGULAR									
	Divide School	REGULAR									
Melrose Elementary	Melrose School	REGULAR									
Ramsay Elementary	Ramsay 7-8	REGULAR									
	Ramsay School	REGULAR									
Stillwater											
Absarokee Public Schools	Absarokee 7-8	REGULAR									
	Absarokee High School	REGULAR									
	Absarokee School	REGULAR									
Columbus Public Schools	Columbus Elem School	REGULAR									
	Columbus High School	REGULAR									
	Columbus Middle School	REGULAR									
Fishtail Elementary	Fishtail School	REGULAR									
Molt Elementary	Molt School	REGULAR									
Nye Elementary	Nye School	REGULAR									
Park City Public Schools	Park City 7-8	REGULAR									
	Park City High School	REGULAR									
	Park City School	REGULAR									

2012-2013 Accreditation Status Recommendation

County/System	School	Accreditation Status	Corrective Plan Required	702-705 Administration	707 Non-licensed Teacher/Specialist	708 Teaching Assignments	709 Library Media Services	710 Counseling Services	712-713 Class Size	901-904 Basic Education Program	Other
Stillwater											
Rapelje Public Schools	Rapelje 7-8	REGULAR									
	Rapelje High School	REGULAR									
	Rapelje School	REGULAR									
Reed Point Public Schools	Reed Point 7-8	REGULAR WITH MINOR DEVIATION						FTE (1st)			
	Reed Point Elementary	REGULAR WITH MINOR DEVIATION						FTE (1st)			
	Reed Point High School	REGULAR WITH MINOR DEVIATION	YES			1 Teacher (1st)					
Sweet Grass											
Big Timber Elementary	Big Timber 7-8	REGULAR									
	Big Timber School	REGULAR									
Greycliff Elementary	Greycliff School	REGULAR									
McLeod Elementary	McLeod School	REGULAR									
Melville Elementary	Melville School	REGULAR									
Sweet Grass County HS	Sweet Grass Co High Schl	REGULAR									
Teton											
Bynum Elementary	Bynum School	REGULAR									
Choteau Public Schools	Choteau 7-8	REGULAR									
	Choteau High School	REGULAR WITH MINOR DEVIATION	YES			3 Teachers (1st)			1 Class (1st)		
	Choteau School	REGULAR									
Dutton/Brady K-12 Schools	Dutton/Brady Elementary	REGULAR									
	Dutton/Brady High School	REGULAR									
	Dutton/Brady Middle School	REGULAR									
	Midway Colony	REGULAR									
Fairfield Public Schools	Fairfield 7-8	REGULAR									
	Fairfield Elementary School	REGULAR									
	Fairfield High School	REGULAR WITH MINOR DEVIATION	YES			1 Teacher (1st)					
Golden Ridge Elementary	Golden Ridge School	REGULAR									
Greenfield Elementary	Greenfield 7-8	REGULAR									
	Greenfield School	REGULAR									
Pendroy Elementary	Pendroy School	REGULAR									
Power Public Schools	Power 7-8	REGULAR WITH MINOR DEVIATION								Endorsement (1st)	
	Power High School	REGULAR WITH MINOR DEVIATION								Endorsement (1st)	
	Power School	REGULAR WITH MINOR DEVIATION								Endorsement (1st)	

2012-2013 Accreditation Status Recommendation

County/System	School	Accreditation Status	Corrective Plan Required	702-705 Administration	707 Non-licensed Teacher/Specialist	708 Teaching Assignments	709 Library Media Services	710 Counseling Services	712-713 Class Size	901-904 Basic Education Program	Other
Toole											
Galata Elementary	Galata School	DEFICIENCY	YES								Required reporting not completed
Shelby Public Schools	Cam Rose School	REGULAR									
	Shelby 7-8	REGULAR									
	Shelby Elementary School	REGULAR									
	Shelby High School	REGULAR									
Sunburst K-12 Schools	Hillside Colony School	REGULAR WITH MINOR DEVIATION						Endorsement (1st)			
	Rimrock Colony School	REGULAR WITH MINOR DEVIATION						Endorsement (1st)			
	Sunburst Elementary	REGULAR WITH MINOR DEVIATION						Endorsement (1st)			
	Sunburst High School	REGULAR WITH MINOR DEVIATION	YES			2 Teachers (1st)					
	Sunburst Middle School	REGULAR WITH MINOR DEVIATION						Endorsement (1st)			
Treasure											
Hysham K-12 Schools	Hysham 7-8	REGULAR									
	Hysham High School	REGULAR WITH MINOR DEVIATION	YES			1 Teacher (1st)					
	Hysham School	REGULAR									
Valley											
Frazer Public Schools	Frazer 7-8	REGULAR									
	Frazer Elementary	REGULAR									
	Frazer High School	REGULAR									
Glasgow K-12 Schools	Glasgow 4-6 School	REGULAR									
	Glasgow 7-8	REGULAR WITH MINOR DEVIATION						Endorsement (1st)			
	Glasgow High School	REGULAR									
	R L Irle School	REGULAR WITH MINOR DEVIATION						Endorsement (1st)			

2012-2013 Accreditation Status Recommendation

County/System	School	Accreditation Status	Corrective Plan Required	702-705 Administration	707 Non-licensed Teacher/Specialist	708 Teaching Assignments	709 Library Media Services	710 Counseling Services	712-713 Class Size	901-904 Basic Education Program	Other
Valley											
Hinsdale Public Schools	Hinsdale 7-8	REGULAR									
	Hinsdale High School	REGULAR									
	Hinsdale School	REGULAR									
Lustre Elementary	Lustre School	DEFICIENCY	YES			1 Teacher (3rd)					
Nashua K-12 Schools	Nashua 7-8	REGULAR									
	Nashua High School	REGULAR									
	Nashua School	REGULAR									
Opheim K-12 Schools	Opheim 7-8	REGULAR WITH MINOR DEVIATION						Endorsement (1st)			
	Opheim High School	REGULAR WITH MINOR DEVIATION						Endorsement (1st)			
	Opheim School	REGULAR WITH MINOR DEVIATION						Endorsement (1st)			
Wheatland											
Harlowton Public Schools	Harlowton High School	REGULAR WITH MINOR DEVIATION	YES			5 Teachers (4-1st, 1-2nd)					
	Hillcrest 7-8	REGULAR WITH MINOR DEVIATION	YES			1 Teacher (1st)					
	Hillcrest School	REGULAR									
Judith Gap Public Schools	Judith Gap 7-8	REGULAR WITH MINOR DEVIATION	YES			1 Teacher (1st)					
	Judith Gap High School	REGULAR WITH MINOR DEVIATION	YES			2 Teachers (1st)					
	Judith Gap School	REGULAR WITH MINOR DEVIATION	YES			1 Teacher (1st)					
Shawmut Elementary	Shawmut School	REGULAR									
Wibaux											
Wibaux K-12 Schools	Wibaux 7-8	REGULAR									
	Wibaux Elementary School	REGULAR									
	Wibaux High School	REGULAR WITH MINOR DEVIATION	YES			1 Teacher (1st)					

2012-2013 Accreditation Status Recommendation

County/System	School	Accreditation Status	Corrective Plan Required	702-705 Administration	707 Non-licensed Teacher/Specialist	708 Teaching Assignments	709 Library Media Services	710 Counseling Services	712-713 Class Size	901-904 Basic Education Program	Other
Yellowstone											
Billings Public Schools	Alkali Creek School	REGULAR									
	Arrowhead School	DEFICIENCY	YES					FTE (1st)	5 Classes (5th)		
	Beartooth School	DEFICIENCY	YES				FTE (1st)	FTE (2nd)	5 Classes (4th)		
	Bench School	REGULAR									
	Big Sky Elementary	ADVICE	YES						3 Classes (3rd)		
	Billings Sr High School	REGULAR WITH MINOR DEVIATION							2 Classes (1st)		
	Billings West High School	REGULAR WITH MINOR DEVIATION	YES			1 Teacher (1st)			1 Class (1st)		
	Bitterroot School	REGULAR WITH MINOR DEVIATION							3 Classes (2nd)		
	Boulder School	DEFICIENCY	YES					FTE (5th)	5 Classes (5th)		
	Broadwater School	REGULAR WITH MINOR DEVIATION							5 Classes (1st)		
	Burlington School	REGULAR WITH MINOR DEVIATION						FTE (1st)			
	Castle Rock 7-8	REGULAR WITH MINOR DEVIATION	YES				FTE (1st)		2 Classes (1st)		
	Central Heights School	ADVICE	YES						7 Classes (3rd)		
	Eagle Cliffs Elementary	ADVICE	YES					FTE (2nd)	5 Classes (2nd)		
	Highland School	DEFICIENCY	YES					FTE (8th)			
	Lewis & Clark Middle School	REGULAR									
McKinley School	DEFICIENCY	YES						4 Classes (5th)			
Meadowlark School	REGULAR WITH MINOR DEVIATION							7 Classes (2nd)			
Miles Avenue School	DEFICIENCY	YES						7 Classes (4th)			
Newman School	DEFICIENCY	YES					FTE (5th)	2 Classes (2nd)			
Orchard School	DEFICIENCY	YES						9 Classes (4th)			

2012-2013 Accreditation Status Recommendation

County/System	School	Accreditation Status	Corrective Plan Required	702-705 Administration	707 Non-licensed Teacher/Specialist	708 Teaching Assignments	709 Library Media Services	710 Counseling Services	712-713 Class Size	901-904 Basic Education Program	Other
Yellowstone											
Billings Public Schools	Poly Drive School	DEFICIENCY	YES					FTE (8th)	2 Classes (3rd)		
	Ponderosa School	REGULAR									
	Riverside 7-8	ADVICE	YES				FTE (2nd)				
	Rose Park School	DEFICIENCY	YES				FTE (1st)	FTE (3rd)	2 Classes (1st)		
	Sandstone School	DEFICIENCY	YES					FTE (4th)	6 Classes (3rd)		
	Skyview High School	REGULAR WITH MINOR DEVIATION	YES			1 Teacher (2nd)					
	Washington School	DEFICIENCY	YES						4 Classes (6th)		
	Will James Middle School	REGULAR									
Blue Creek Elementary	Blue Creek School	REGULAR									
Broadview Public Schools	Broadview 7-8	REGULAR									
	Broadview High School	REGULAR									
	Broadview School	REGULAR									
Canyon Creek Elementary	Canyon Creek 7-8	REGULAR									
	Canyon Creek School	REGULAR									
Custer K-12 Schools	Custer 7-8	REGULAR									
	Custer High School	REGULAR									
	Custer School	REGULAR									
Elder Grove Elementary	Elder Grove 7-8	REGULAR									
	Elder Grove School	REGULAR									
Elysian Elementary	Elysian 7-8	REGULAR									
	Elysian School	REGULAR									
Huntley Project K-12 Schls	Huntley Project 7-8	REGULAR									
	Huntley Project Elem K-6	REGULAR									
	Huntley Project High Schl	REGULAR									
Independent Elementary	Independent School	REGULAR WITH MINOR DEVIATION						FTE (1st)			
Laurel Public Schools	Fred W Graff School	REGULAR									
	Laurel High School	REGULAR									
	Laurel Middle School	REGULAR									
	West School	ADVICE	YES						9 Classes (3rd)		

2012-2013 Accreditation Status Recommendation

County/System	School	Accreditation Status	Corrective Plan Required	702-705 Administration	707 Non-licensed Teacher/Specialist	708 Teaching Assignments	709 Library Media Services	710 Counseling Services	712-713 Class Size	901-904 Basic Education Program	Other
Yellowstone											
Lockwood Elementary	Lockwood Intermediate	REGULAR									
	Lockwood Middle School	REGULAR WITH MINOR DEVIATION							7 Classes (2nd)		
	Lockwood Primary	REGULAR WITH MINOR DEVIATION							10 Classes (2nd)		
Morin Elementary	Morin School	REGULAR									
Pioneer Elementary	Pioneer School	REGULAR									
Shepherd Public Schools	Shepherd 7-8	DEFICIENCY	YES				FTE & Endorsement (3rd & 1st)				
	Shepherd Elementary	ADVICE	YES						4 Classes (3rd)		
	Shepherd High School	REGULAR WITH MINOR DEVIATION					FTE & Endorsement (1st)				
Yellowstone Academy Elem	Yellowstone Academy Elem	REGULAR									

2012-2013 Accreditation Status Recommendation

County/System	School	Accreditation Status	Corrective Plan Required	702-705 Administration	707 Non-licensed Teacher/Specialist	708 Teaching Assignments	709 Library Media Services	710 Counseling Services	712-713 Class Size	901-904 Basic Education Program	Other
NONPUBLIC											
Big Horn											
North Cheyenne Trib Schools	Northern Cheyenne Trib El	REGULAR WITH MINOR DEVIATION					FTE (1st)				
	Northern Cheyenne Trib HS	REGULAR WITH MINOR DEVIATION	YES			1 Teacher (1st)					
	Northern Cheyenne Tribal 7-8	REGULAR									
Cascade											
Great Falls Cent Cath HS	Great Falls Cent Cath HS	REGULAR									
Flathead											
Summit Preparatory School	Summit Preparatory School	REGULAR									
Gallatin											
Manhattan Christian High	Manhattan Christian H S	DEFICIENCY	YES		1 Teacher (3rd)						
Mount Ellis Academy High	Mount Ellis Academy High	REGULAR									
Lake											
Two Eagle River Schools	Two Eagle River High Schl	REGULAR									
Missoula											
Loyola-Sacred Heart High	Loyola-Sacred Heart H S	REGULAR									
Valley Christian High Schl	Valley Christian H S	REGULAR									
Rosebud											
St Labre Schools	St Labre High School	REGULAR									
Silver Bow											
Butte Central High School	Butte Central High School	REGULAR									
Valley											
Lustre Christian High	Lustre Christian H S	DEFICIENCY	YES								Required reporting not completed
Yellowstone											
Billings Central H S	Billings Central Catholic HS	REGULAR									

2012-2013 Accreditation Status Recommendation

County/System	School	Accreditation Status	Corrective Plan Required	702-705 Administration	707 Non-licensed Teacher/Specialist	708 Teaching Assignments	709 Library Media Services	710 Counseling Services	712-713 Class Size	901-904 Basic Education Program	Other
STATE-FUNDED											
Dept of Corrections-Youth	Pine Hills Youth Corr Facil El	REGULAR									
	Pine Hills Youth Corr Facil HS	REGULAR									
	Riverside Youth Corr Facil El	DEFICIENCY	YES		1 Teacher (1st)	1 Teacher (1st)					
	Riverside Youth Corr Facil HS	DEFICIENCY	YES		1 Teacher (1st)	1 Teacher (1st)					
Mont Sch for Deaf & Blind	MT Sch For Deaf & Blnd El	DEFICIENCY	YES			1 Teacher (5th)		No Services (3rd)			
	MT Sch For Deaf & Blnd HS	DEFICIENCY	YES			1 Teacher (5th)		No Services (3rd)			

ADVICE STATUS SUMMARY

2012-2013 Advice Status Summary

Big Horn

Pryor Public Schools

Plenty Coups High School

Cascade

Centerville Public Schls

Centerville 7-8

Centerville High School

Great Falls Public Schls

East Middle School

Longfellow School

Ulm Elementary

Ulm 7-8

Dawson

Glendive Public Schools

Jefferson School

Lincoln School

Flathead

Kalispell Public Schools

Elrod School

Kalispell Middle School

Kila Elementary

Kila 7-8

Kila School

Gallatin

Three Forks Public Schls

Three Forks High School

Lake

Charlo Public Schools

Charlo High School

Upper West Shore Elem

Dayton School

Lewis & Clark

Helena Public Schools

Bryant School

Hawthorne School

Helena Middle School

Jefferson School

Jim Darcy School

Rossiter School

Smith School

Warren School

Lincoln

Troy Public Schools

Troy 7-8

Troy High School

W F Morrison School

Madison

Alder-Upper Ruby Elem

Alder School

Ennis K-12 Schools

Ennis 7-8

Ennis High School

Ennis School

Sheridan Public Schools

Sheridan 7-8

Sheridan High School

Meagher

White Sul Spgs Pub Schls

White Sulphur Springs 7-8

Musselshell

Melstone Public Schools

Melstone 7-8

Melstone High School

Melstone School

Powder River

Broadus Public Schools

Broadus 7-8

Powell

Deer Lodge Elementary

O D Speer School

Ravalli

Darby K-12 Schools

Darby School

Richland

Sidney Public Schools

Sidney Elementary

Roosevelt

Poplar Public Schools

Poplar 5-6 School

Poplar 7-8

Poplar School

Rosebud

Colstrip Public Schools

Pine Butte Elementary Sch

Yellowstone

Billings Public Schools

Big Sky Elementary

Central Heights School

Eagle Cliffs Elementary

Riverside 7-8

Laurel Public Schools

West School

Shepherd Public Schools

Shepherd Elementary

DEFICIENCY STATUS SUMMARY

2012-2013 Deficiency Status Summary

Carbon

Luther Elementary
Luther School

Carter

Alzada Elementary
Alzada School

Cascade

Ulm Elementary
Fairhaven Colony
Ulm School

Chouteau

Geraldine Public Schools
Geraldine 7-8
Geraldine High School

Flathead

Deer Park Elementary
Deer Park 7-8
Deer Park School
Kalispell Public Schools
Cornelius Hedges School
Flathead High School

Gallatin

Bozeman Public Schools
Hyalite Elementary

Judith Basin

Geyser Public Schools
Geyser 7-8
Geyser High School
Geyser School
Surprise Creek School

Lewis & Clark

Helena Public Schools
Broadwater School
Helena High School

Lincoln

McCormick Elementary
McCormick School
Trego Elementary
Trego School

Madison

Sheridan Public Schools
Sheridan Elementary Schl

Meagher

White Sul Spgs Pub Schls
White Sulphur Springs El
White Sulphur Springs HS

Mineral

Superior K-12 Schools
Superior 7-8
Superior High School

Park

Gardiner Public Schools
Gardiner 7-8
Gardiner High School
Livingston Public Schools
Park High School

Pondera

Heart Butte K-12 Schools
Heart Butte 7-8
Heart Butte Elementary
Heart Butte High School

Powell

Deer Lodge Elementary
E F Duvall 7-8

Ravalli

Florence-Carlton K-12 Schls
Florence-Carlton 7-8

Roosevelt

Brockton Public Schools
Barbara Gilligan 7-8
Barbara Gilligan School
Brockton High School

Poplar Public Schools

Poplar High School

Rosebud

Colstrip Public Schools
Frank Brattin Middle Schl

Lame Deer Public Schools

Lame Deer School

Toole

Galata Elementary
Galata School

Valley

Lustre Elementary
Lustre School

Yellowstone

Billings Public Schools
Arrowhead School
Beartooth School
Boulder School
Highland School
McKinley School
Miles Avenue School
Newman School
Orchard School
Poly Drive School
Rose Park School
Sandstone School
Washington School

Shepherd Public Schools

Shepherd 7-8

Nonpublic

Lustre Christian High

Lustre Christian H S

Manhattan Christian High

Manhattan Christian H S

State-funded

Dept of Corrections-Youth

Riverside Youth Corr Facil El
Riverside Youth Corr Facil HS

Mont Sch for Deaf & Blind

MT Sch For Deaf & Bld El
MT Sch For Deaf & Bld HS

LIBRARY AND COUNSELING SUMMARY

2012-2013 School Year Summary

County	System	School	School Program	Library Non-Endorsed (*Same teacher)	Library FTE	Library-No Services	Counselor Non-Endorsed (*Same teacher)	Counselor FTE	Counselor-No Services
Cascade									
	Great Falls Public Schls	Longfellow School	Elementary				√		
	Ulm Elementary	Fairhaven Colony	Elementary	√*					
		Ulm 7-8	Middle	√*					
		Ulm School	Elementary	√*					
Daniels									
	Scobey K-12 Schools	Scobey 7-8	Middle	√*					
		Scobey High School	High School	√*					
		Scobey School	Elementary	√*					
Dawson									
	Glendive Public Schools	Jefferson School	Elementary		√				
		Lincoln School	Elementary		√				
Flathead									
	Cayuse Prairie Elementary	Cayuse Prairie 7-8	Middle	√*					
		Cayuse Prairie School	Elementary	√*					
	Deer Park Elementary	Deer Park 7-8	Middle			√			
		Deer Park School	Elementary			√			
	Fair-Mont-Egan Elementary	Fair-Mont-Egan 7-8	Middle	√*					
		Fair-Mont-Egan School	Elementary	√*					
	Kalispell Public Schools	Cornelius Hedges School	Elementary					√	
Gallatin									
	Bozeman Public Schools	Hyalite Elementary	Elementary	√					
Golden Valley									
	Lavina K-12 Schools	Lavina 7-8	Middle	√*					
		Lavina High School	High School	√*					
		Lavina School	Elementary	√*					
Judith Basin									
	Geyser Public Schools	Geyser 7-8	Middle	√*					
		Geyser High School	High School	√*					
		Geyser School	Elementary	√*					
		Surprise Creek School	Elementary	√*					
Lake									
	Upper West Shore Elem	Dayton School	Elementary						√
Lewis & Clark									
	East Helena Elementary	Eastgate School	Elementary					√	
		Radley Elementary School	Elementary					√	
	Helena Public Schools	Broadwater School	Elementary						√
		Bryant School	Elementary						√
		C R Anderson Middle Schl	Middle		√				
		Capital High School	High School		√				
		Four Georgians School	Elementary					√	
		Hawthorne School	Elementary						√

2012-2013 School Year Summary

County	System	School	School Program	Library Non-Endorsed (*Same teacher)	Library FTE	Library-No Services	Counselor Non-Endorsed (*Same teacher)	Counselor FTE	Counselor-No Services
Lewis & Clark									
	Helena Public Schools	Helena High School	High School		√				
		Helena Middle School	Middle		√				
		Jefferson School	Elementary						√
		Jim Darcy School	Elementary						√
		Kessler Elementary School	Elementary					√	
		Rossiter School	Elementary						√
		Smith School	Elementary						√
		Warren School	Elementary						√
Madison									
	Alder-Upper Ruby Elem	Alder School	Elementary			√			
	Sheridan Public Schools	Sheridan 7-8	Middle			√			
		Sheridan Elementary Schl	Elementary			√			
		Sheridan High School	High School			√			
Missoula									
	Seeley Lake Elementary	Seeley Lake Elementary	Elementary					√	
Musselshell									
	Melstone Public Schools	Melstone 7-8	Middle				√*		
		Melstone High School	High School				√*		
		Melstone School	Elementary				√*		
Park									
	Livingston Public Schools	Park High School	High School		√				
Phillips									
	Saco Public Schools	Saco 7-8	Middle	√*					
		Saco High School	High School	√*					
		Saco School	Elementary	√*					
Powell									
	Deer Lodge Elementary	E F Duvall 7-8	Middle		√				
Ravalli									
	Florence-Carlton K-12 Schls	Florence-Carlton 7-8	Middle		√				
		Florence-Carlton HS	High School		√				
Rosebud									
	Colstrip Public Schools	Pine Butte Elementary Sch	Elementary		√				
Sanders									
	Plains Public Schools	Plains 7-8	Middle				√*		
		Plains High School	High School				√*		
Silver Bow									
	Butte Public Schools	Kennedy School	Elementary	√					
Stillwater									
	Reed Point Public Schools	Reed Point 7-8	Middle					√	
		Reed Point Elementary	Elementary					√	

2012-2013 School Year Summary

County	System	School	School Program	Library Non-Endorsed (*Same teacher)	Library FTE	Library-No Services	Counselor Non-Endorsed (*Same teacher)	Counselor FTE	Counselor-No Services
Teton									
	Power Public Schools	Power 7-8	Middle	√*					
		Power High School	High School	√*					
		Power School	Elementary	√*					
Toole									
	Sunburst K-12 Schools	Hillside Colony School	Elementary				√*		
		Rimrock Colony School	Elementary				√*		
		Sunburst Elementary	Elementary				√*		
		Sunburst Middle School	Middle				√*		
Valley									
	Glasgow K-12 Schools	Glasgow 7-8	Middle				√*		
		R L Irle School	Elementary				√*		
	Opheim K-12 Schools	Opheim 7-8	Middle				√*		
		Opheim High School	High School				√*		
		Opheim School	Elementary				√*		
Yellowstone									
	Billings Public Schools	Arrowhead School	Elementary					√	
		Beartooth School	Elementary		√			√	
		Boulder School	Elementary					√	
		Burlington School	Elementary					√	
		Castle Rock 7-8	Middle		√				
		Eagle Cliffs Elementary	Elementary					√	
		Highland School	Elementary					√	
		Newman School	Elementary		√				
		Poly Drive School	Elementary					√	
		Riverside 7-8	Middle		√				
		Rose Park School	Elementary		√			√	
		Sandstone School	Elementary					√	
	Independent Elementary	Independent School	Elementary					√	
	Shepherd Public Schools	Shepherd 7-8	Middle	√*	√				
		Shepherd High School	High School	√*	√				
Nonpublic									
	North Cheyenne Trib Schools	Northern Cheyenne Trib El	Elementary		√				
State-funded									
	Mont Sch for Deaf & Blind	MT Sch For Deaf & Blnd El	Elementary						√
		MT Sch For Deaf & Blnd HS	High School						√
Grand Total				27	19	6	15	18	11

MISASSIGNMENT SUMMARY

2012-2013 Misassignment Summary

County	System	School	Content Area
Beaverhead	Lima K-12 Schools	Lima 7-8	Arts
		Lima High School	Arts
Big Horn	Lodge Grass Public Schls	Lodge Grass School	Special Education
	North Cheyenne Trib Schools	Northern Cheyenne Trib HS	Natural Science
Carbon	Bridger K-12 Schools	Bridger High School	Mathematics
	Joliet Public Schools	Joliet High School	Business
Cascade	Centerville Public Schls	Centerville 7-8	Industrial/Technology Education
		Centerville High School	Industrial/Technology Education
Chouteau	Big Sandy Public Schools	Big Sandy High School	Health Enhancement
			Natural Science
Custer	Miles City Public Schools	Washington 7-8	Natural Science
Fallon	Plevna K-12 Schools	Plevna High School	English
Fergus	Denton Public Schools	Denton High School	Arts
	Moore Public Schools	Moore High School	Natural Science
	Roy K-12 Schools	Roy High School	English
Flathead	Helena Flats Elementary	Helena Flats School	Title 1
	Kalispell Public Schools	Flathead High School	Natural Science
	West Valley Elementary	West Valley Middle School	English
			Social Science
Gallatin	Belgrade Public Schools	Belgrade Middle School	Health Enhancement
			Special Education
			Social Science
Glacier	Browning Public Schools	Browning Middle School	Special Education
Golden Valley	Lavina K-12 Schools	Lavina 7-8	Title 1
		Lavina High School	Title 1
		Lavina School	Title 1
Hill	Box Elder Public Schools	Box Elder 7-8	Special Education
		Box Elder High School	Special Education
Jefferson	Whitehall Public Schools	Whitehall 7-8	Family and Consumer Science
Lake	Charlo Public Schools	Charlo High School	Mathematics
	Polson Public Schools	Linderman School	Special Education
	Upper West Shore Elem	Dayton School	Special Education
	Valley View Elementary	Valley View School	Special Education
Lewis & Clark	Helena Public Schools	Helena High School	English
			Health Enhancement
			Social Science
	Lincoln K-12 Schools	Lincoln Elementary School	Title 1

2012-2013 Misassignment Summary

County	System	School	Content Area
Madison	Ennis K-12 Schools	Ennis 7-8	Mathematics
		Ennis High School	Mathematics
		Ennis School	Mathematics
	Harrison K-12 Schools	Harrison High School	Business
			Social Science
McCone	Circle Public Schools	Circle High School	Natural Science
Meagher	White Sul Spgs Pub Schls	White Sulphur Springs 7-8	Arts
		White Sulphur Springs El	Arts
		White Sulphur Springs HS	Arts
Missoula	Missoula Co Public Schls	Big Sky High School	Special Education
		Hellgate High School	English
Park	Livingston Public Schools	Park High School	English
			Special Education
		Shields Valley Pub Schls	Shields Valley High Schl
Petroleum	Winnett K-12 Schools	Winnett High School	Arts
Phillips	Saco Public Schools	Saco 7-8	Mathematics
Pondera	Conrad Public Schools	Conrad High School	Arts
			English
			Mathematics
			English
			Social Science
Powder River	Broadus Public Schools	Broadus 7-8	Natural Science
Ravalli	Darby K-12 Schools	Darby School	Elementary Education
	Lone Rock Elementary	Lone Rock 7-8	Social Science
	Stevensville Public Schls	Stevensville High School	Industrial/Technology Education
Richland	Fairview Public Schools	Fairview High School	Natural Science
	Savage Public Schools	Savage 7-8	World Languages
	Sidney Public Schools	Sidney Elementary	Special Education
Roosevelt	Culbertson Public Schools	Culbertson High School	World Languages
	Poplar Public Schools	Poplar High School	Natural Science
	Wolf Point Public Schools	Wolf Point High School	Natural Science

2012-2013 Misassignment Summary

County	System	School	Content Area	
Rosebud	Ashland Elementary	Ashland School	Title 1	
	Lame Deer Public Schools	Lame Deer 7-8	English	
				Mathematics
	Rosebud Public Schools	Rosebud 7-8	Health Enhancement	
		Rosebud High School	Business	
Sanders	Thompson Falls Pub Schls	Thompson Falls High Schl	Industrial/Technology Education	
Stillwater	Reed Point Public Schools	Reed Point High School	Business	
Teton	Choteau Public Schools	Choteau High School	English	
			Family and Consumer Science	
			Mathematics	
	Fairfield Public Schools	Fairfield High School	Natural Science	
Toole	Sunburst K-12 Schools	Sunburst High School	English	
			Natural Science	
Treasure	Hysham K-12 Schools	Hysham High School	Health Enhancement	
Valley	Lustre Elementary	Lustre School	Elementary Education	
Wheatland	Harlowton Public Schools	Harlowton High School	Business	
			Family and Consumer Science	
			Natural Science	
			World Languages	
			Hillcrest 7-8	World Languages
			Judith Gap Public Schools	Judith Gap 7-8
		Judith Gap High School	Business	
	Judith Gap School	Business		
Wibaux	Wibaux K-12 Schools	Wibaux High School	Mathematics	
Yellowstone	Billings Public Schools	Billings West High School	Natural Science	
		Skyview High School	World Languages	
State-funded	Dept of Corrections-Youth	Riverside Youth Corr Facil El	Natural Science	
		Riverside Youth Corr Facil HS	Natural Science	
	Mont Sch for Deaf & Blind	MT Sch For Deaf & Blind El	Special Education	
		MT Sch For Deaf & Blind HS	Special Education	

NON-LICENSED TEACHER SUMMARY

2012-2013 Nonlicensed Summary

County	System	School	Grade Type	Content Area	Presently Licensed
Carbon	Luther Elementary	Luther School	Elementary	World Languages	No
Chouteau	Geraldine Public Schools	Geraldine 7-8	Middle	Industrial/Technology Education	No
		Geraldine High School	High School	Agriculture	No
Gallatin	Bozeman Public Schools	Hyalite Elementary	Elementary	Health Enhancement	No
Judith Basin	Geyser Public Schools	Geyser School	Elementary	Elementary Education	No
		Surprise Creek School	Elementary	Elementary Education	No
Madison	Sheridan Public Schools	Sheridan Elementary Schl	Elementary	Elementary Education	Yes
Mineral	Superior K-12 Schools	Superior 7-8	Middle	World Languages	No
		Superior High School	High School	World Languages	No
Park	Gardiner Public Schools	Gardiner 7-8	Middle	Industrial/Technology Education	No
		Gardiner High School	High School	Industrial/Technology Education	No
	Livingston Public Schools	Park High School	High School	Other FTE	No
Pondera	Heart Butte K-12 Schools	Heart Butte 7-8	Middle	Other FTE	No
		Heart Butte Elementary	Elementary	Other FTE	No
		Heart Butte High School	High School	Other FTE	No
Roosevelt	Brockton Public Schools	Barbara Gilligan 7-8	Middle	Other FTE	Yes
		Barbara Gilligan School	Elementary	Other FTE	Yes
		Brockton High School	High School	World Languages	Yes
	Poplar Public Schools	Poplar High School	High School	English	Yes
Rosebud	Colstrip Public Schools	Frank Brattin Middle Schl	Middle	Librarian/Media Specialist	No
	Lame Deer Public Schools	Lame Deer School	Elementary	Special Education	No
Nonpublic	Manhattan Christian High	Manhattan Christian H S	High School	Arts	No
State-funded	Dept of Corrections-Youth	Riverside Youth Corr Facil El	Elementary	Health Enhancement	No
		Riverside Youth Corr Facil HS	High School	Industrial/Technology Education	No



opi.mt.gov